

Heading Home

Alan Walker
arr. by Jakob Gießibl

♩ = 108

mp

Measures 1-4 of the piano arrangement. The key signature has two flats (Bb and Eb) and the time signature is 4/4. The tempo is marked as 108 beats per minute. The music starts with a mezzo-piano (mp) dynamic. The right hand features a melody with eighth and quarter notes, while the left hand plays a steady eighth-note accompaniment.

5

Measures 5-7. The right hand continues the melody, and the left hand maintains the eighth-note accompaniment. A performance instruction is provided below the staff.

You can play the left hand's lower voice one octave higher if your hand isn't big enough

8

Measures 8-10. The musical progression continues with the same accompaniment pattern in the left hand and a developing melody in the right hand.

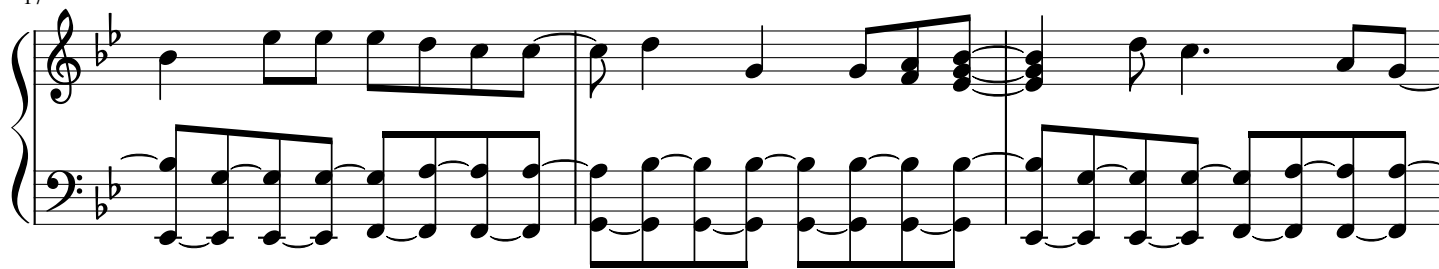
11

Measures 11-13. The right hand introduces some chords and rests, while the left hand continues its rhythmic accompaniment.

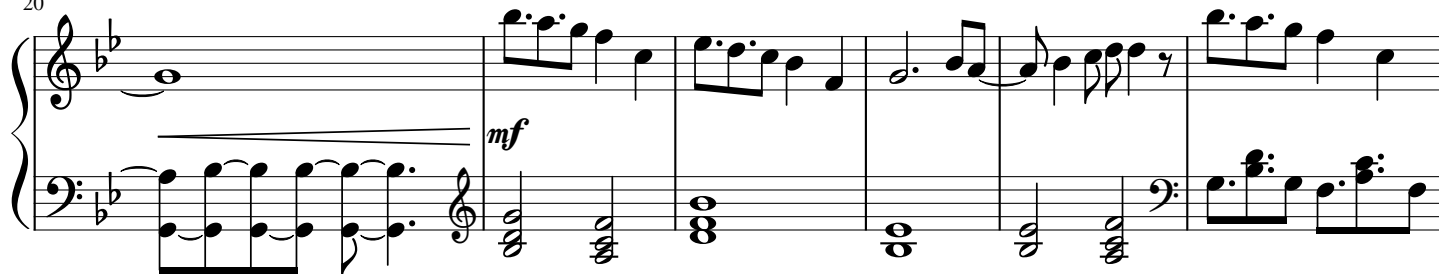
14

Measures 14-16. The final system on the page, showing the continuation of the melody and accompaniment.

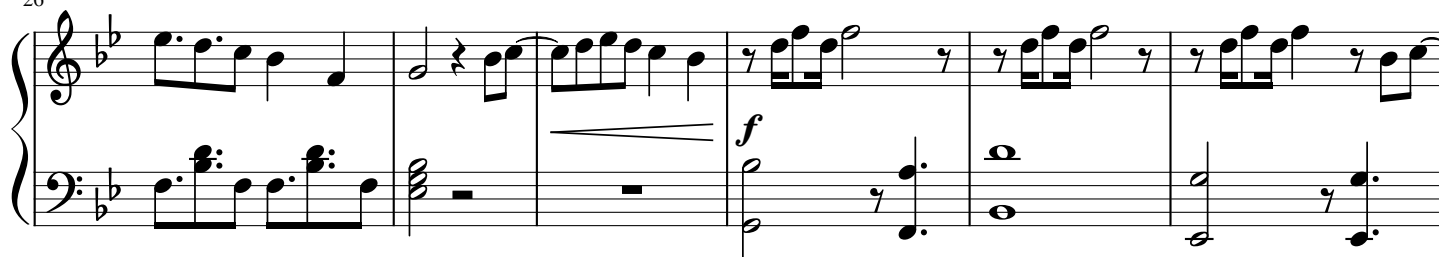
17



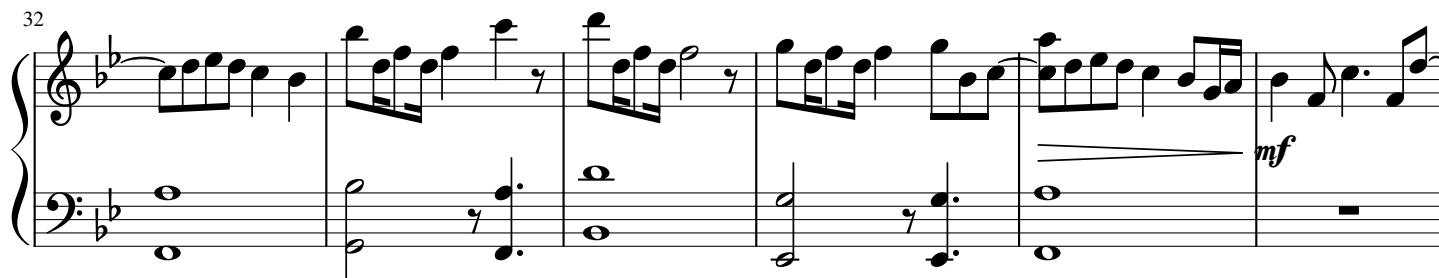
20



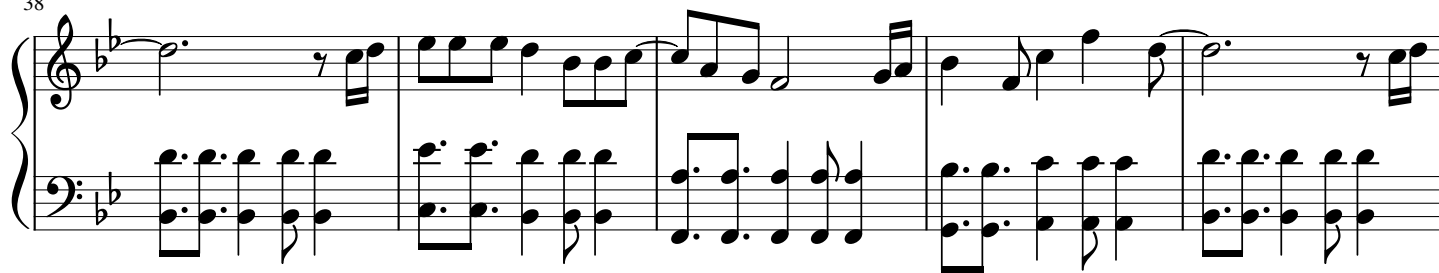
26

*Same here*

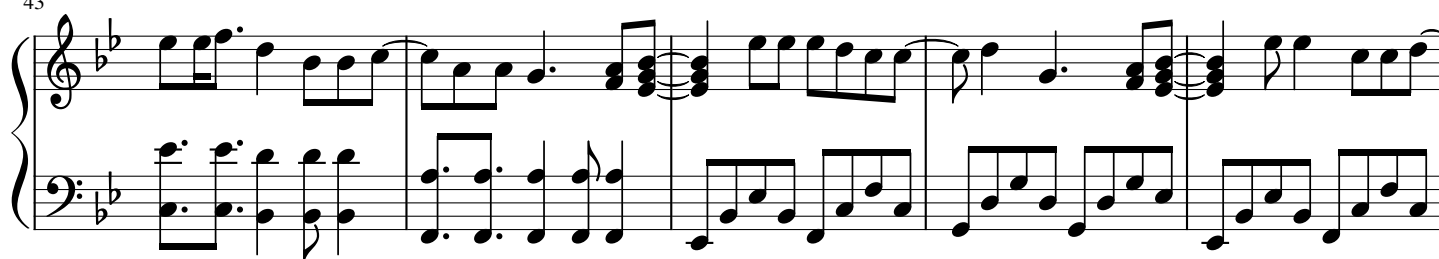
32



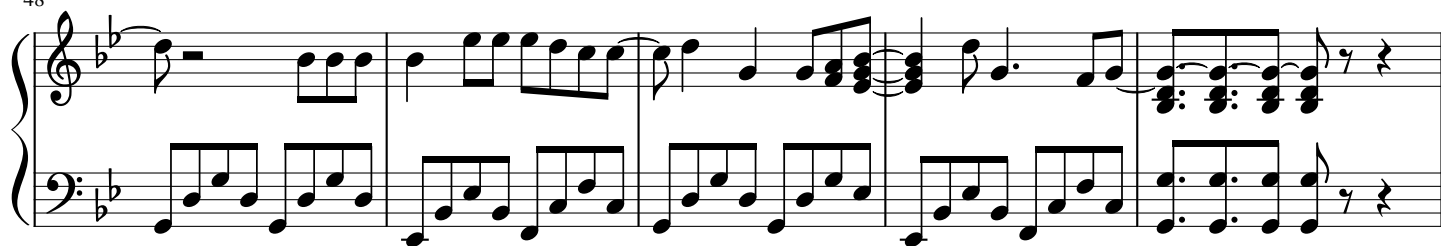
38



43



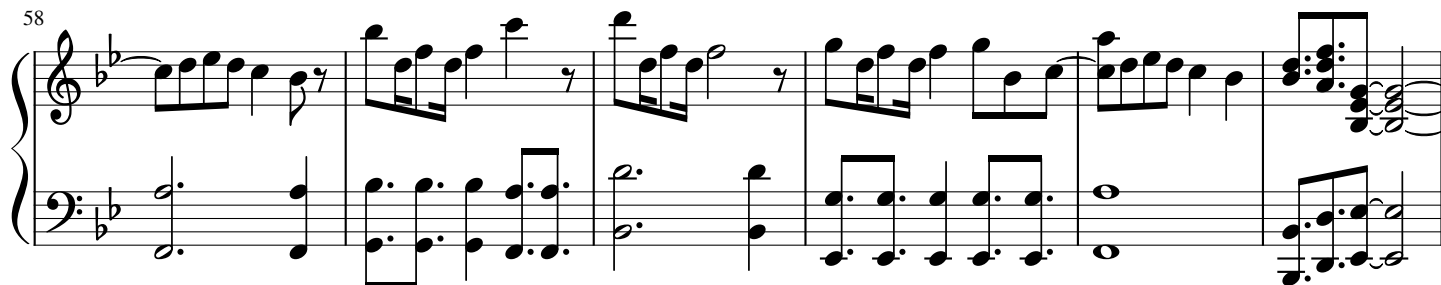
48



53



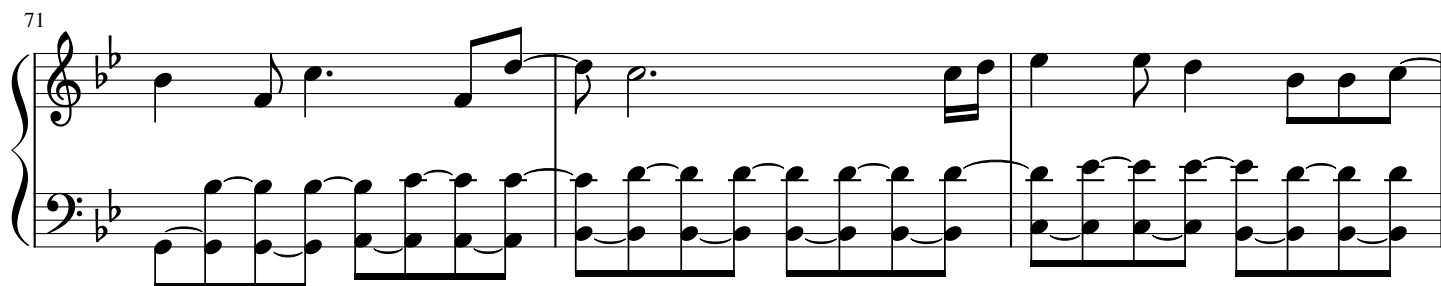
58



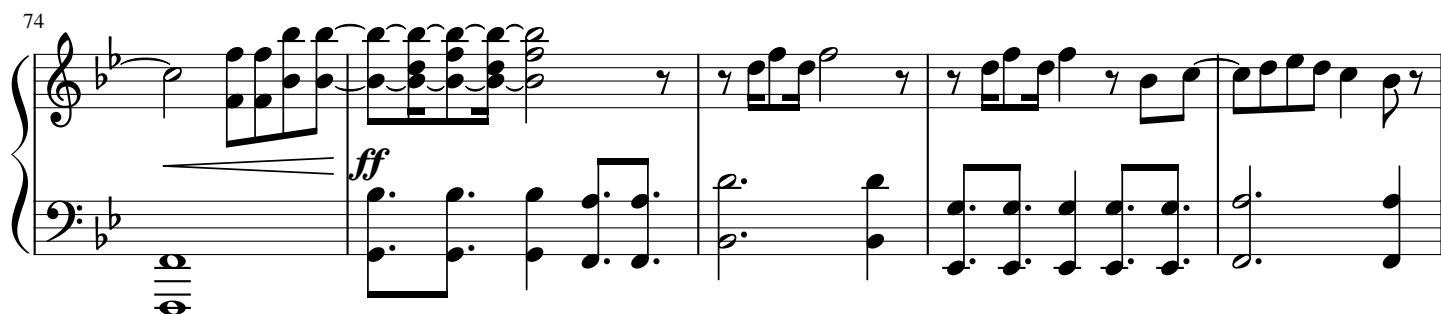
64



71



74



79

Measures 79-83 of a musical score in B-flat major. The right hand features a melodic line with eighth and sixteenth notes, including a triplet in measure 79 and a half note in measure 80. The left hand provides a harmonic accompaniment with eighth and sixteenth notes. A crescendo hairpin is present in measure 83, leading to a mezzo-piano (*mp*) dynamic marking in measure 84.

84

Measures 84-87 of the musical score. The right hand continues the melodic line with eighth notes and quarter notes, featuring a slur over measures 84-85 and a half note in measure 86. The left hand continues with a steady accompaniment of eighth notes.

88

Measures 88-91 of the musical score. The right hand continues the melodic line, ending with a half note in measure 91. The left hand continues with eighth notes, ending with a half note in measure 91. The piece concludes with a double bar line.