

Я ВЕРНУСЬ

♩ = 140

Piano score for the piece "Я ВЕРНУСЬ" (I Will Return). The score is written for piano (p) and consists of five systems of music, each with a grand staff (treble and bass clef). The tempo is marked as ♩ = 140. The key signature is one flat (B-flat). The score includes measure numbers 5, 10, 15, 20, 26, and 32. The music features a variety of chords, including triads and dyads, and includes some complex passages with rapid sixteenth-note runs in the right hand. The piece concludes with a final chord in the right hand.

5

10

15

20

26

32

37

Measures 37-41 of a piano score. The key signature has one flat (B-flat). The time signature is 3/4. The music features a complex texture with many beamed sixteenth and thirty-second notes, often with grace notes. The right hand has a more active melodic line, while the left hand provides a harmonic and rhythmic foundation with sustained notes and some movement.

42

Measures 42-46 of a piano score. The key signature has one flat (B-flat). The time signature is 3/4. The texture continues with intricate sixteenth-note patterns in the right hand and sustained, sometimes moving, notes in the left hand. The overall feel is one of delicate complexity.

47

Measures 47-51 of a piano score. The key signature changes to two flats (B-flat and E-flat). The time signature is 3/4. The right hand features more prominent sixteenth-note runs, and the left hand has some longer, sustained notes, creating a rich harmonic texture.

52

Measures 52-57 of a piano score. The key signature has two flats (B-flat and E-flat). The time signature is 3/4. The music shows a continuation of the intricate sixteenth-note patterns in the right hand, with the left hand providing a steady harmonic accompaniment.

58

Measures 58-63 of a piano score. The key signature has two flats (B-flat and E-flat). The time signature is 3/4. The texture remains complex, with rapid sixteenth-note passages in the right hand and sustained notes in the left hand.

64

Measures 64-68 of a piano score. The key signature changes to three flats (B-flat, E-flat, and A-flat). The time signature is 3/4. The final measures of this system show continued sixteenth-note activity in the right hand and a more active, moving line in the left hand.

70



76



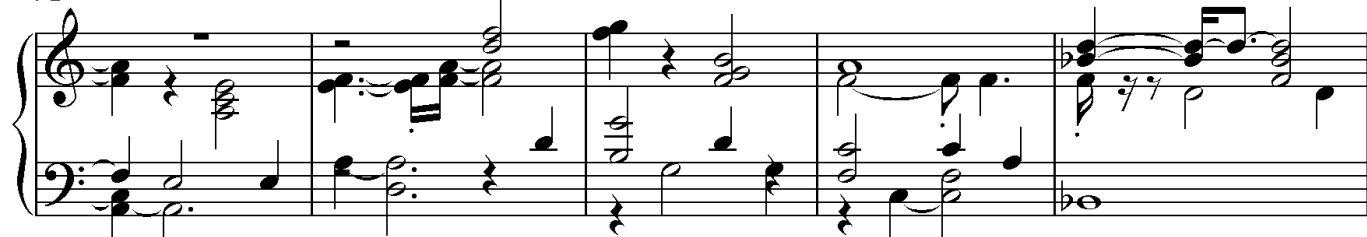
82



87



92



97



102

Measures 102-107: The right hand features a melodic line with eighth and sixteenth notes, while the left hand provides a harmonic accompaniment with chords and single notes. Measure 107 ends with a double bar line.

108

Measures 108-113: The right hand continues the melodic development with some rests, and the left hand maintains the accompaniment. Measure 113 ends with a double bar line.

114

Measures 114-118: The right hand has a more active melodic line with sixteenth notes, and the left hand continues the accompaniment. Measure 118 ends with a double bar line.

119

Measures 119-123: The right hand features a melodic line with some rests, and the left hand continues the accompaniment. Measure 123 ends with a double bar line.

124

Measures 124-128: The right hand has a melodic line with some rests, and the left hand continues the accompaniment. Measure 128 ends with a double bar line.

129

Measures 129-133: The right hand features a melodic line with some rests, and the left hand continues the accompaniment. Measure 133 ends with a double bar line.

134

Measures 134-138: The right hand features a melodic line with some rests, and the left hand continues the accompaniment. Measure 138 ends with a double bar line.