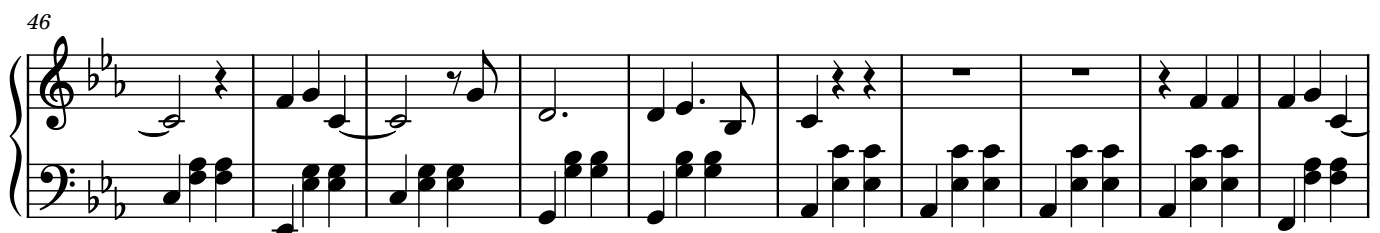
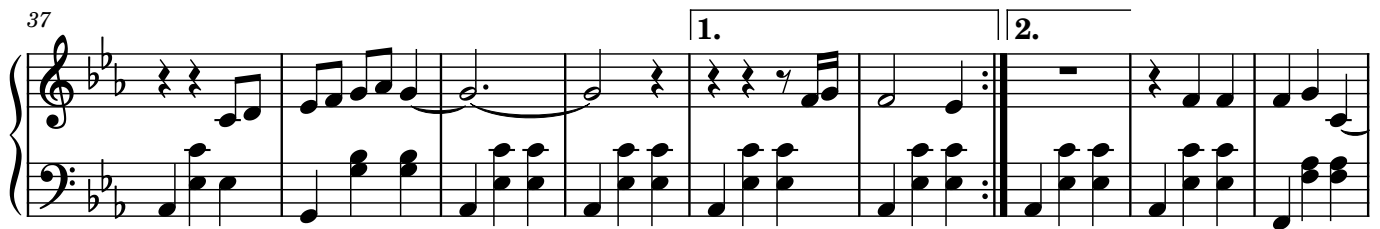
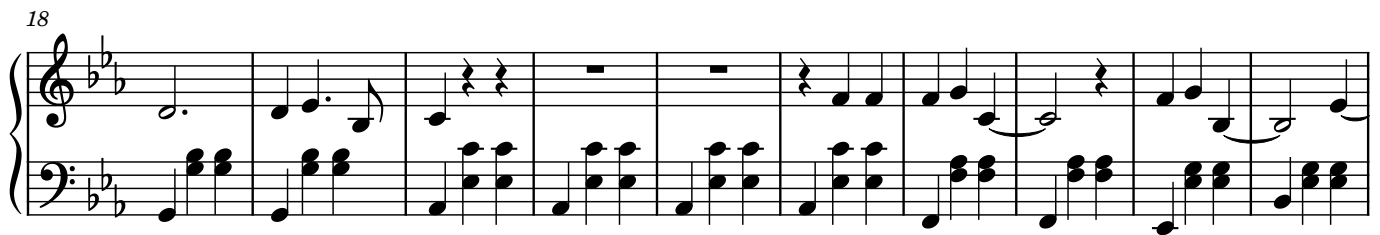
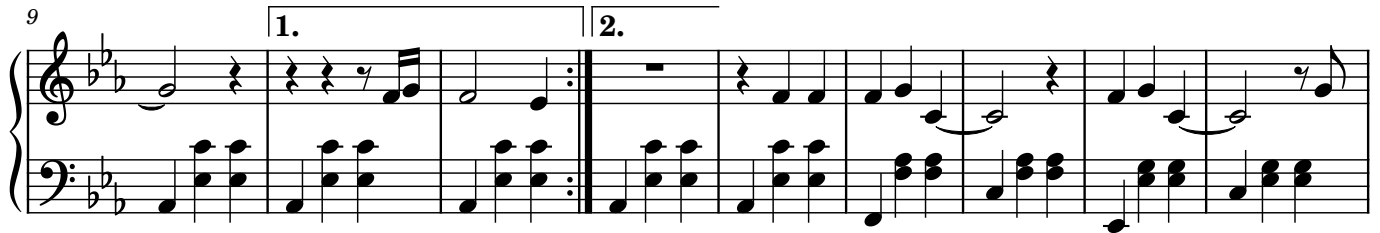
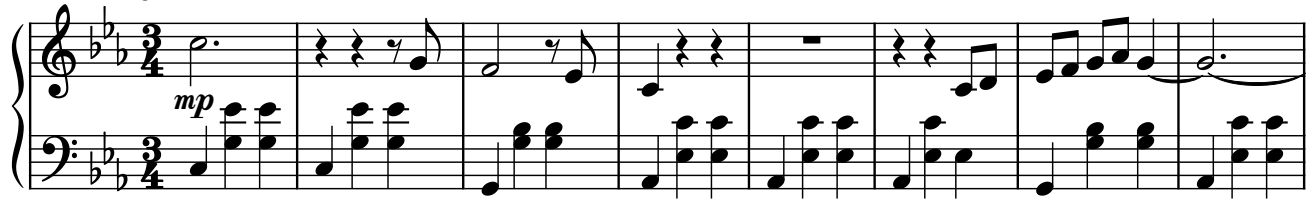


I Wanted To Leave

Bryan Fernel

$\text{♩} = 170$



56

Measures 56-64 of a musical score in B-flat major (two flats). The right hand features a melodic line with eighth and sixteenth notes, while the left hand provides a steady accompaniment of eighth-note chords. A repeat sign with first and second endings is present at the end of the system.

65

Measures 65-73. The right hand continues the melodic development with various note values and rests. The left hand maintains the accompaniment pattern. The system concludes with a first ending bracket.

74

Measures 74-83. This system begins with a second ending bracket. The right hand has more complex rhythmic patterns, including beamed sixteenth notes. The left hand continues with eighth-note chords.

84

Measures 84-93. The right hand features a series of eighth-note chords and some melodic fragments. The left hand continues the accompaniment. The system ends with a repeat sign.

94

Measures 94-102. The right hand has a more active melodic line with eighth and sixteenth notes. The left hand continues with the accompaniment. The system ends with a repeat sign.

103

Measures 103-111. The right hand features a melodic line with some rests and eighth notes. The left hand continues with the accompaniment. The system ends with a repeat sign.

112

Measures 112-119. The right hand has a melodic line with eighth and sixteenth notes. The left hand continues with the accompaniment. The system ends with a repeat sign and a final cadence.

121

1. 2.

130

140

150