

Blinding Lights

Переложение для фортепиано песни в исполнении The Weeknd

♩ = 168

Measures 1-7 of the piano arrangement. The key signature is B-flat major (two flats). The time signature is 4/4. The tempo is marked as quarter note = 168. The melody in the right hand consists of eighth and quarter notes, while the left hand provides a steady accompaniment of chords, some with ties.

8

Measures 8-15. The melody continues with eighth and quarter notes. The left hand accompaniment features a mix of chords and tied notes, maintaining the harmonic foundation.

16

Measures 16-22. The melody includes some half notes and eighth notes. The left hand continues with a consistent accompaniment pattern.

23

Measures 23-29. The melody features a mix of eighth and quarter notes. The left hand accompaniment remains consistent with the previous sections.

30

Measures 30-36. The final section of the provided notation, featuring a mix of eighth and quarter notes in the melody and consistent accompaniment in the left hand.

37

System 1 (Measures 37-43): Treble clef contains a melodic line with eighth and sixteenth notes. Bass clef contains a sustained chord with a slur over measures 37-43.

44

System 2 (Measures 44-49): Treble clef continues the melodic line. Bass clef contains a sustained chord with a slur over measures 44-49.

51

System 3 (Measures 51-56): Treble clef continues the melodic line. Bass clef contains a sustained chord with a slur over measures 51-56.

58

System 4 (Measures 58-63): Treble clef has a more active melodic line with eighth notes. Bass clef contains a sustained chord with a slur over measures 58-63.

65

System 5 (Measures 65-70): Treble clef continues the melodic line. Bass clef contains a sustained chord with a slur over measures 65-70.

72

Measures 72-78 of a musical score in B-flat major. The right hand features a melodic line with eighth and sixteenth notes, often beamed together. The left hand provides a harmonic accompaniment with chords and sustained notes, some marked with a fermata.

79

Measures 79-85 of the musical score. The right hand continues the melodic development with various note values and rests. The left hand maintains the harmonic support with sustained chords and moving lines.

86

Measures 86-91 of the musical score. The right hand shows more complex rhythmic patterns, including sixteenth-note runs. The left hand continues with sustained harmonic accompaniment.

92

Measures 92-98 of the musical score. The right hand features a series of sixteenth-note passages. The left hand provides a steady harmonic accompaniment with sustained notes and chords.

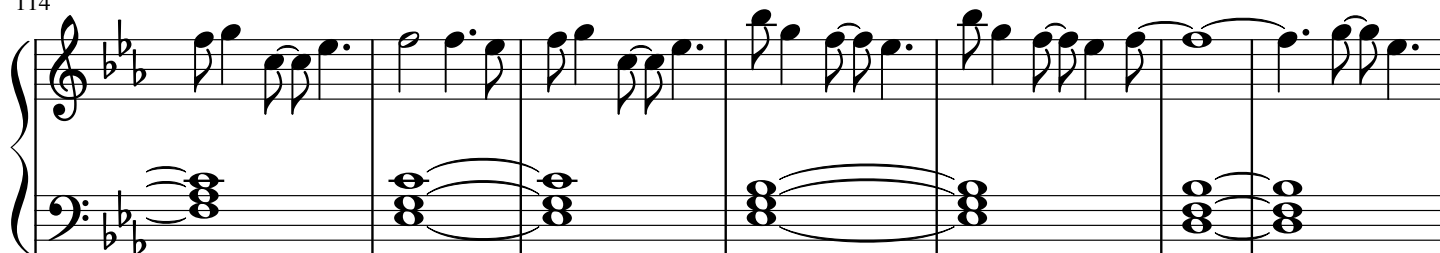
99

Measures 99-105 of the musical score. The right hand continues with melodic and rhythmic development. The left hand maintains the harmonic accompaniment with sustained chords and moving lines.

106



114



121

