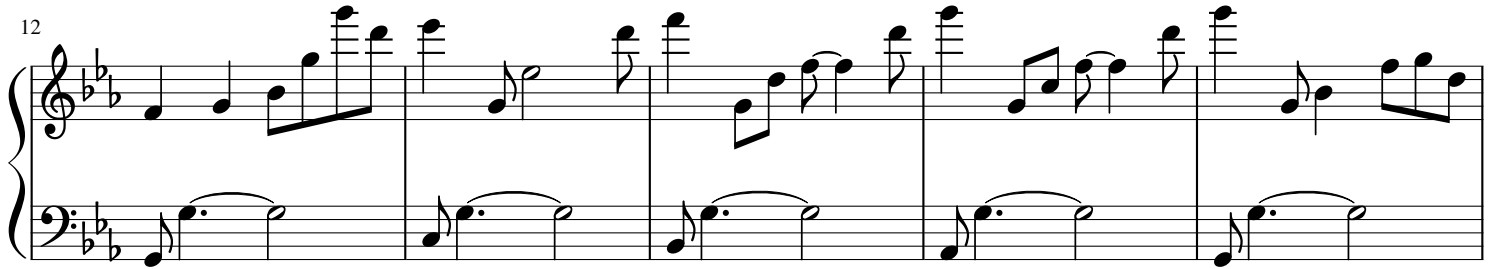
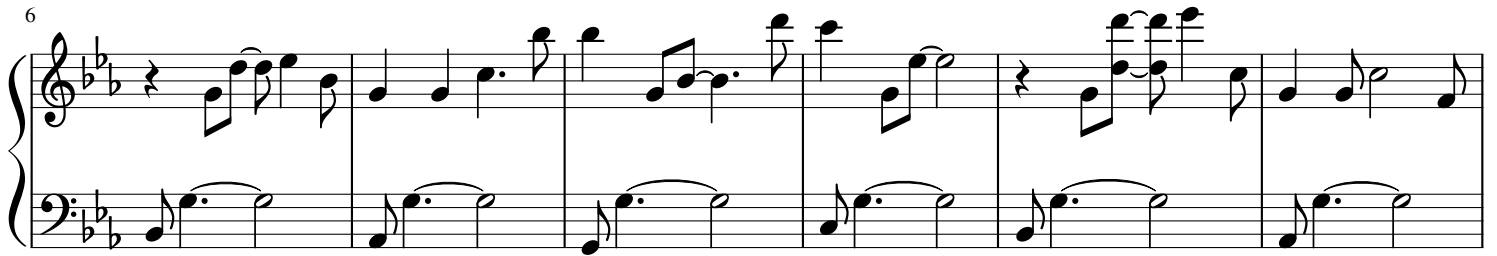
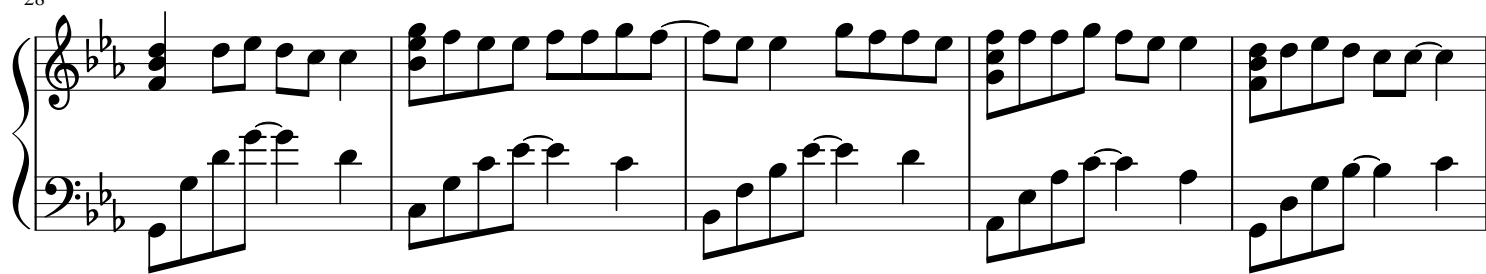


# Капкан

*Переложение для фортепиано песни в исполнении Мота*



28



33



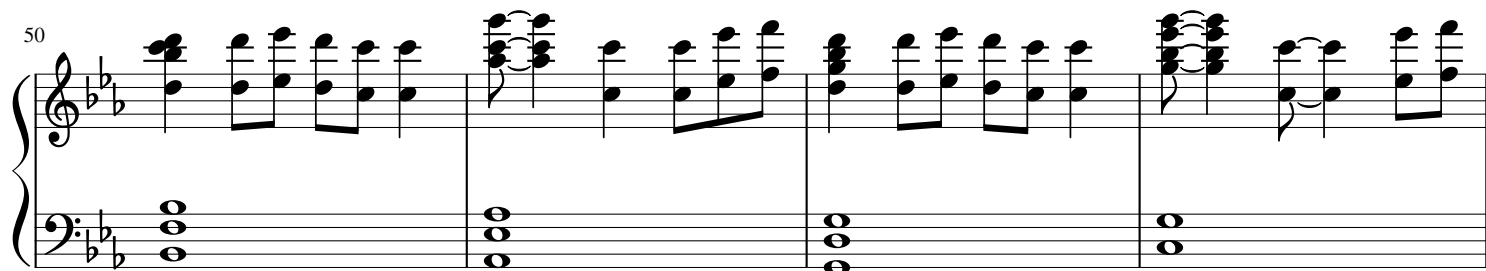
39



45



50



54

System 1 (Measures 54-57): Treble clef features a complex melody with many beamed eighth notes. Bass clef features a simple accompaniment of eighth notes.

58

System 2 (Measures 58-61): Treble clef continues the complex melody. Bass clef continues the simple accompaniment.

62

System 3 (Measures 62-65): Treble clef continues the complex melody. Bass clef continues the simple accompaniment.

66

System 4 (Measures 66-69): Treble clef has some rests and chords. Bass clef continues the simple accompaniment.

70

System 5 (Measures 70-73): Treble clef has rests and chords. Bass clef continues the simple accompaniment. The system ends with a double bar line and a fermata over a final chord.