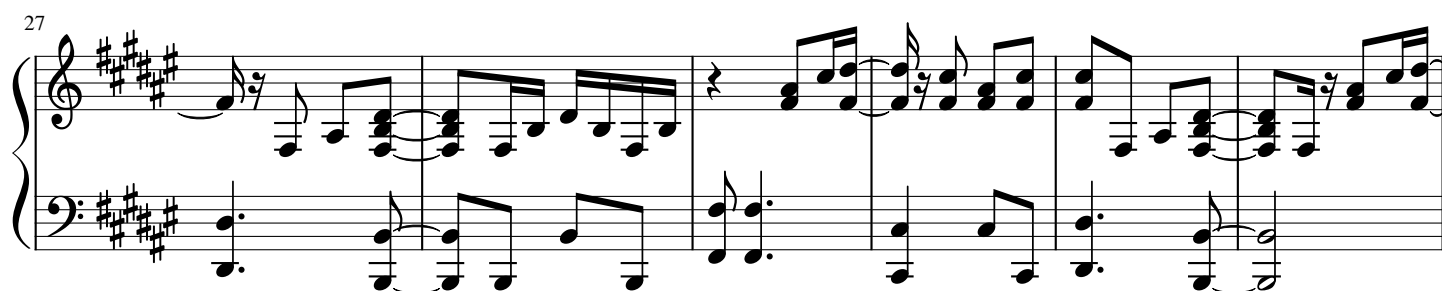


When I Come Around

Переложение для фортепиано песни группы Green Day



33

System 1 (measures 33-39) of a piano piece in E major (four sharps). The right hand features a melodic line with eighth and sixteenth notes, often beamed together. The left hand provides a steady accompaniment with eighth notes. Measure 34 includes a fermata over a chord in the right hand.

40

System 2 (measures 40-46). The right hand has a more active melodic line with frequent sixteenth-note runs. The left hand continues with eighth-note accompaniment. Measure 43 features a long, sustained chord in the right hand.

47

System 3 (measures 47-52). The right hand melody is characterized by rapid sixteenth-note passages. The left hand accompaniment remains consistent with eighth notes. Measure 50 shows a fermata over a chord in the right hand.

53

System 4 (measures 53-58). The right hand continues with intricate sixteenth-note patterns. The left hand accompaniment is steady. Measure 56 includes a fermata over a chord in the right hand.

59

System 5 (measures 59-64). The right hand melody features a mix of eighth and sixteenth notes. The left hand accompaniment consists of eighth notes. Measure 62 has a fermata over a chord in the right hand.

65

System 6 (measures 65-71). The right hand melody is active with sixteenth-note runs. The left hand accompaniment is steady eighth-note accompaniment. Measure 67 includes a fermata over a chord in the right hand.

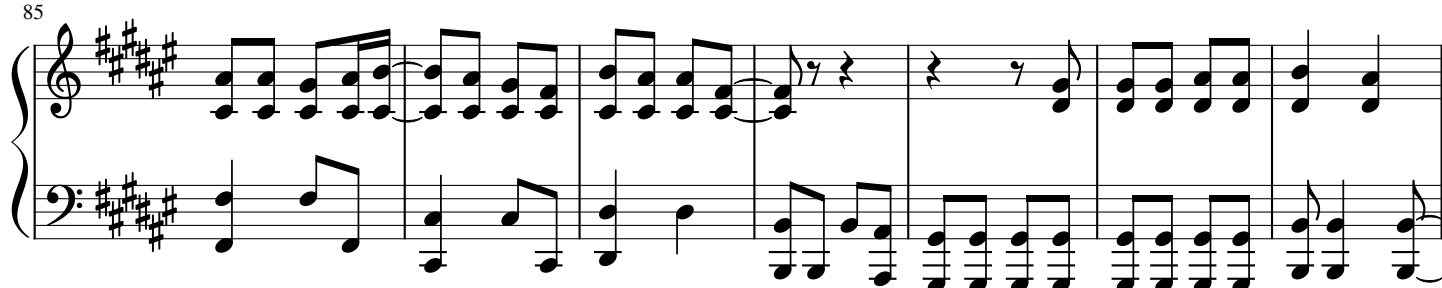
72



78



85



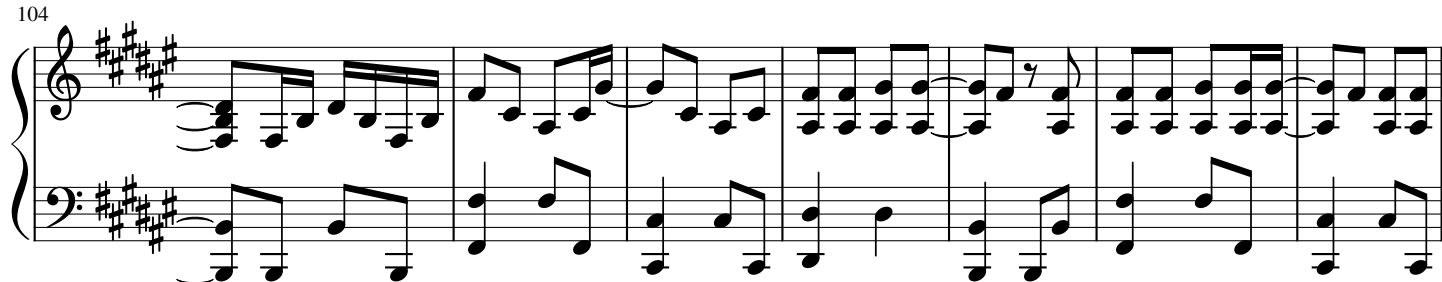
92



98



104



111

mus

This system contains measures 111 through 118. The key signature is three sharps (F#, C#, G#). The music features a complex texture with multiple sixteenth-note patterns in both the treble and bass staves. A 'mus' annotation with a line pointing to a specific note is present in measure 112. Measure 115 contains a whole note chord with a fermata.

119

This system contains measures 119 through 124. The key signature remains three sharps. The musical texture continues with intricate sixteenth-note passages and rests, maintaining a high level of rhythmic activity.

125

This system contains measures 125 through 131. The key signature is three sharps. The notation shows a continuation of the complex rhythmic patterns, with frequent sixteenth-note runs and rests in both staves.

132

This system contains measures 132 through 138. The key signature is three sharps. The music concludes this section with a final measure (138) featuring a double bar line. The texture remains dense with sixteenth-note figures.