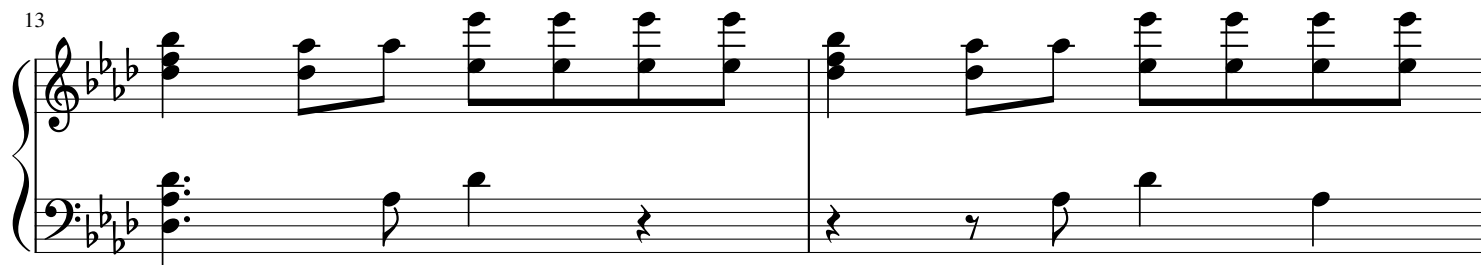
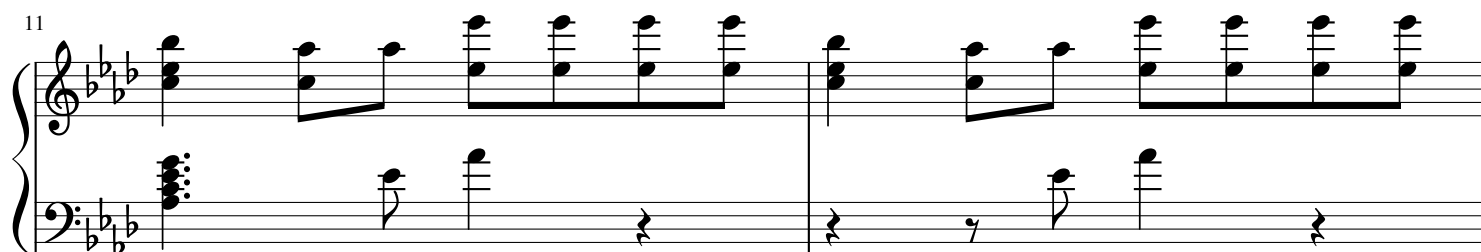
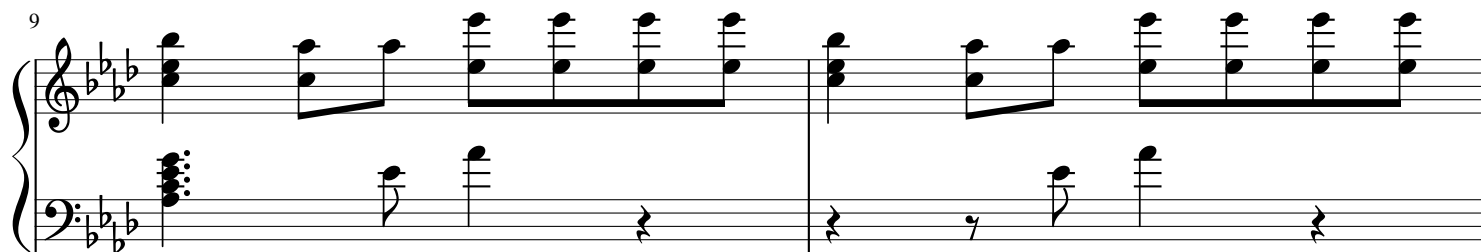
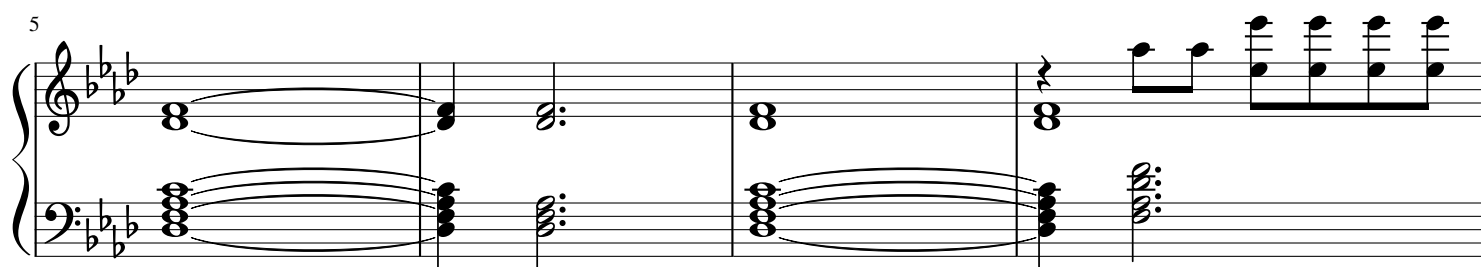
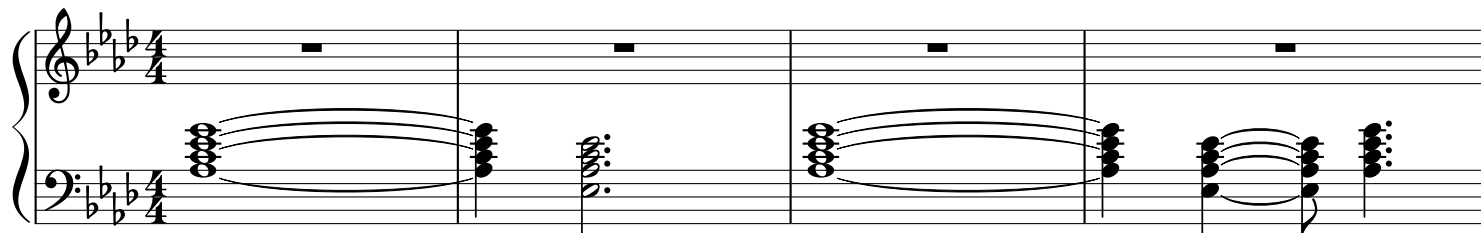


PSYCHO

Austin Post
The Theorist
Rodger Clutter

Post Malone

♩ = 140



15

Measures 15-16. Treble clef: F4, A4, C5 (chord). Bass clef: G3 (quarter), F3 (quarter), E3 (quarter), D3 (half).

17

Measures 17-18. Treble clef: F4, A4, C5 (chord). Bass clef: G3 (quarter), F3 (quarter), E3 (quarter), D3 (half).

19

Measures 19-20. Treble clef: F4, A4, C5 (chord). Bass clef: G3 (quarter), F3 (quarter), E3 (quarter), D3 (half).

21

Measures 21-22. Treble clef: F4, A4, C5 (chord). Bass clef: G3 (quarter), F3 (quarter), E3 (quarter), D3 (half).

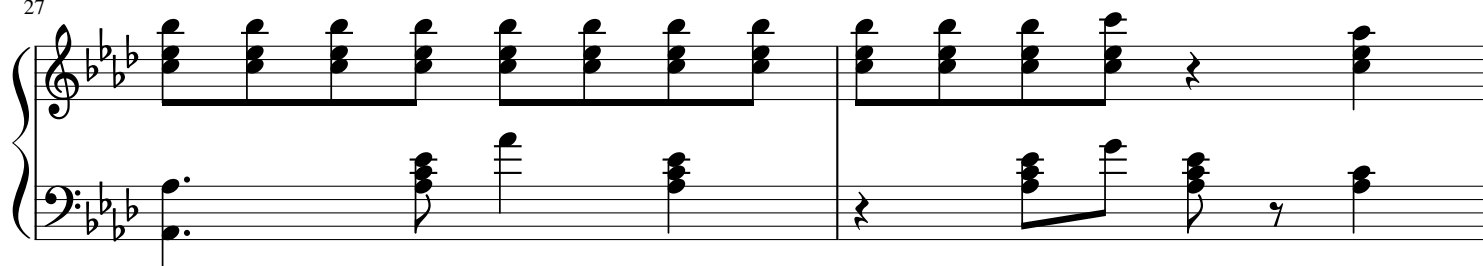
23

Measures 23-24. Treble clef: F4, A4, C5 (chord). Bass clef: G3 (quarter), F3 (quarter), E3 (quarter), D3 (half).

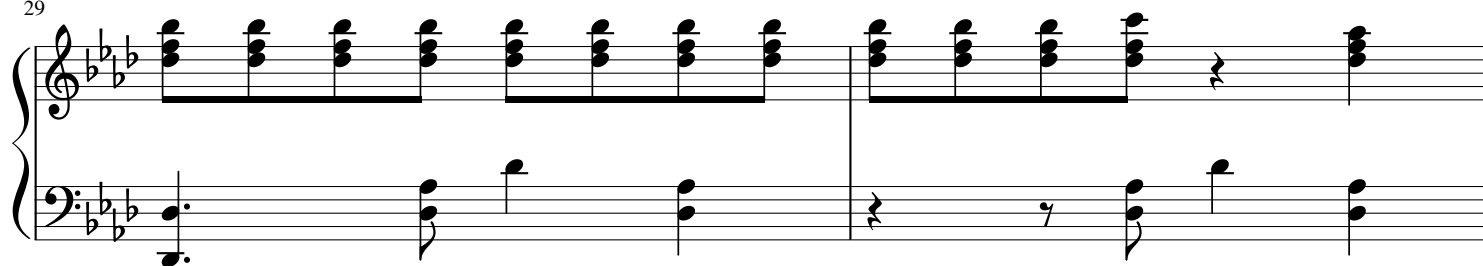
25



27



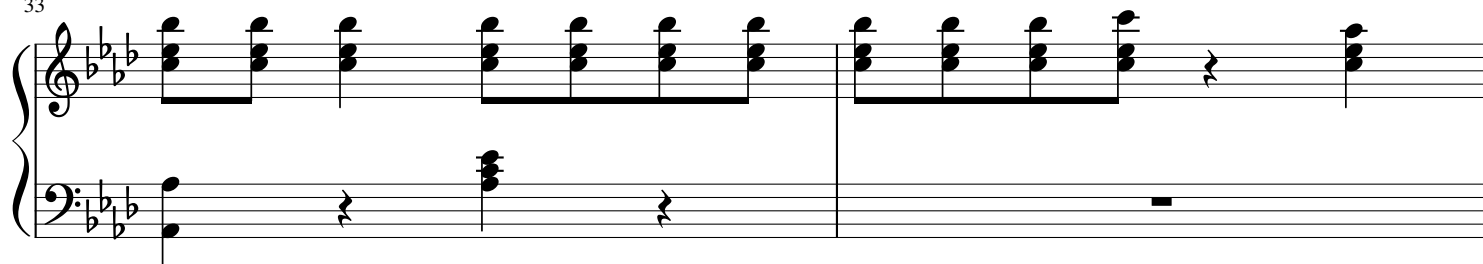
29



31



33



35

Measures 35-36 of a musical score in B-flat major (three flats). The right hand plays a series of chords (F major, C major, F major, C major, F major, C major, F major, C major) in a descending sequence. The left hand plays a single note (F) in measure 35, followed by a whole rest in measure 36.

37

Measures 37-38 of a musical score in B-flat major (three flats). The right hand continues the descending sequence of chords (F major, C major, F major, C major, F major, C major, F major, C major). The left hand plays a single note (F) in measure 37, followed by a whole rest in measure 38.

39

Measures 39-40 of a musical score in B-flat major (three flats). The right hand continues the descending sequence of chords (F major, C major, F major, C major, F major, C major, F major, C major). The left hand plays a single note (F) in measure 39, followed by a whole rest in measure 40.

41

Measures 41-42 of a musical score in B-flat major (three flats). The right hand plays a series of chords (F major, C major, F major, C major, F major, C major, F major, C major) in a descending sequence. The left hand plays a single note (F) in measure 41, followed by a whole rest in measure 42.

43

Measures 43-44 of a musical score in B-flat major (three flats). The right hand plays a series of chords (F major, C major, F major, C major, F major, C major, F major, C major) in a descending sequence. The left hand plays a single note (F) in measure 43, followed by a whole rest in measure 44.

45

Measures 45-46. Treble clef: whole note chord (F4, A4, C5). Bass clef: half note F3, half note G3, whole rest.

47

Measures 47-48. Treble clef: whole note chord (F4, A4, C5). Bass clef: whole rest.

49

Measures 49-50. Treble clef: whole note chord (F4, A4, C5). Bass clef: whole rest.

51

Measures 51-52. Treble clef: whole note chord (F4, A4, C5). Bass clef: whole rest.

53

Measures 53-54. Treble clef: whole note chord (F4, A4, C5). Bass clef: whole rest.

55

Measures 55-56 of a piano piece in B-flat major (three flats). The right hand features a steady eighth-note accompaniment. The left hand plays a series of chords and single notes, including a triplet of eighth notes in measure 56.

57

Measures 57-58. The musical texture continues with the eighth-note accompaniment in the right hand and chordal/linear patterns in the left hand.

59

Measures 59-60. The right hand maintains the eighth-note accompaniment. The left hand continues with its harmonic support.

61

Measures 61-62. The musical structure remains consistent with the previous measures.

63

Measures 63-64. The final system on the page, showing the continuation of the musical themes.

65

Measures 65-66 of a musical score in G major (one sharp). The right hand features a melody of eighth notes: G4, A4, B4, C5, D5, E5, F#5, G5, followed by a repeat of the first four notes. The left hand provides a bass line with chords and single notes: G2 (half), B2 (quarter), D3 (quarter), E3 (quarter), F#3 (quarter), G3 (half), and a repeat of the first four notes.

67

Measures 67-68 of a musical score in G major. The right hand continues the melody from measure 65. The left hand continues the bass line, with a repeat of the first four notes in measure 68.

69

Measures 69-70 of a musical score in G major. The right hand continues the melody. The left hand continues the bass line, with a repeat of the first four notes in measure 70.

71

Measures 71-72 of a musical score in G major. The right hand continues the melody. The left hand continues the bass line, with a repeat of the first four notes in measure 72.

73

Measures 73-74 of a musical score in G major. The right hand continues the melody. The left hand continues the bass line, with a repeat of the first four notes in measure 74.

75

Measures 75-76. Treble clef: Measure 75 has two chords (F4-A4 and Bb4-D5). Measure 76 has two chords (F4-A4 and Bb4-D5) followed by a half note (F4). Bass clef: Measure 75 has a half note (F3). Measure 76 has a half rest followed by a half note (F3).

77

Measures 77-78. Treble clef: Measure 77 has a half note (F4) followed by a half rest. Measure 78 has a half note (F4) followed by a half rest. Bass clef: Measure 77 has a half note (F3). Measure 78 has a half rest followed by a half note (F3).

79

Measures 79-80. Treble clef: Measure 79 has a half note (F4) followed by a half rest. Measure 80 has a half note (F4) followed by a half rest. Bass clef: Measure 79 has a half note (F3). Measure 80 has a half rest followed by a half note (F3).

81

Measures 81-82. Treble clef: Measure 81 has a half note (F4) followed by a half rest. Measure 82 has a half note (F4) followed by a half rest. Bass clef: Measure 81 has a half note (F3). Measure 82 has a half rest followed by a half note (F3).

83

Measures 83-84. Treble clef: Measure 83 has a half note (F4) followed by a half rest. Measure 84 has a half note (F4) followed by a half rest. Bass clef: Measure 83 has a half note (F3). Measure 84 has a half rest followed by a half note (F3).

85

Measures 85-86. The key signature has three flats (B-flat, E-flat, A-flat). Measure 85: Treble clef has a whole rest; Bass clef has a half note G2, a quarter rest, and a half note F2. Measure 86: Treble clef has a half note G4, a half note F4, a half note E4, and a half note D4; Bass clef has a half note G2, a half note F2, and a half note E2.

87

Measures 87-88. Measure 87: Treble clef has a half note G4, a half note F4, a half note E4, and a half note D4; Bass clef has a half note G2, a half note F2, and a half note E2. Measure 88: Treble clef has a half note G4, a half note F4, a half note E4, and a half note D4; Bass clef has a half note G2, a half note F2, and a half note E2.

89

Measures 89-90. Measure 89: Treble clef has a half note G4, a half note F4, a half note E4, and a half note D4; Bass clef has a half note G2, a half note F2, and a half note E2. Measure 90: Treble clef has a half note G4, a half note F4, a half note E4, and a half note D4; Bass clef has a half note G2, a half note F2, and a half note E2.

91

Measures 91-92. Measure 91: Treble clef has a half note G4, a half note F4, a half note E4, and a half note D4; Bass clef has a half note G2, a half note F2, and a half note E2. Measure 92: Treble clef has a half note G4, a half note F4, a half note E4, and a half note D4; Bass clef has a half note G2, a half note F2, and a half note E2.

93

Measures 93-94. Measure 93: Treble clef has a half note G4, a half note F4, a half note E4, and a half note D4; Bass clef has a half note G2, a half note F2, and a half note E2. Measure 94: Treble clef has a half note G4, a half note F4, a half note E4, and a half note D4; Bass clef has a half note G2, a half note F2, and a half note E2.

95

97

99

101

103

105

Measures 105-106. The music is in 3/4 time with a key signature of three flats (B-flat, E-flat, A-flat). The right hand features a steady eighth-note accompaniment of G4, A4, B-flat4, and C5. The left hand plays a descending eighth-note line: G3, F3, E3, D3, C3, B2, A2, G2, with rests in measures 105 and 106.

107

Measures 107-108. The right hand continues with the eighth-note accompaniment. The left hand plays a descending eighth-note line: F3, E3, D3, C3, B2, A2, G2, with rests in measures 107 and 108.

109

Measures 109-110. The right hand continues with the eighth-note accompaniment. The left hand plays a descending eighth-note line: E3, D3, C3, B2, A2, G2, with rests in measures 109 and 110.

111

Measures 111-112. The right hand continues with the eighth-note accompaniment. The left hand plays a descending eighth-note line: D3, C3, B2, A2, G2, with rests in measures 111 and 112.

113

Measures 113-114. The right hand continues with the eighth-note accompaniment. The left hand plays a descending eighth-note line: C3, B2, A2, G2, with rests in measures 113 and 114.

115

Measures 115 and 116 of a musical score in E-flat major (three flats). The treble clef staff features a series of chords and eighth notes, while the bass clef staff provides a harmonic accompaniment with eighth notes and rests.

117

Measures 117 and 118 of the musical score. The notation continues with similar chordal and melodic patterns in the treble and bass staves.

119

Measure 119 of the musical score, concluding with a double bar line. The treble clef staff has a half note chord, and the bass clef staff has a half note chord, both with a fermata.