

Tower Of Spirits

The Legend Of Zelda: Spirit Tracks

Koji Kondo

Trascribed By Bucktohven

Piano

Tempo=85

rit. -----

Tempo=127

6

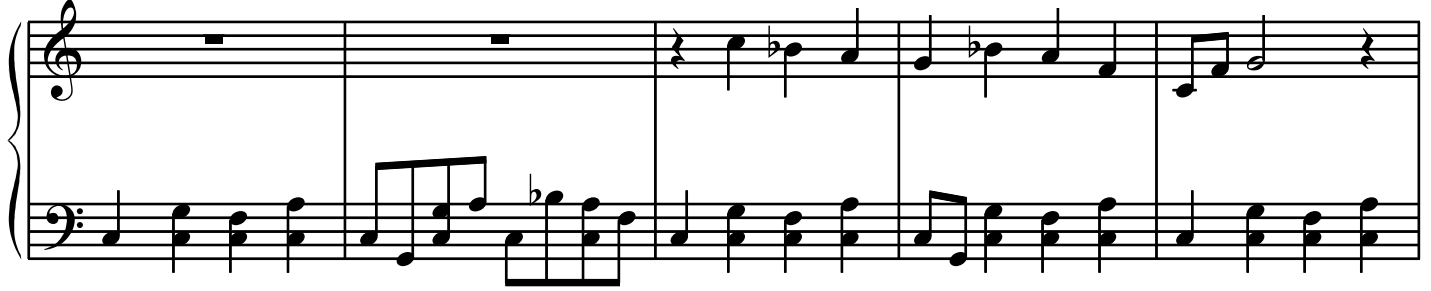
11

16

Tower Of Spirits

2

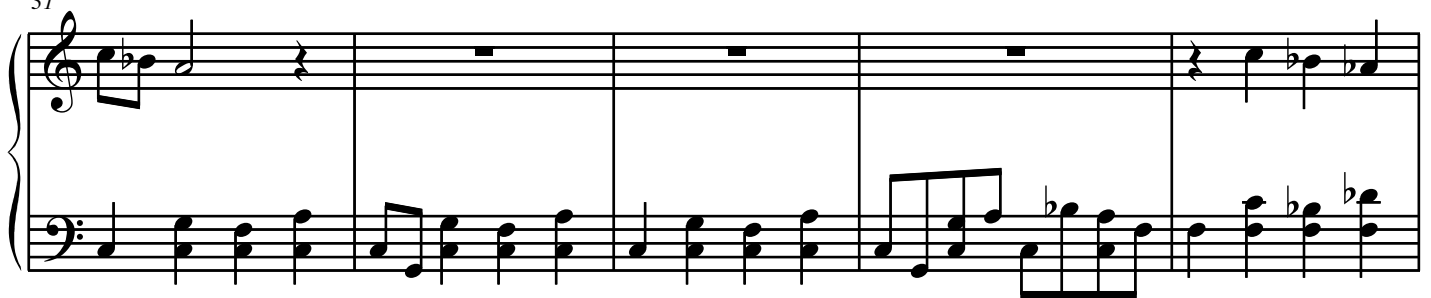
21



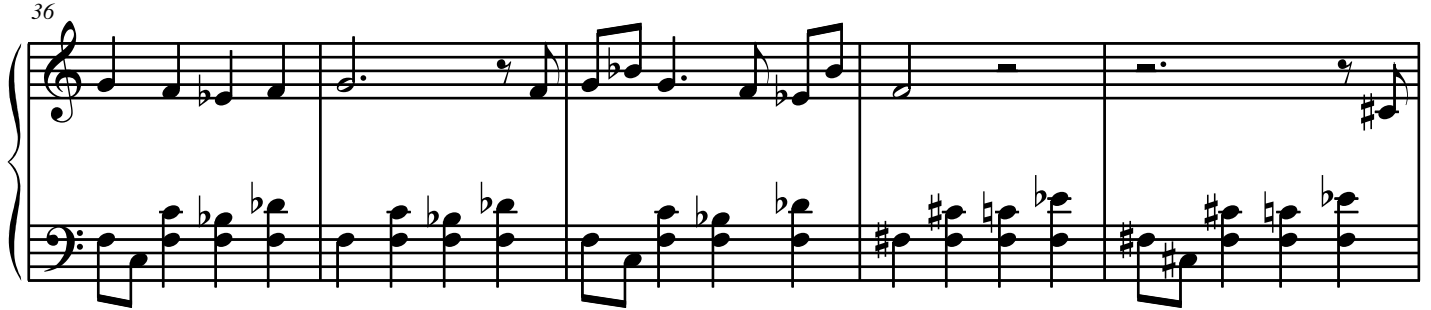
26



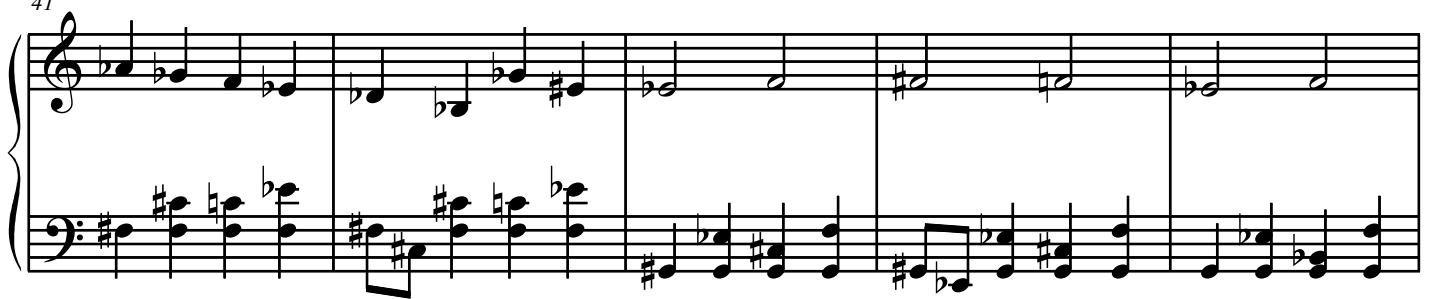
31



36



41



Tower Of Spirits

3

46

Musical score for "Tower Of Spirits" starting at measure 46. The score is in 2/4 time and features a treble and bass staff. The treble staff has a key signature of one flat (B-flat) and a common time signature. The bass staff has a key signature of one flat (B-flat) and a common time signature. The music consists of five measures. The first measure has a half note G4 in the treble and a half note G3 in the bass. The second measure has a half note A4 in the treble and a half note A3 in the bass. The third measure has a half note Bb4 in the treble and a half note Bb3 in the bass. The fourth measure has a half note C5 in the treble and a half note C4 in the bass. The fifth measure has a half note D5 in the treble and a half note D4 in the bass. The piece ends with a double bar line and repeat dots.