

[バイエル70番程度]

ナウシカ・レクイエム

Piano Arranged by Youshi Matsuyama

Slowly (おごそかに) ♩ = ca 69

久石 譲 作曲

The piano score for 'Nausicaä Requiem' is written for piano and includes the following details:

- Tempo:** Slowly (おごそかに) ♩ = ca 69
- Key Signature:** B-flat major (two flats)
- Time Signature:** 3/4
- Chords and Fingerings:**
 - Measure 1:** Chord Dm (F, A, C). Treble clef: 4 2 1. Bass clef: 4.
 - Measure 2:** Chord Am/C (A, C, E). Treble clef: 3 2 1. Bass clef: 1.
 - Measure 3:** Chord F (F, A, C). Treble clef: 4 2 1. Bass clef: 2.
 - Measure 4:** Chord C (C, E, G). Treble clef: 3 2 1. Bass clef: 1.
 - Measure 5:** Chord Dm (F, A, C). Treble clef: 4 2 1. Bass clef: 4.
 - Measure 6:** Chord Am/C (A, C, E). Treble clef: 3 2 1. Bass clef: 1.
 - Measure 7:** Chord F (F, A, C). Treble clef: 4 2 1. Bass clef: 2.
 - Measure 8:** Chord C (C, E, G). Treble clef: 3 2 1. Bass clef: 1.
 - Measure 9:** Chord Dm (F, A, C). Treble clef: 4 2 1. Bass clef: 4.
 - Measure 10:** Chord Am/C (A, C, E). Treble clef: 3 2 1. Bass clef: 1.
 - Measure 11:** Chord F (F, A, C). Treble clef: 4 2 1. Bass clef: 2.
 - Measure 12:** Chord Bb (Bb, D, F). Treble clef: 3 2 1. Bass clef: 1.
 - Measure 13:** Chord Am (A, C, E). Treble clef: 4 2 1. Bass clef: 4.
 - Measure 14:** Chord Dm (F, A, C). Treble clef: 3 2 1. Bass clef: 1.
 - Measure 15:** Chord Dm7 (F, A, C, Eb). Treble clef: 4 2 1. Bass clef: 4.
 - Measure 16:** Chord Bb (Bb, D, F). Treble clef: 3 2 1. Bass clef: 1.

E \flat

D7sus4

D7

Gm

Dm
FB \flat

F

Gm



Gm

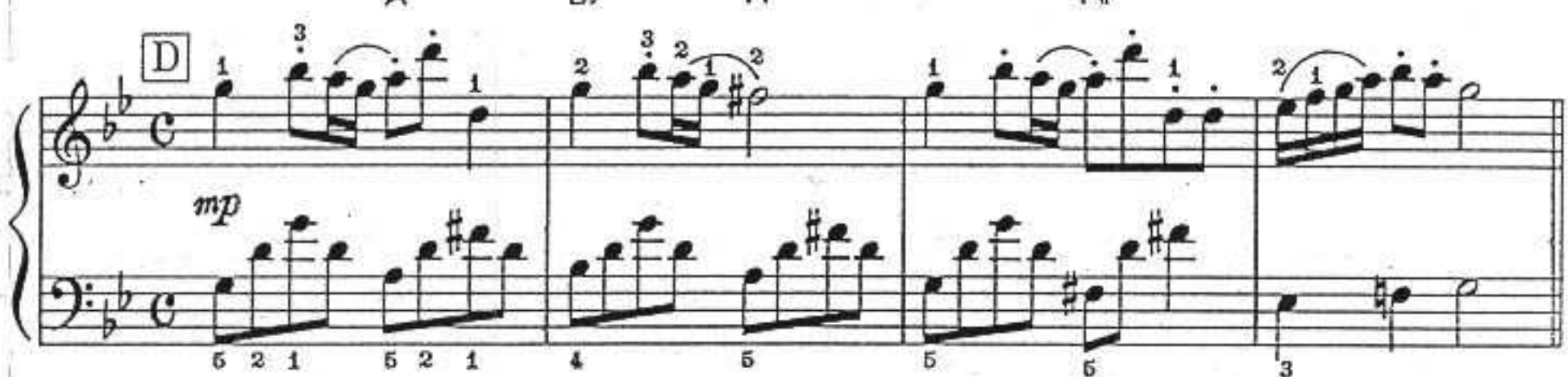
D7
AGm
B \flat D7
A

Gm

D7
F \sharp E \flat

F

Gm



E

Gm

D7
AGm
B \flat D7
A

Gm

D7
F \sharp 

Cm

C \sharp dim

D7

F

Gm

D7
AGm
B \flat D7
A

Gm $\frac{D7}{F\sharp}$ Eb F Gm Bb $\frac{F7}{A}$
 2 3 2 1 2 2
 la la lalala la la la lalalalala la la la la la la la la la la

F7 Bb Eb $\frac{C}{E}$ $\frac{Bb}{F}$
 3 3 3 1 2 1
 la la la la lalalalala la la la la la la la la

1. $\frac{D7}{F\sharp}$ 2. $\frac{D7}{F\sharp}$ H Gm $\frac{D7}{A}$
 4 4 1 1
 la la la la la la la la la la la la la la

Gm $\frac{D7}{A}$ Gm $\frac{D7}{F\sharp}$ Eb F Gm
 2 3 1 2 1 2 3 2 1 2
 la la la la la la la la la la la la lalalalala la la

I Gm $\frac{D7}{A}$ Gm $\frac{D7}{A}$ Gm $\frac{D7}{F\sharp}$ Gm
 1 2 3 1 2 1 2 5 1
 mp
 5 4 5 1 5