

Creep

Radiohead

From the album "Pablo Honey"

Radiohead

Albert Hammond

Mike Hazelwood

$\text{♩} = 92$

Measures 1-6 of the piano introduction. The key signature has one flat (B-flat). The time signature is 4/4. The melody in the right hand consists of eighth and quarter notes. The bass line in the left hand is composed of sustained chords, some with double sharps (F# and C#).

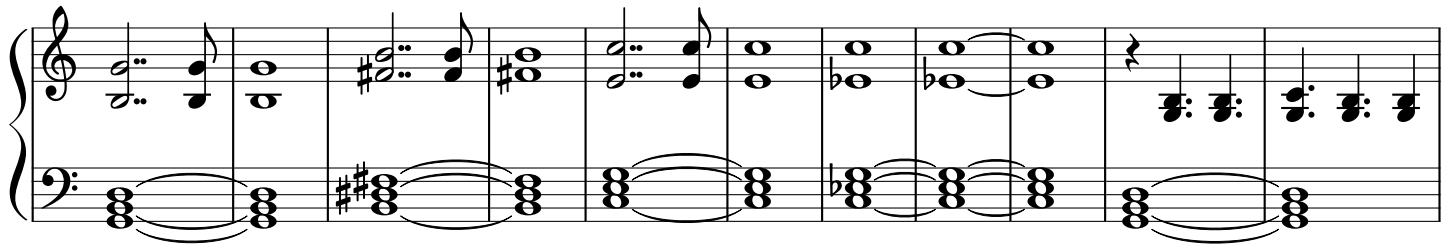
Measures 7-12. Measure 7 begins with a repeat sign. The melody continues with eighth notes. The bass line features sustained chords, including one with a double sharp (F#).

Measures 13-19. The melody continues with eighth notes and quarter notes. The bass line consists of sustained chords, some with double sharps (F# and C#).

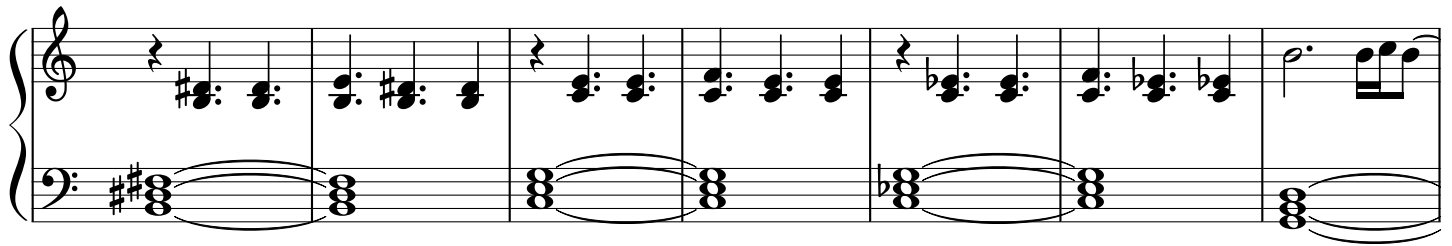
Measures 20-26. The melody continues with eighth notes and quarter notes. The bass line consists of sustained chords, some with double sharps (F# and C#).

Measures 27-32. The melody continues with eighth notes and quarter notes. The bass line consists of sustained chords, some with double sharps (F# and C#). The piece ends with a double bar line in measure 32.

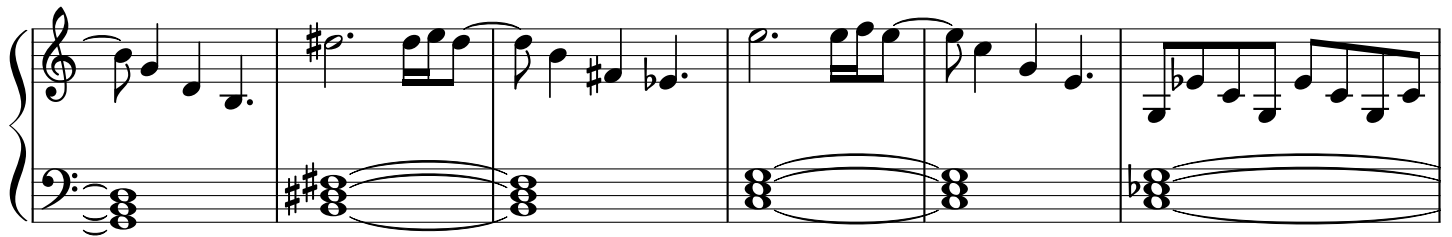
33



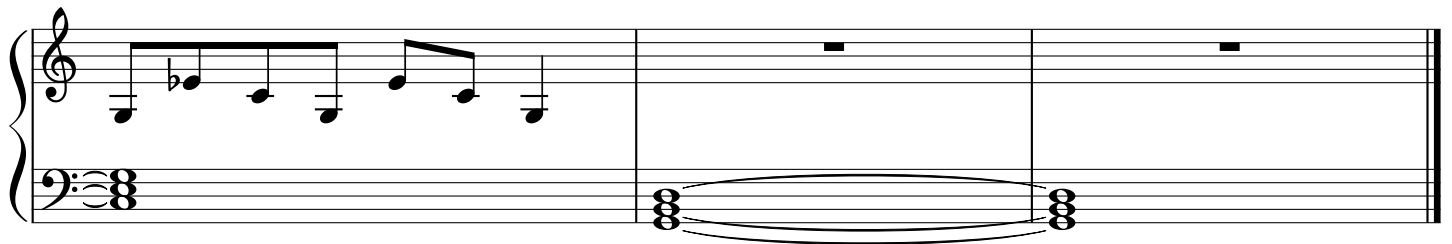
44



51



57



Vocals to be added later. Might make a different version with all the instruments as well. Please leave suggestions!
 -Friðrik Ágúst Egilsson