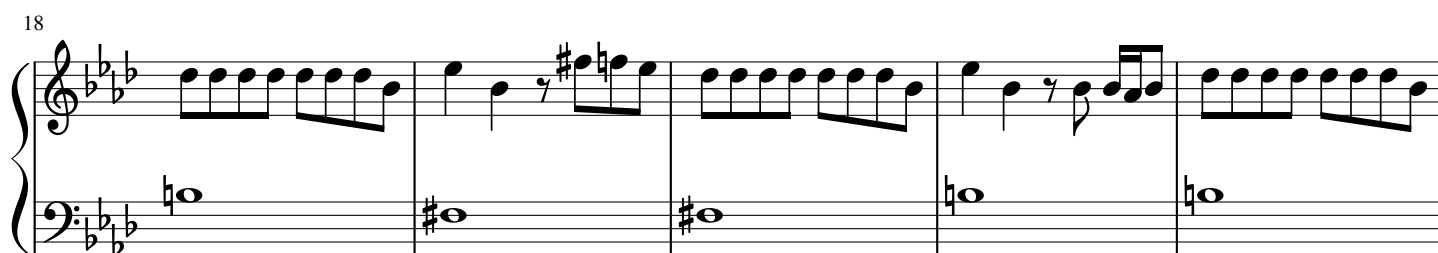
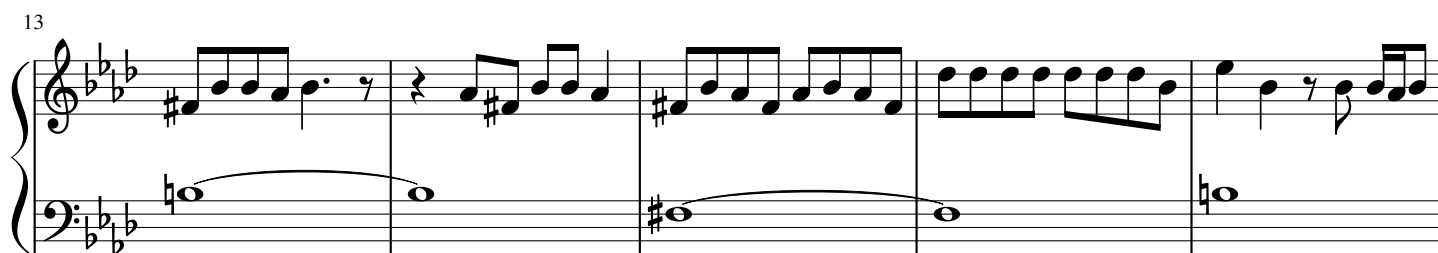


Piano

Congratulations

Post Malone

♩ = 100



27



31



35



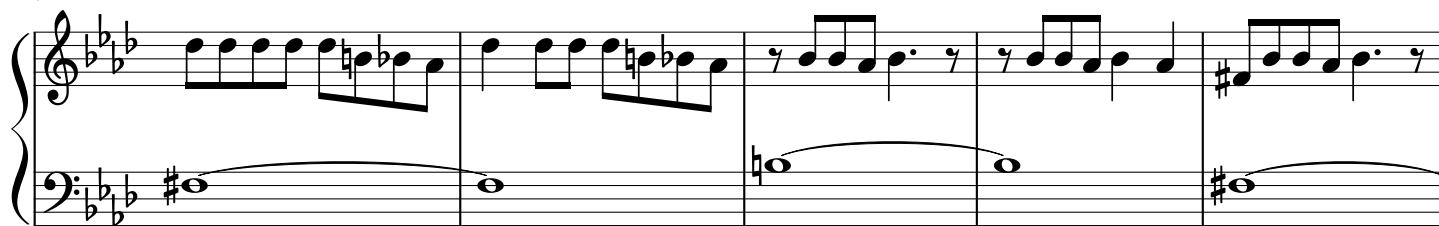
39



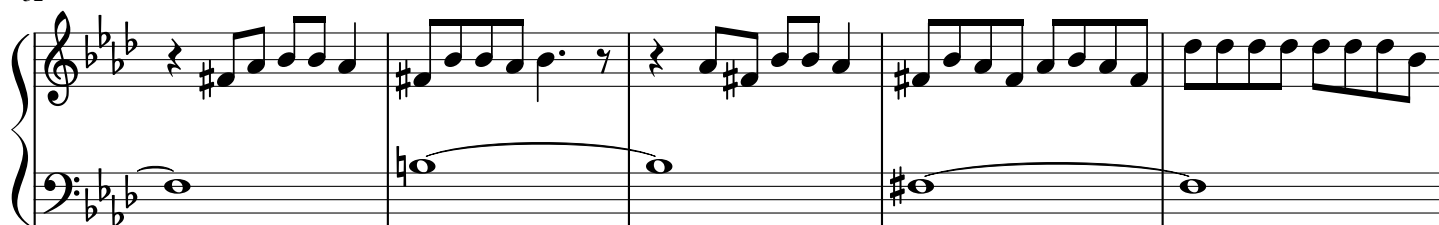
43



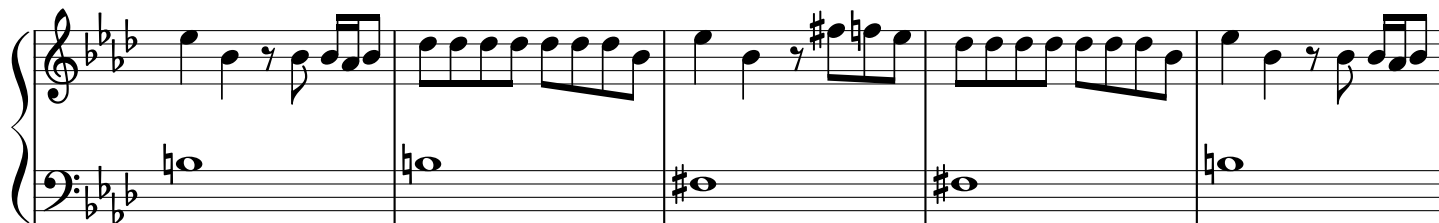
47



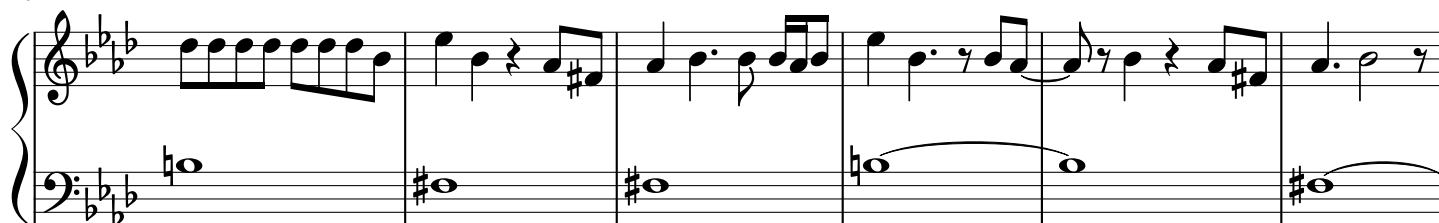
52



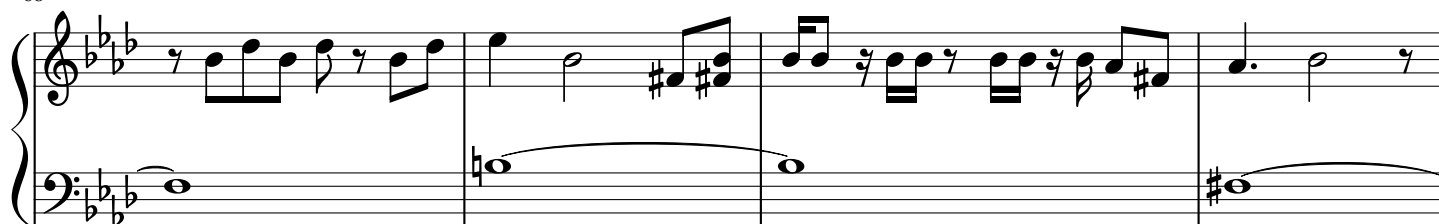
57



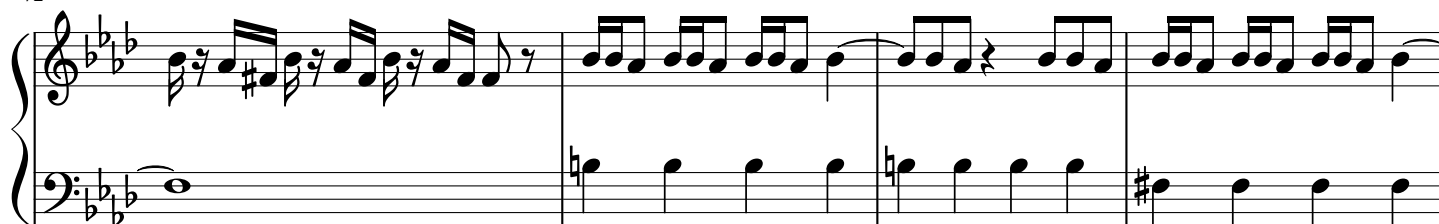
62



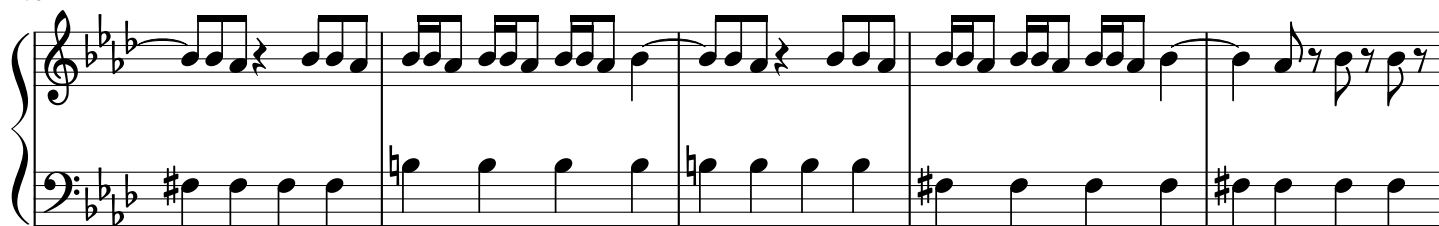
68



72



76



81

Measures 81-84 of a musical score. The key signature has three flats (B-flat, E-flat, A-flat). The melody in the right hand consists of eighth-note patterns and quarter notes. The bass line features long, sustained notes with ties across measures.

85

Measures 85-88 of a musical score. The key signature has three flats (B-flat, E-flat, A-flat). The melody in the right hand continues with eighth-note patterns and quarter notes. The bass line features long, sustained notes with ties across measures.

89

Measures 89-94 of a musical score. The key signature has three flats (B-flat, E-flat, A-flat). The melody in the right hand includes eighth-note patterns and quarter notes. The bass line features long, sustained notes with ties across measures.

95

Measures 95-99 of a musical score. The key signature has three flats (B-flat, E-flat, A-flat). The melody in the right hand includes eighth-note patterns and quarter notes. The bass line features long, sustained notes with ties across measures.

100

Measures 100-104 of a musical score. The key signature has three flats (B-flat, E-flat, A-flat). The melody in the right hand includes eighth-note patterns and quarter notes. The bass line features long, sustained notes with ties across measures.

105

Measures 105-110 of a musical score. The key signature has three flats (B-flat, E-flat, A-flat). The melody in the right hand includes eighth-note patterns and quarter notes. The bass line features long, sustained notes with ties across measures.

111

