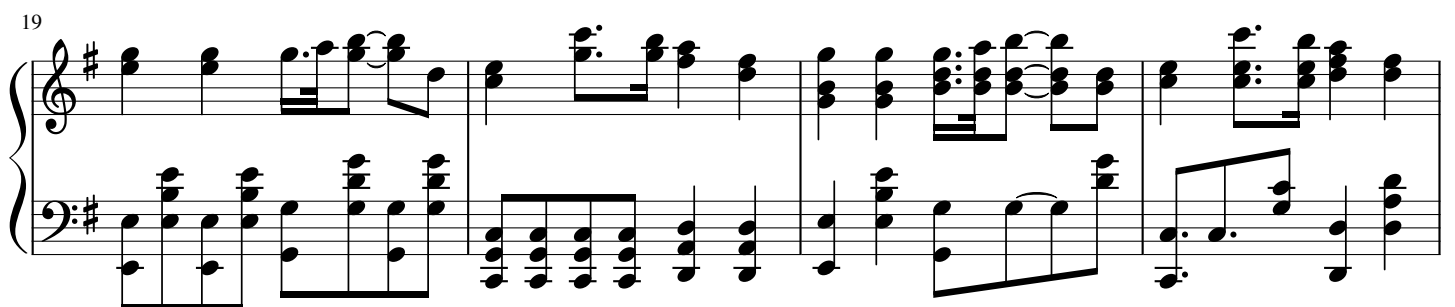
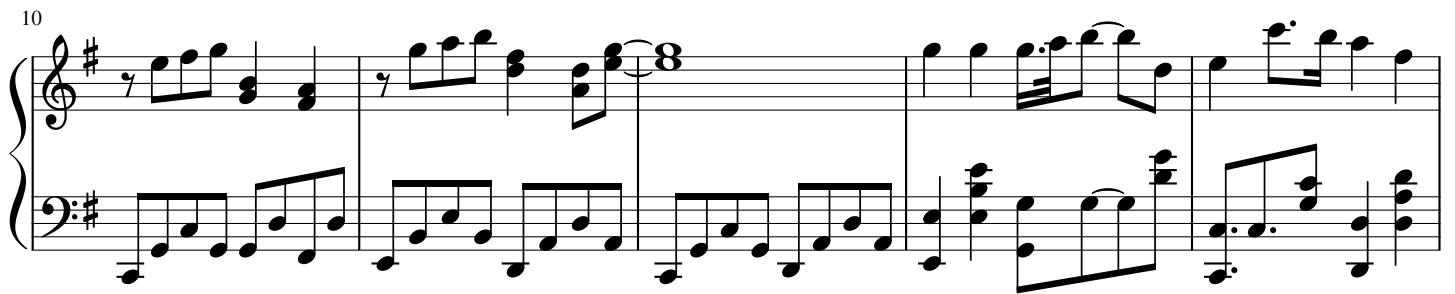
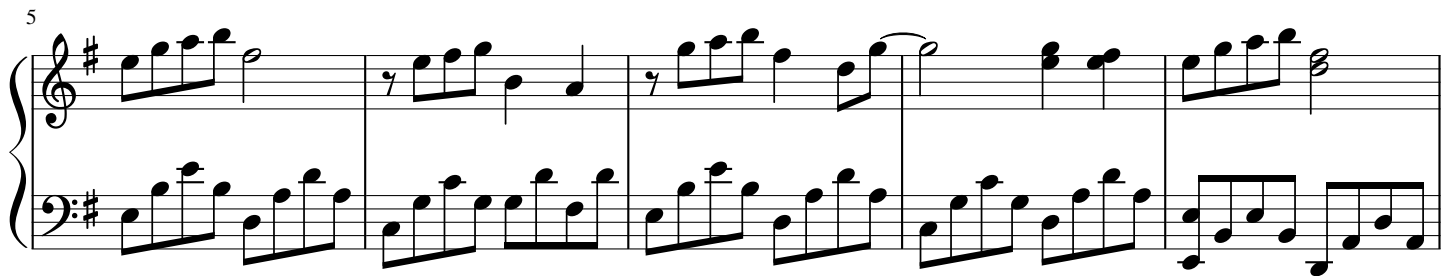
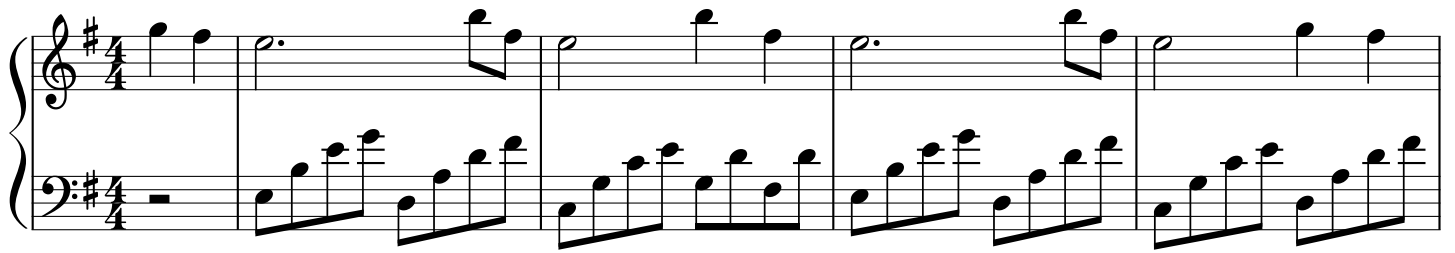


Darkside

Alan Walker

♩ = 88



23

System 1 (Measures 23-26): Treble staff features complex chords and eighth-note patterns. Bass staff provides a steady eighth-note accompaniment.

27

System 2 (Measures 27-31): Treble staff continues with chords and eighth notes. Bass staff maintains the eighth-note accompaniment.

32

System 3 (Measures 32-36): Treble staff continues with chords and eighth notes. Bass staff maintains the eighth-note accompaniment.

37

System 4 (Measures 37-40): Treble staff continues with chords and eighth notes. Bass staff maintains the eighth-note accompaniment.

41

System 5 (Measures 41-45): Treble staff continues with chords and eighth notes. Bass staff maintains the eighth-note accompaniment.

46

System 6 (Measures 46-50): Treble staff continues with chords and eighth notes. Bass staff maintains the eighth-note accompaniment.

50

System 1 (measures 50-53) in G major. The right hand features a complex texture with many beamed sixteenth and thirty-second notes, often in a descending or ascending scale-like pattern. The left hand provides a steady accompaniment with eighth and sixteenth notes, including some triplets.

54

System 2 (measures 54-56). The right hand continues with dense, beamed sixteenth-note patterns. The left hand maintains a rhythmic accompaniment with eighth and sixteenth notes.

57

System 3 (measures 57-61). The right hand has more melodic movement with eighth and sixteenth notes. The left hand continues with a steady eighth-note accompaniment.

62

System 4 (measures 62-66). Measure 63 contains a first ending bracket marked with an '8'. The right hand has some rests in measures 64 and 65. The left hand continues with eighth-note accompaniment.

67

System 5 (measures 67-70). The right hand features more complex beamed sixteenth-note patterns. The left hand continues with eighth-note accompaniment.

71

System 6 (measures 71-74). The right hand has a melodic line with some rests. The left hand continues with eighth-note accompaniment, ending with a double bar line in measure 74.