

Reason

Yiruma

Andantino (♩ = 76)

Measures 1-4 of the piece. The music is in 4/4 time with a key signature of three sharps (F#, C#, G#). The tempo is Andantino (♩ = 76). The dynamics are marked *mp* (mezzo-piano). The melody in the right hand features a series of eighth and sixteenth notes, while the left hand provides a steady accompaniment of eighth notes.

Measures 5-7. Measure 5 is marked with a box containing the letter 'A'. The dynamics are *mp* and the tempo is *a tempo*. The melody continues with eighth and sixteenth notes, and the left hand accompaniment remains consistent.

Measures 8-11. The melody in the right hand continues with eighth and sixteenth notes, and the left hand accompaniment remains consistent.

Measures 12-14. The melody in the right hand continues with eighth and sixteenth notes, and the left hand accompaniment remains consistent.

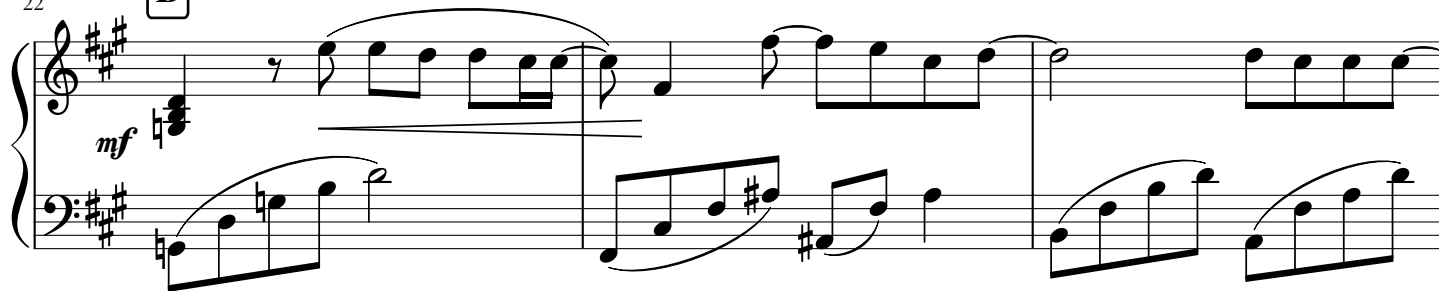
Measures 15-17. The melody in the right hand continues with eighth and sixteenth notes, and the left hand accompaniment remains consistent.

18



22

B

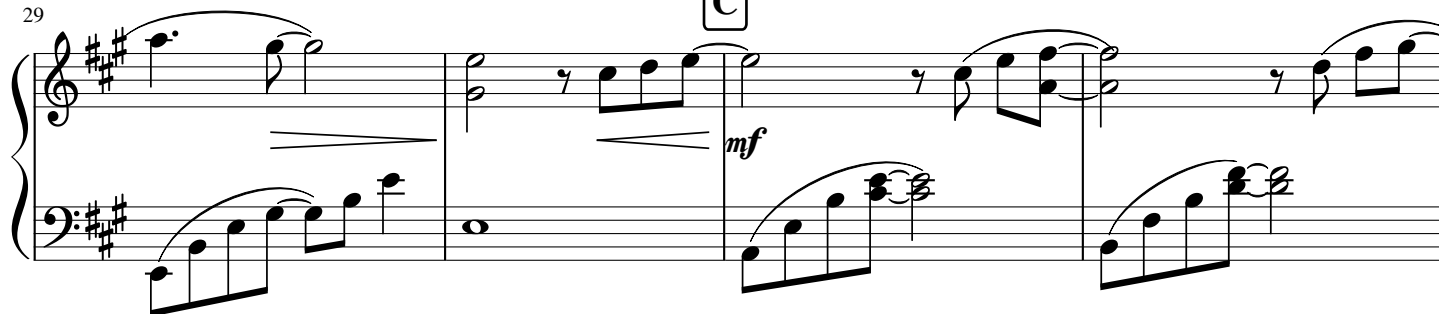


25



29

C



33



37

mf

41

44

1.

mp

47

2.

mp

51

rit.