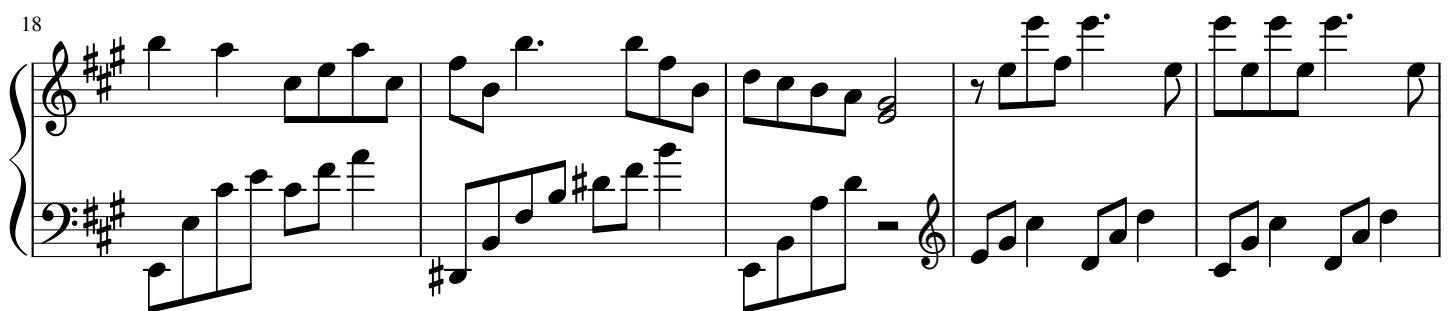
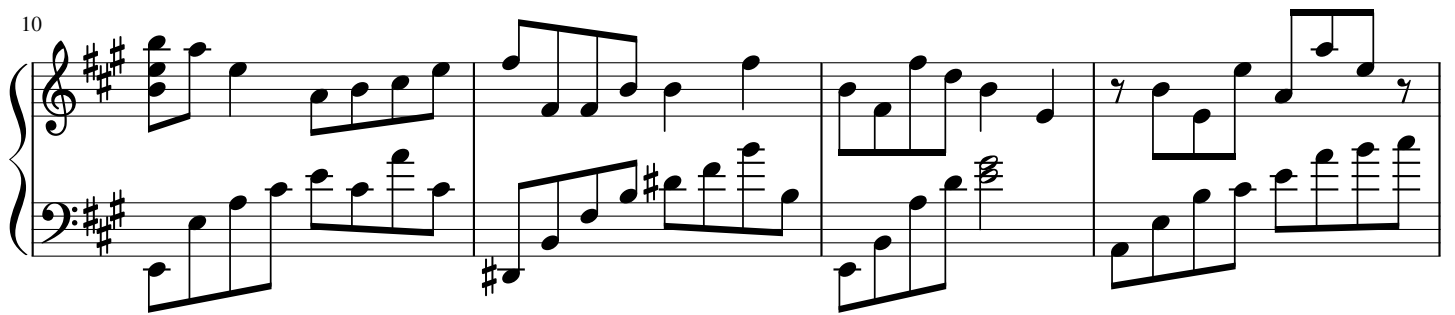
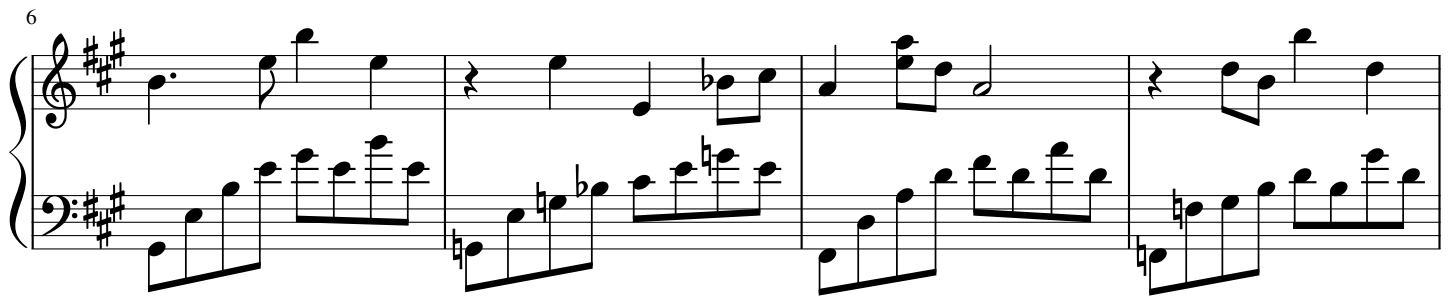
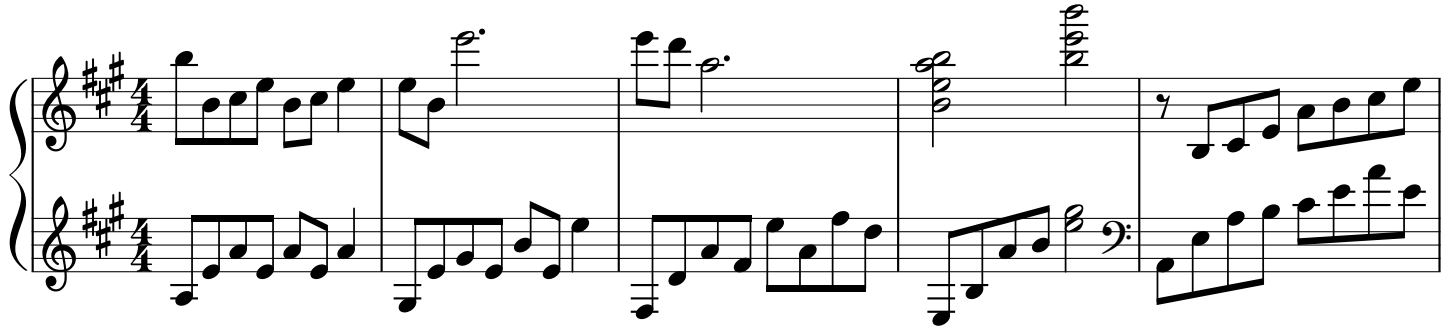


Wait there - piano

Yiruma



23

28

31

34

38

42

2

46

System 1 (Measures 46-49): The right hand features a melodic line with a long slur over measures 47 and 48. The left hand provides a steady eighth-note accompaniment. The key signature is three sharps (F#, C#, G#).

50

System 2 (Measures 50-53): The right hand continues the melodic development. Measure 52 contains a whole rest. The left hand accompaniment remains consistent. The key signature is three sharps.

54

System 3 (Measures 54-58): Both hands feature more active eighth-note patterns. The right hand has a series of beamed eighth notes. The key signature is three sharps.

59

System 4 (Measures 59-63): The right hand has a complex melodic line with many beamed eighth notes. The left hand continues with eighth-note accompaniment. The key signature is three sharps.

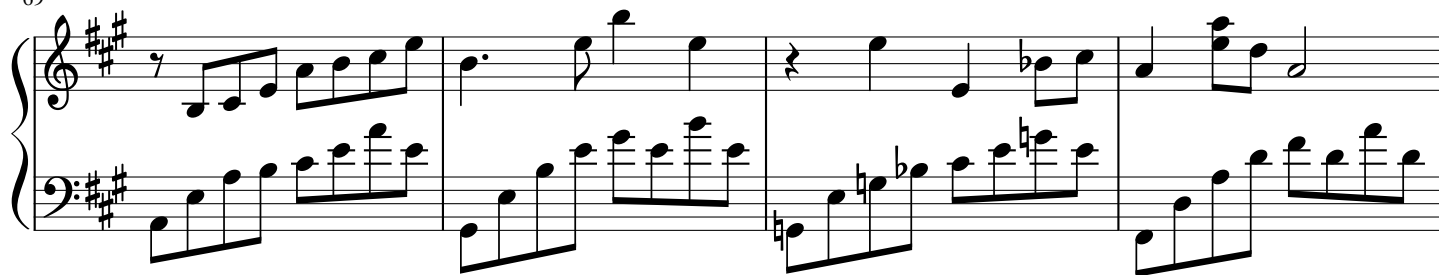
62

System 5 (Measures 62-65): The right hand features dense sixteenth-note passages. The left hand accompaniment is steady. The key signature is three sharps.

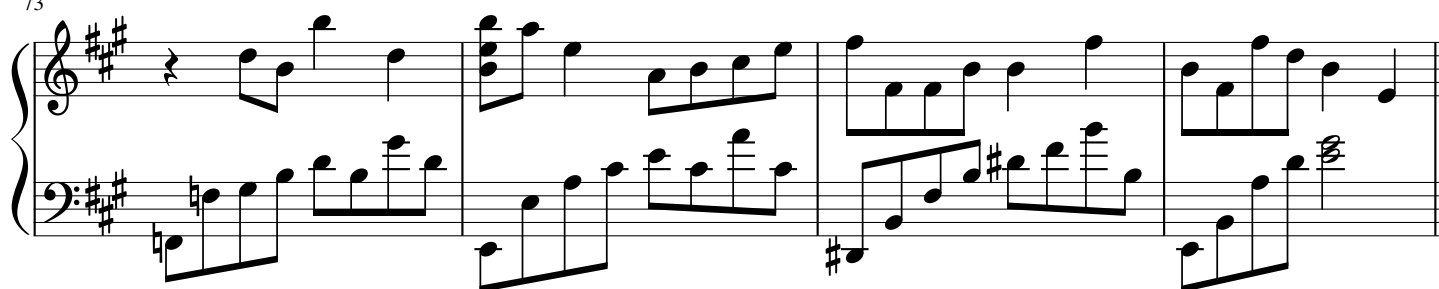
65

System 6 (Measures 65-68): The right hand has a melodic line with some rests. The left hand accompaniment continues. The key signature is three sharps.

69



73



77



82



87

