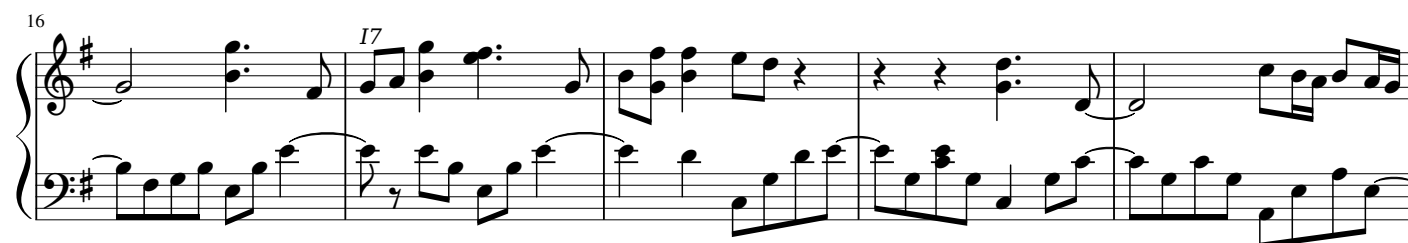
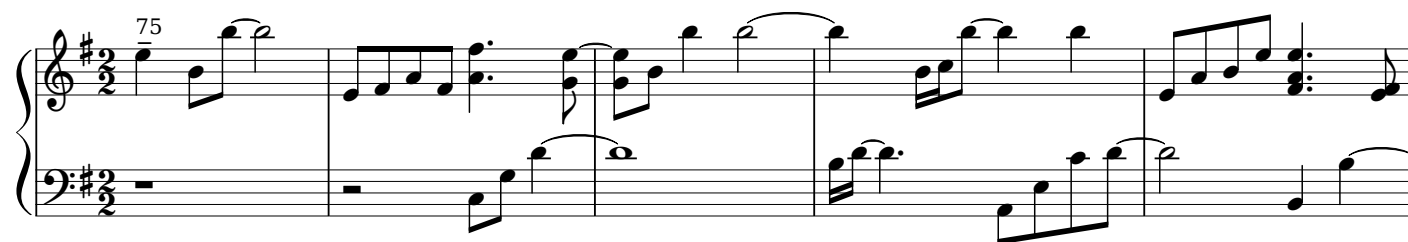


# Танцы на стёклах

Макс Фадеев

12



26 27

This system contains measures 26 through 29. The key signature has one sharp (F#). Measure 26 features a treble staff with a series of eighth-note chords and a bass staff with a descending eighth-note line. Measure 27 continues with similar textures. Measures 28 and 29 show more complex chordal structures in the treble and sustained bass notes.

30

This system contains measures 30 through 35. Measure 30 begins with a treble staff featuring a half-note chord and a bass staff with a quarter-note pattern. Measures 31-35 show a variety of rhythmic patterns, including eighth-note runs and chords, with some measures featuring ties across the bar line.

36

This system contains measures 36 through 40. Measure 36 starts with a treble staff having a sixteenth-note triplet and a bass staff with a quarter-note. Measures 37-40 continue with a mix of eighth and sixteenth notes in both staves, creating a flowing texture.

41

This system contains measures 41 through 43. Measure 41 features a treble staff with a half-note chord and a bass staff with a quarter-note. Measures 42 and 43 show sustained chords in the treble and moving lines in the bass.

44

This system contains measures 44 through 48. Measure 44 begins with a treble staff featuring a half-note chord and a bass staff with a quarter-note. Measures 45-48 show a progression of chords and moving lines, with measure 48 ending with a double bar line.

49

This system contains measures 49 through 53. Measure 49 starts with a treble staff featuring a half-note chord and a bass staff with a quarter-note. Measures 50-53 continue with a mix of eighth and sixteenth notes in both staves, creating a flowing texture.

54

This system contains measures 54 through 58. Measure 54 begins with a treble staff featuring a half-note chord and a bass staff with a quarter-note. Measures 55-58 show a progression of chords and moving lines, with measure 58 ending with a double bar line.

59

Measures 59-63. Treble clef has a key signature of one sharp (F#). Bass clef has a key signature of one sharp (F#). The music features a mix of chords and moving lines in both hands, with a fermata in the bass line at the end of measure 63.

64

Measures 64-68. Treble clef has a key signature of one sharp (F#). Bass clef has a key signature of one sharp (F#). The music continues with complex harmonic textures and melodic movement.

69

Measures 69-73. Treble clef has a key signature of one sharp (F#). Bass clef has a key signature of one sharp (F#). The music features a mix of chords and moving lines in both hands.

74

Measures 74-77. Treble clef has a key signature of one sharp (F#). Bass clef has a key signature of one sharp (F#). The music continues with complex harmonic textures and melodic movement.

78

Measures 78-81. Treble clef has a key signature of one sharp (F#). Bass clef has a key signature of one sharp (F#). The music concludes with a final cadence in both hands.

Макс Фадеев - Танцы на стёклах

Дом, тихо-тихо в нём.  
Я открою дверь - никого не жду.  
Мне теперь не верь!  
Больше не приду!

Я строил этот мост,  
Чтобы не упасть,  
Ни тебе, ни мне.  
И не унесла тихая вода!

Припев:  
Танцы на стёклах - танцы не для слабых!  
Танцы без правил, ты так не смогла бы!  
Танцы на стеклах - я бы не исправил!

Я ухожу и нет  
Ни меня, ни нас.  
И обычный свет успокоил так,  
Как ни я, ни ты.

Крик где-то в тишине.  
Не зови меня - я не повернусь  
И прости меня,  
Больше не вернусь.

Припев:  
Танцы на стёклах - танцы не для слабых!  
Танцы без правил, ты так не смогла бы!  
Танцы на стёклах - я бы не исправил!  
Танцы на стёклах - танцы не для слабых!  
Танцы без правил, ты так не смогла бы!  
Танцы на стёклах - я бы не исправил!