

Already

Beyoncé, Shatta Wale, Major Lazer

♩ = 100

Measures 1-5 of the piano introduction. The key signature has one flat (B-flat). The time signature is 4/4. The melody in the right hand consists of eighth notes with rests. The bass line in the left hand features chords and single notes.

Measures 6-9. The melody continues with eighth notes. The bass line has a steady eighth-note accompaniment.

Measures 10-13. The melody continues with eighth notes. The bass line has a steady eighth-note accompaniment.

Measures 14-17. The melody continues with eighth notes. The bass line has a steady eighth-note accompaniment.

Measures 18-21. The melody continues with eighth notes. The bass line has a steady eighth-note accompaniment.

22

22

25

[illegible]

34

34

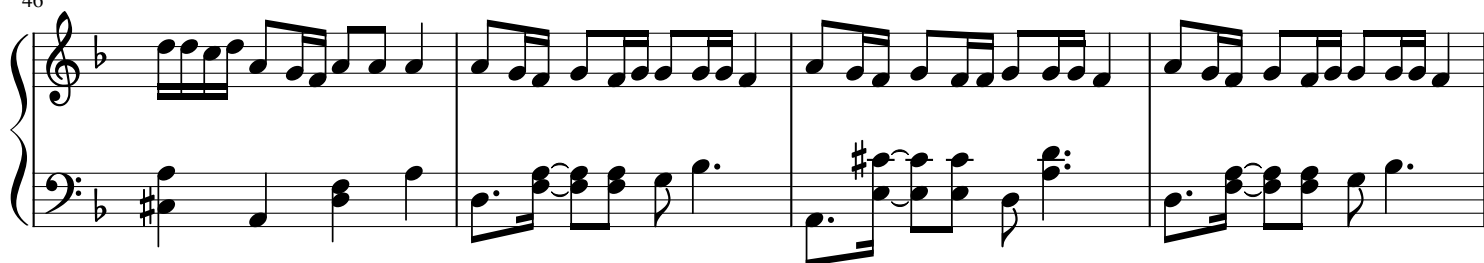
38

38

42



46



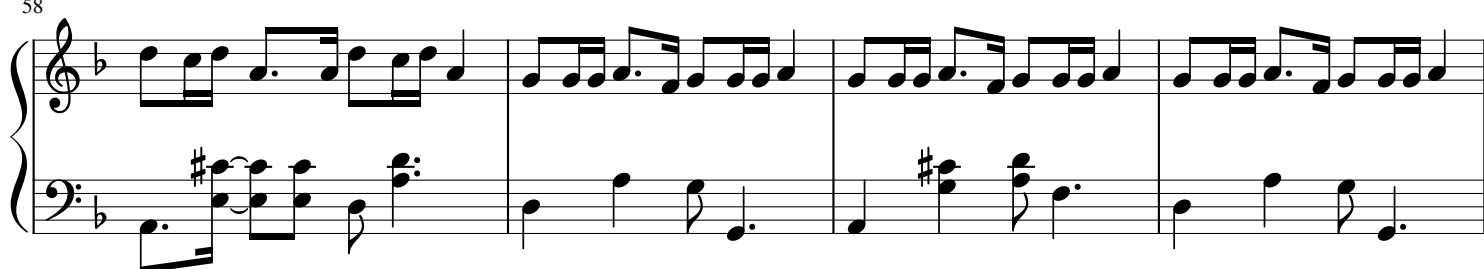
50



54



58



62

Measures 62-64 of a musical score in B-flat major. The treble clef contains eighth and sixteenth note patterns, while the bass clef features chords with a sharp sign (F#) and eighth notes.

65

Measures 65-67 of a musical score in B-flat major. The treble clef contains eighth and sixteenth note patterns, while the bass clef features chords with a sharp sign (F#) and eighth notes.

68

Measures 68-71 of a musical score in B-flat major. The treble clef contains eighth and sixteenth note patterns, while the bass clef features chords with a sharp sign (F#) and eighth notes.

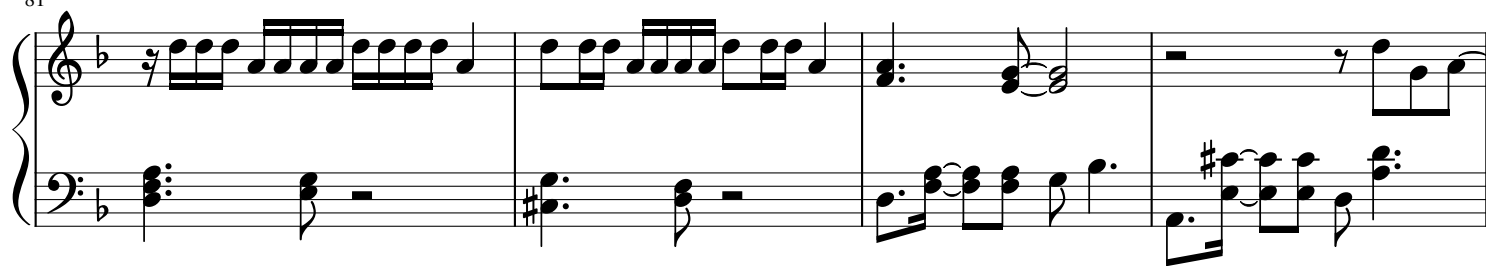
72

Measures 72-76 of a musical score in B-flat major. The treble clef contains eighth and sixteenth note patterns, while the bass clef features chords with a sharp sign (F#) and eighth notes.

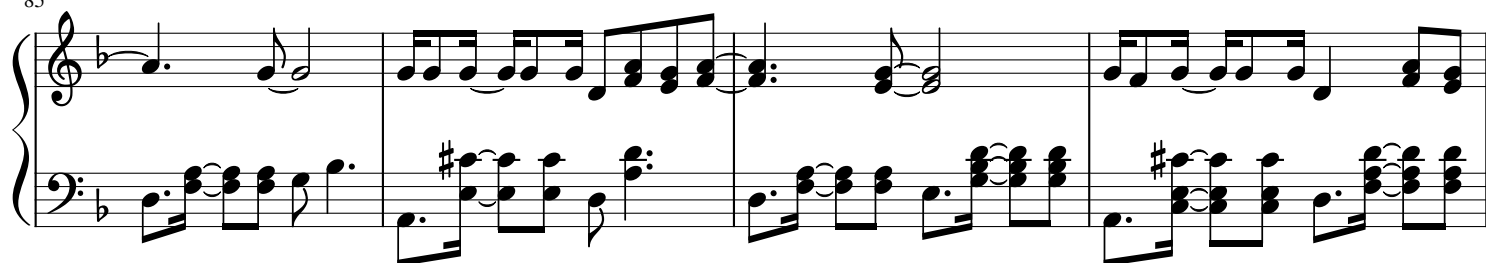
77

Measures 77-80 of a musical score in B-flat major. The treble clef contains eighth and sixteenth note patterns, while the bass clef features chords with a sharp sign (F#) and eighth notes.

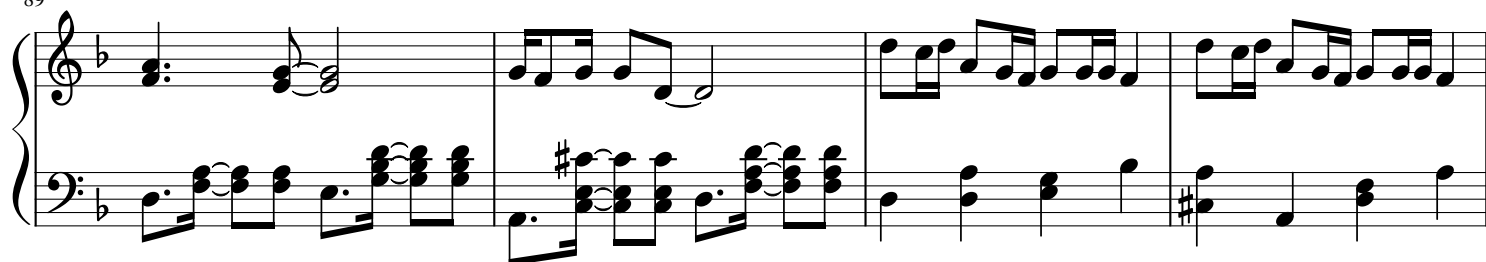
81



85



89



93



97

