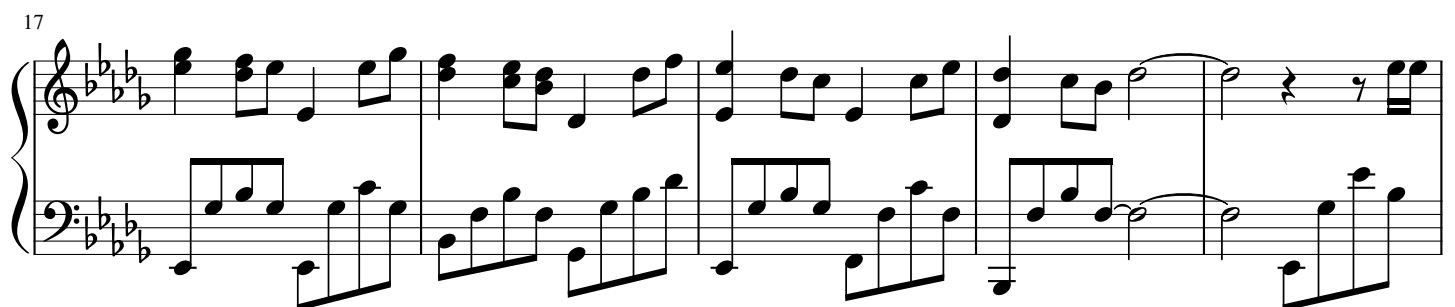
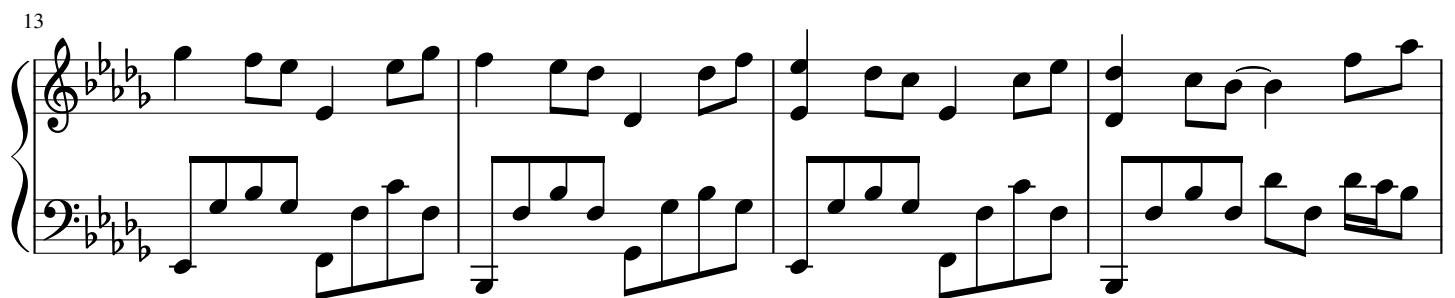
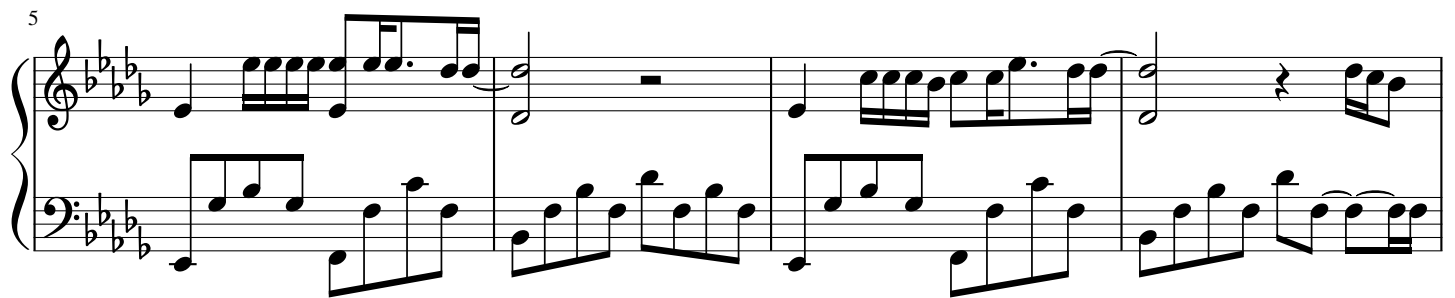
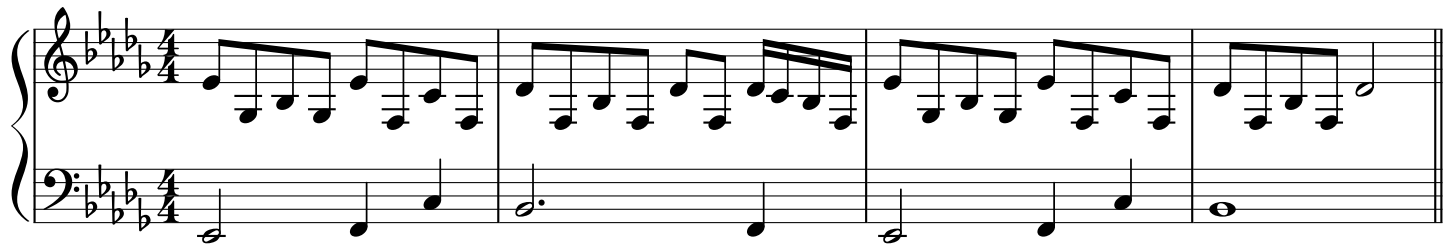


# Наргиз - Ты моя нежность

♩ = 60

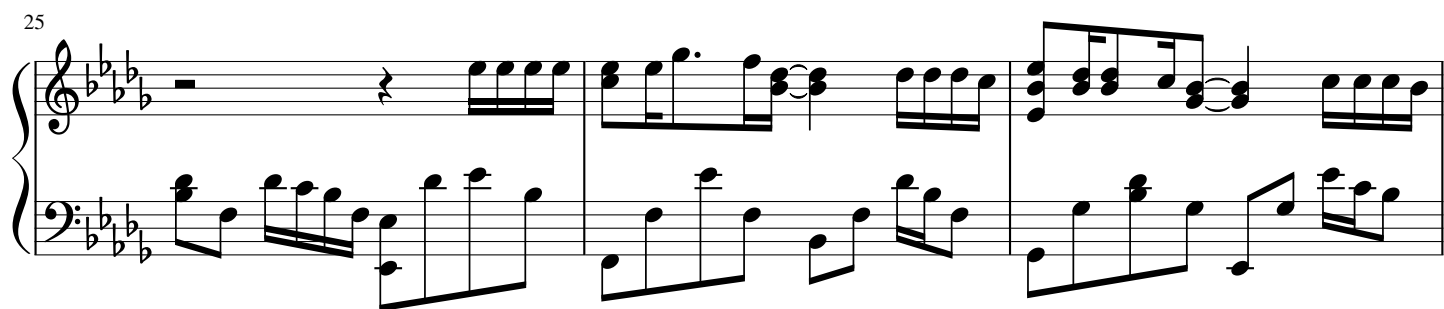


22



System 22: Treble and bass staves in E-flat major (three flats). The treble staff begins with a half note chord (F4, A-flat4, C5), followed by a quarter note melody (F4, A-flat4, C5, B4). The bass staff features a continuous eighth-note accompaniment pattern.

25



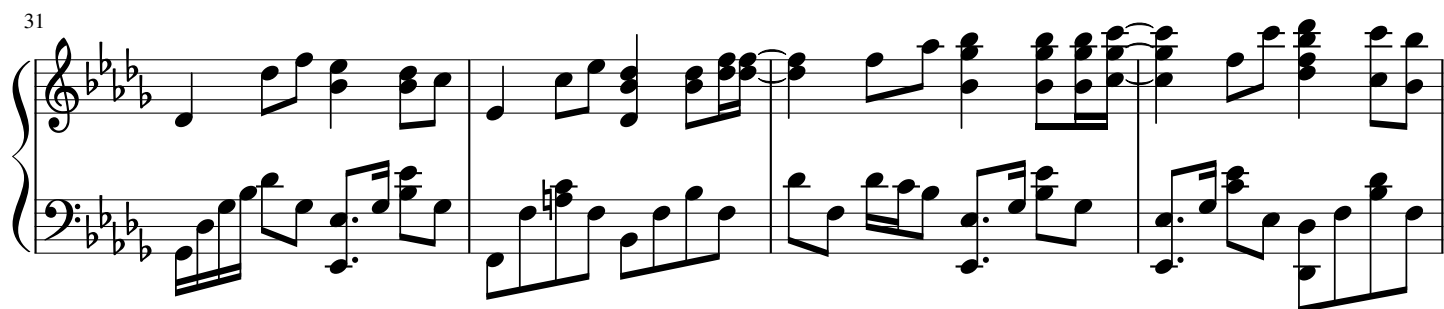
System 25: Treble staff has a whole rest followed by a half note chord (F4, A-flat4, C5). The bass staff continues the eighth-note accompaniment pattern.

28



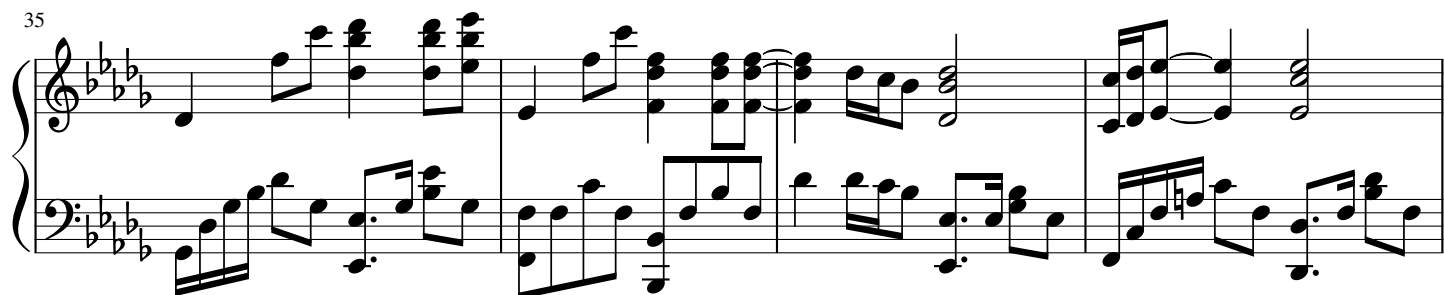
System 28: Treble staff features a half note chord (F4, A-flat4, C5) followed by a quarter note melody (F4, A-flat4, C5, B4). The bass staff continues the eighth-note accompaniment pattern.

31



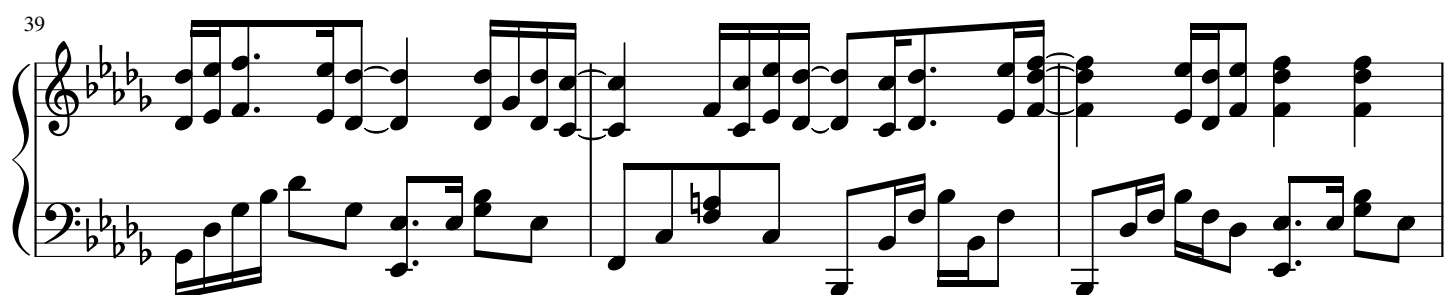
System 31: Treble staff has a half note chord (F4, A-flat4, C5) followed by a quarter note melody (F4, A-flat4, C5, B4). The bass staff continues the eighth-note accompaniment pattern.

35



System 35: Treble staff has a half note chord (F4, A-flat4, C5) followed by a quarter note melody (F4, A-flat4, C5, B4). The bass staff continues the eighth-note accompaniment pattern.

39



System 39: Treble staff has a half note chord (F4, A-flat4, C5) followed by a quarter note melody (F4, A-flat4, C5, B4). The bass staff continues the eighth-note accompaniment pattern.

42

Measures 42-45 of a musical score in G major (one sharp). The right hand features a complex texture with many beamed eighth and sixteenth notes, often in a triplet or sixteenth-note group. The left hand provides a steady accompaniment with eighth and sixteenth notes. The key signature has one sharp (F#).

46

Measures 46-49 of a musical score in G major (one sharp). The right hand continues with a melodic line of eighth and sixteenth notes. The left hand has a more active role with eighth and sixteenth notes. The key signature has one sharp (F#).

50

Measures 50-52 of a musical score in G major (one sharp). The right hand features a complex texture with many beamed eighth and sixteenth notes, often in a triplet or sixteenth-note group. The left hand provides a steady accompaniment with eighth and sixteenth notes. The key signature has one sharp (F#).

53

Measures 53-56 of a musical score in G major (one sharp). The right hand features a complex texture with many beamed eighth and sixteenth notes, often in a triplet or sixteenth-note group. The left hand provides a steady accompaniment with eighth and sixteenth notes. The key signature has one sharp (F#).

57

Measures 57-60 of a musical score in G major (one sharp). The right hand features a complex texture with many beamed eighth and sixteenth notes, often in a triplet or sixteenth-note group. The left hand provides a steady accompaniment with eighth and sixteenth notes. The key signature has one sharp (F#).