

Changes

♩ = 72

Singer XXXTENTACION

Intro

4/4

F Dm7 Am7

The piano introduction consists of four measures in 4/4 time. The first measure has a treble clef with a whole note F and a bass clef with a whole note F. The second measure has a treble clef with a whole note Dm7 and a bass clef with a whole note Dm7. The third measure has a treble clef with a whole note Am7 and a bass clef with a whole note Am7. The fourth measure has a treble clef with a whole note C and a bass clef with a whole note C. The notes are written in red.

Chorus

5 F Dm7

The piano accompaniment for the first line of the chorus consists of two measures in 4/4 time. The first measure has a treble clef with a whole note F and a bass clef with a whole note F. The second measure has a treble clef with a whole note Dm7 and a bass clef with a whole note Dm7. The notes are written in red.

Mmm, ba-by I don't un-der-

stand this you're chan-ging I can't stand it my heart can't take this

7 Am7

The piano accompaniment for the second line of the chorus consists of two measures in 4/4 time. The first measure has a treble clef with a whole note Am7 and a bass clef with a whole note Am7. The second measure has a treble clef with a whole note Am7 and a bass clef with a whole note Am7. The notes are written in red.

da-mage and the way I feel, can't stand it Mmm, ba-by I dont un-der-

9 F Dm7

The piano accompaniment for the third line of the chorus consists of two measures in 4/4 time. The first measure has a treble clef with a whole note F and a bass clef with a whole note F. The second measure has a treble clef with a whole note Dm7 and a bass clef with a whole note Dm7. The notes are written in red.

stand this you're chan-ging I can't stand it my heart can't take this

11 Am7

The piano accompaniment for the fourth line of the chorus consists of two measures in 4/4 time. The first measure has a treble clef with a whole note Am7 and a bass clef with a whole note Am7. The second measure has a treble clef with a whole note Am7 and a bass clef with a whole note Am7. The notes are written in red.

da-mage and the way I feel, can't stand it Mmm, ba-by I don't un-der-

13 **Bridge** F Dm7

C D C C C D E E D C C C C C D E E D C
stand it girl, you making it hard for me girl, you making it hard for me

15 Am7

C C C C C D E E D C C C A G
girl, you ma-king it hard for me

17 F Dm7

C C C C C D E E D C C C C C D E E D C
stand it girl, you making it hard for me girl, you making it hard for me

19 Am7

C C C C C D E E D C C C C C E D C B
girl, you making it hard for me ba-by I don't un-der-

Chorus 21 F Dm7

C D B C D C B C D B C D C B
stand this you're chan-ging I can't stand it my heart can't take this

23

Am7



C D C C C D C B C D C C C E D C B
da - mage and the way I feel, can't stand it Mmm, ba - by I dont un - der-

25

F

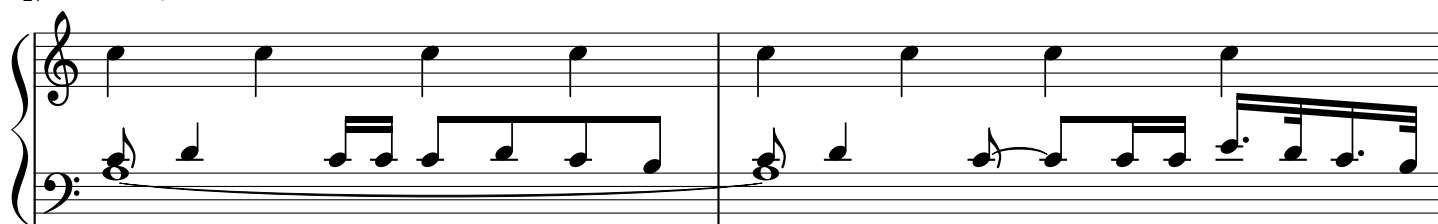
Dm7



C D B C D C B C D B C D C B
stand this you're chan - ging I can't stand it my heart can't take this

27

Am7



C D C C C D C B C D C C C E D C B
da - mage and the way I feel, can't stand it Mmm, ba - by I don't un - der-

29

F

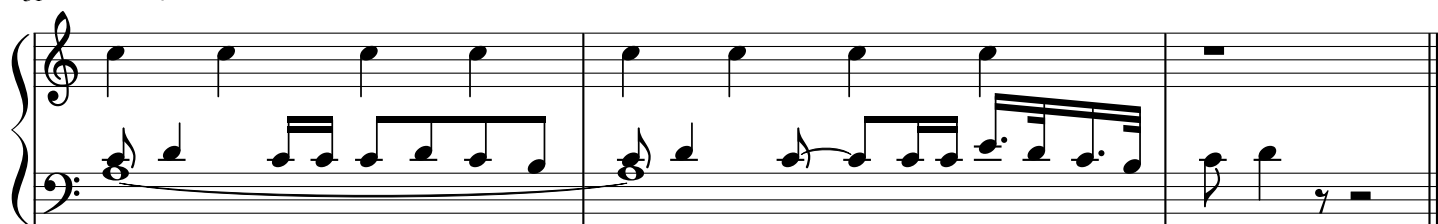
Dm7



C D B C D C B C D B C D C B
stand this you're chan - ging I can't stand it my heart can't take this

31

Am7



C D C C C D C B C D C C C E D C B C D
da-mage and the way I feel, can't stand it Mmm, ba-by I dont un-der - stand this