

♩ = 100

Measures 1-5 of the piece. The music is in 4/4 time with a key signature of one sharp (F#). The right hand features a complex melodic line with many beamed sixteenth and thirty-second notes, while the left hand provides a steady accompaniment of eighth and quarter notes.

Measures 6-10. The right hand continues its intricate melodic pattern, incorporating some rests. The left hand maintains a consistent rhythmic accompaniment.

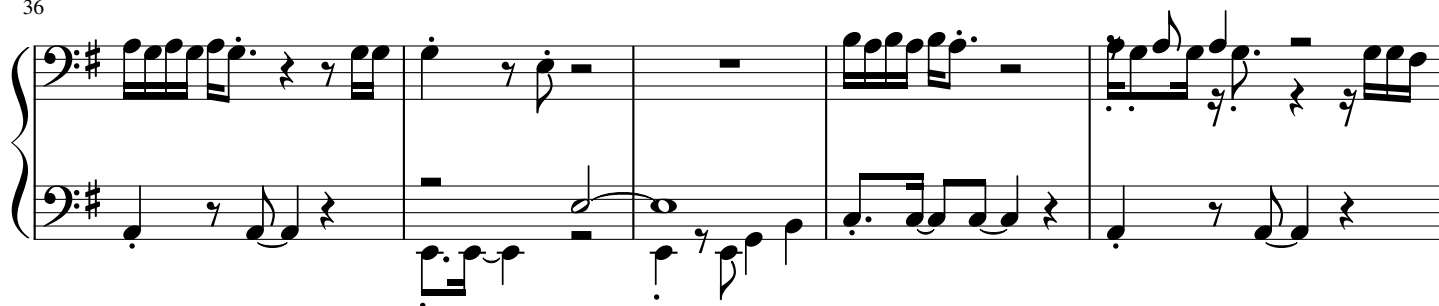
Measures 11-16. The right hand introduces a triplet of eighth notes in measure 15. The left hand continues with its accompaniment.

Measures 17-21. The right hand features several triplet markings over eighth notes. The left hand has a more active role with eighth-note patterns.

Measures 22-27. The right hand has a period of inactivity with whole rests, while the left hand plays a continuous eighth-note accompaniment.

Measures 28-32. The right hand remains silent with whole rests. The left hand continues its accompaniment, ending with a final sixteenth-note flourish in measure 32.

36



41



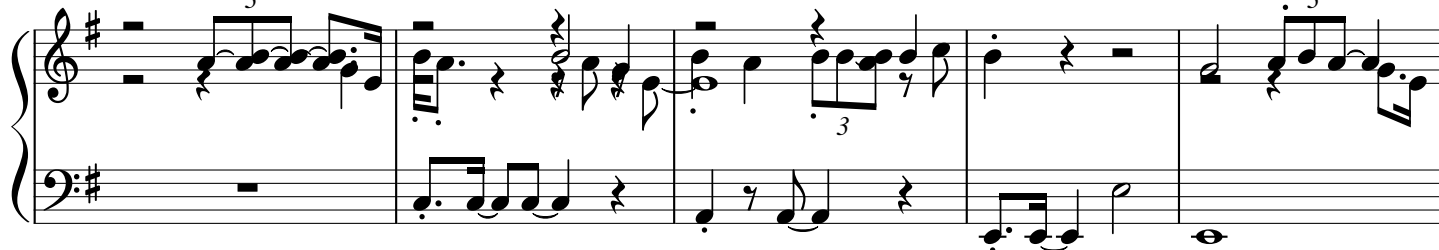
47



53



58



♩ = 60

63

