

You Say

Lauren Daigle

Lauren Daigle

♩ = 74

Measures 1-2 of the piano introduction. The key signature has one flat (Bb) and the time signature is 4/4. The tempo is marked as ♩ = 74. The first staff (treble clef) contains a continuous eighth-note melody. The second staff (bass clef) contains a single whole note chord in measure 1 and another in measure 2. A piano dynamic marking (*p*) is placed below the first staff in measure 1.

Measures 3-4 of the piano introduction. The first staff (treble clef) continues the eighth-note melody. The second staff (bass clef) contains a single whole note chord in measure 3 and another in measure 4. A mezzo-piano dynamic marking (*mp*) is placed above the first staff in measure 4.

Measures 5-6 of the piano introduction. The first staff (treble clef) contains a half note followed by a quarter note, then a half note. The second staff (bass clef) contains a continuous eighth-note melody. A mezzo-piano dynamic marking (*mp*) is placed above the first staff in measure 5.

Measures 7-9 of the piano introduction. The first staff (treble clef) contains a half note followed by a quarter note, then a half note. The second staff (bass clef) contains a continuous eighth-note melody. A mezzo-piano dynamic marking (*mp*) is placed above the first staff in measure 7.

Measures 10-12 of the piano introduction. The first staff (treble clef) contains a half note followed by a quarter note, then a half note. The second staff (bass clef) contains a continuous eighth-note melody. A mezzo-piano dynamic marking (*mp*) is placed above the first staff in measure 10.

15

A musical score for the song 'The Rose Tree'. It features a treble and bass staff. The treble staff begins with a single eighth note, followed by a whole rest, and then a series of eighth notes. The bass staff contains a continuous melody of eighth notes throughout the piece.

18

A musical score for the song 'The Rose Tree'. It consists of two staves, a treble staff and a bass staff, both in the key of B-flat major (indicated by two flats). The melody is written in the treble staff, and the accompaniment is in the bass staff. The piece is in 4/4 time. The melody starts with a quarter note G4, followed by quarter notes A4, Bb4, and A4, then a quarter rest, a quarter note G4, and a half note F#4. The bass line starts with a quarter note G3, followed by quarter notes A3, Bb3, and A3, then a quarter note G3, and a half note F#3. The piece ends with a double bar line.

20

20

mf *f*

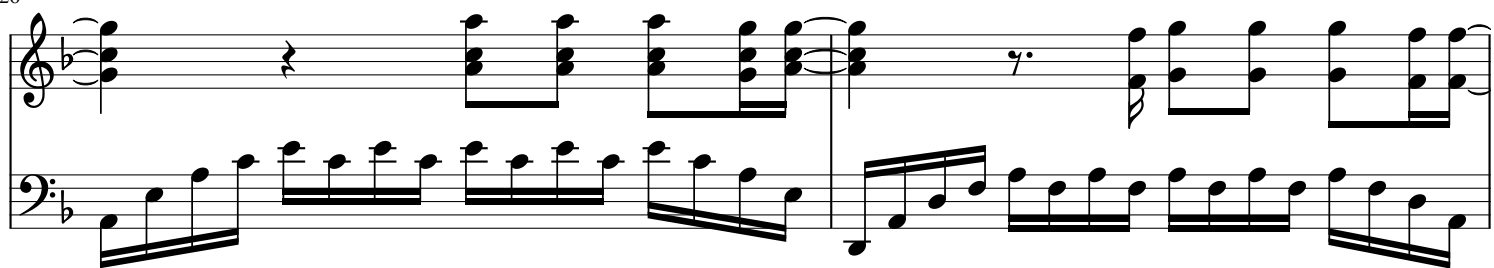
22

A musical score for the song 'The Rose Tree'. The score is written for a piano and voice. The piano part is in the bass clef, and the voice part is in the treble clef. The key signature has one flat (B-flat), and the time signature is 4/4. The piano part features a rhythmic melody with eighth and sixteenth notes, while the voice part consists of chords and single notes. The score is divided into two systems by a double bar line. The first system contains the first four measures, and the second system contains the next four measures. The piano part ends with a double bar line and a repeat sign.

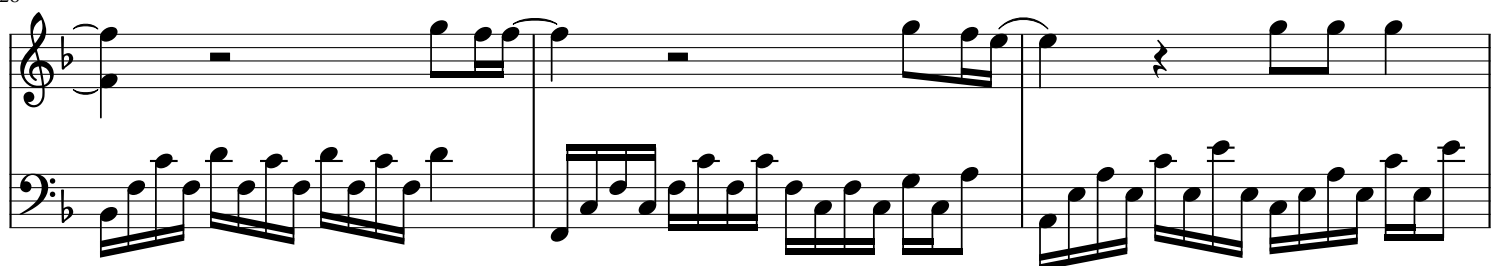
24

A musical score for the song 'The Rose Tree'. It features a treble and bass staff. The treble staff has a key signature of one flat (B-flat) and a common time signature (C). The melody is written in a simple, folk-like style. The bass staff provides a harmonic accompaniment, primarily using eighth and sixteenth notes. The score is divided into two systems by a double bar line. The first system contains the first four measures, and the second system contains the next four measures. The music is written in a clear, legible font.

26



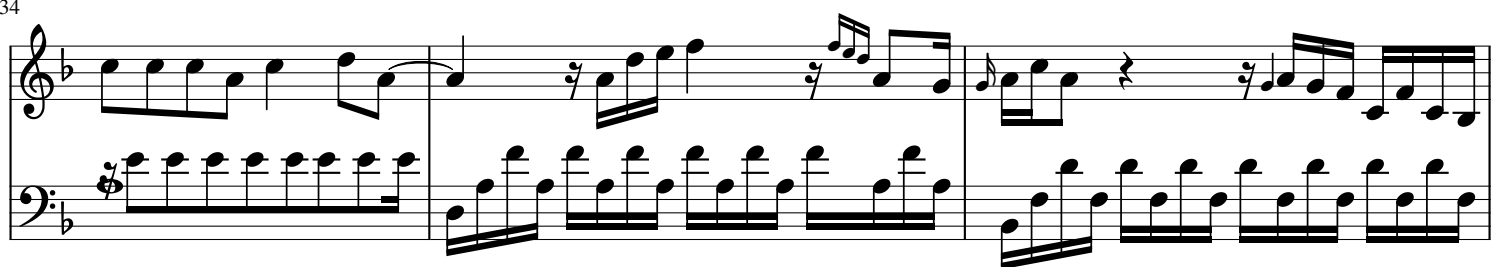
28



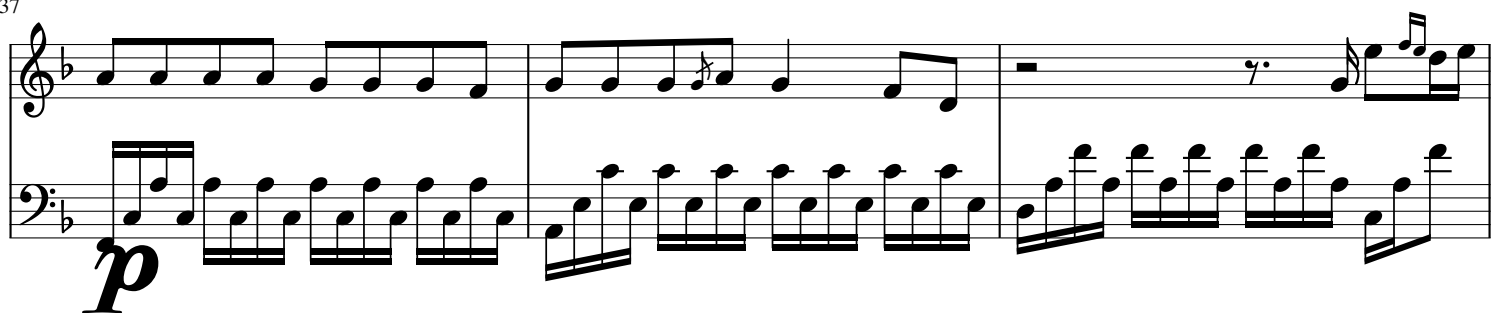
31



34



37



40

mf *f*

43

46

mp

49

52