

Happier

Arr. by MusicaLord

Marshmello and Bastille

PIANO

♩ = 100

Measures 1-5 of the piano arrangement. The key signature has one flat (Bb) and the time signature is 4/4. The melody in the right hand consists of eighth and quarter notes. The left hand provides a harmonic accompaniment with chords and single notes.

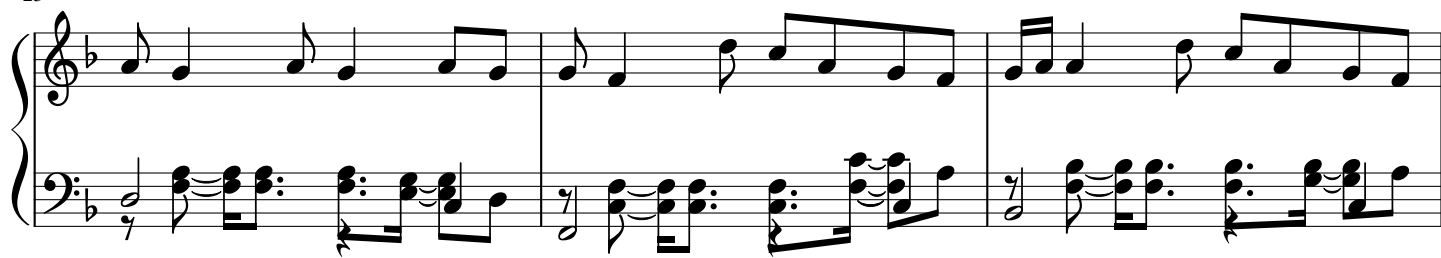
Measures 6-9 of the piano arrangement. Measures 6 and 7 feature triplets in the right hand. The left hand continues with harmonic support.

Measures 10-14 of the piano arrangement. Measures 10 and 11 feature triplets in the right hand. The left hand has a more active accompaniment with eighth notes in measures 13 and 14.

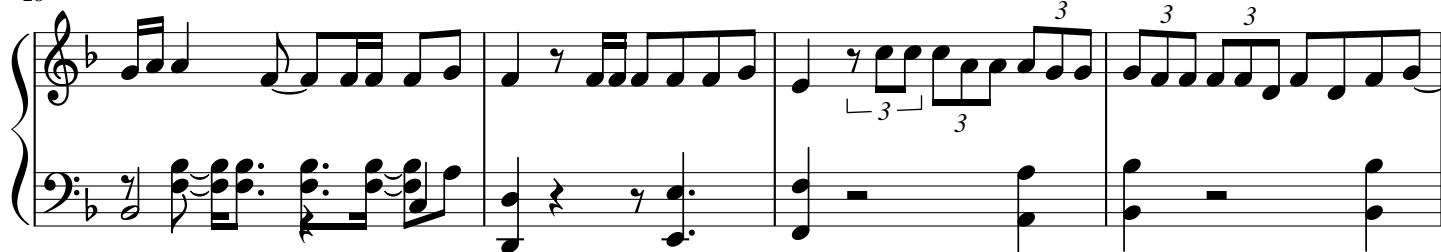
Measures 15-20 of the piano arrangement. Measures 15 and 16 feature triplets in the right hand. The left hand continues with a steady accompaniment.

Measures 21-24 of the piano arrangement. The right hand features a more complex melody with eighth and sixteenth notes. The left hand provides a rhythmic accompaniment with eighth notes.

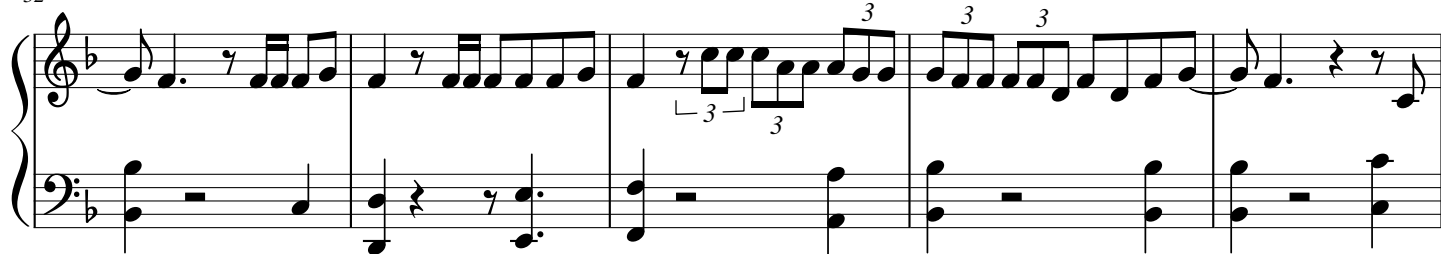
25



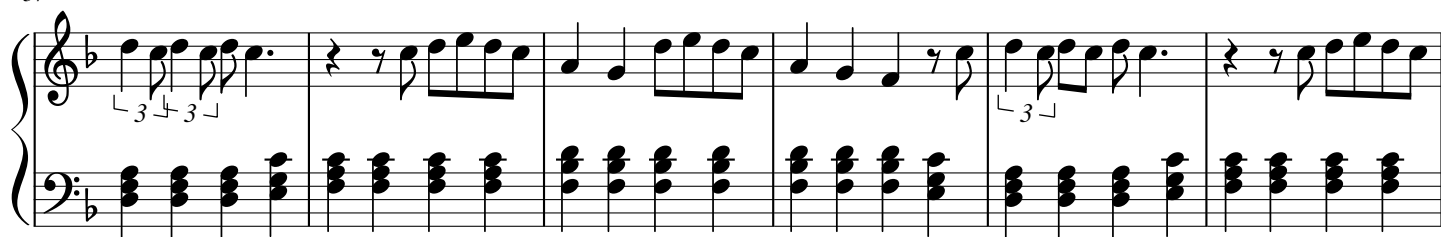
28



32



37



43



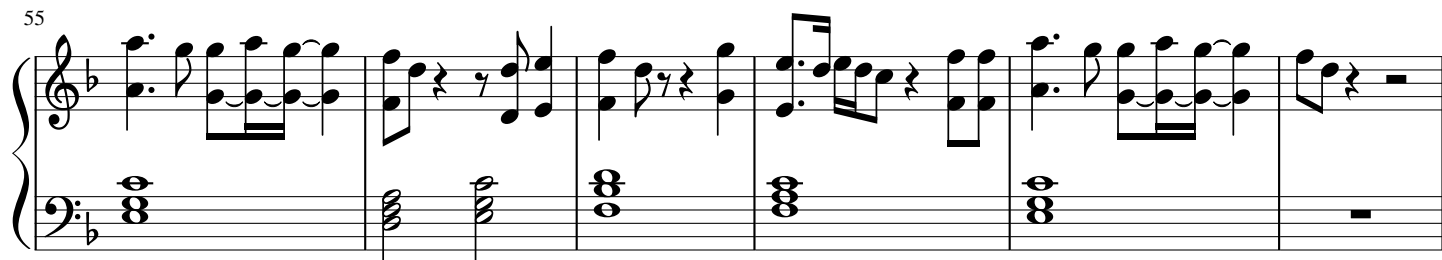
47



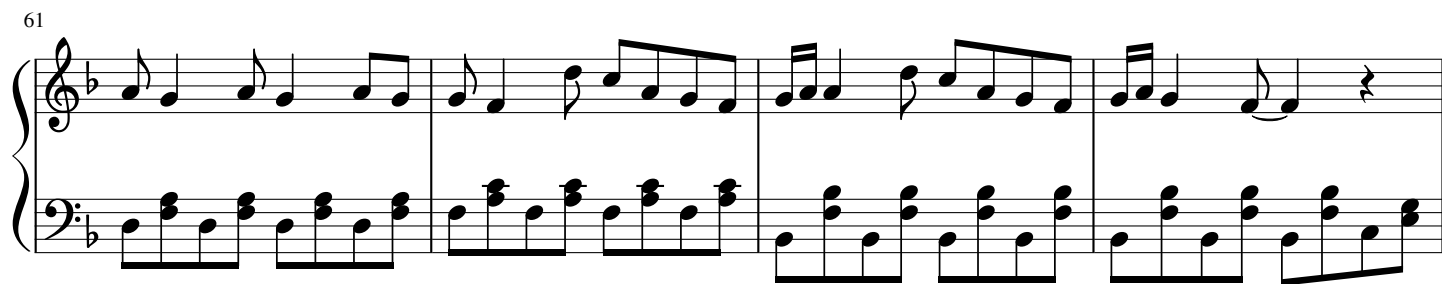
51



55



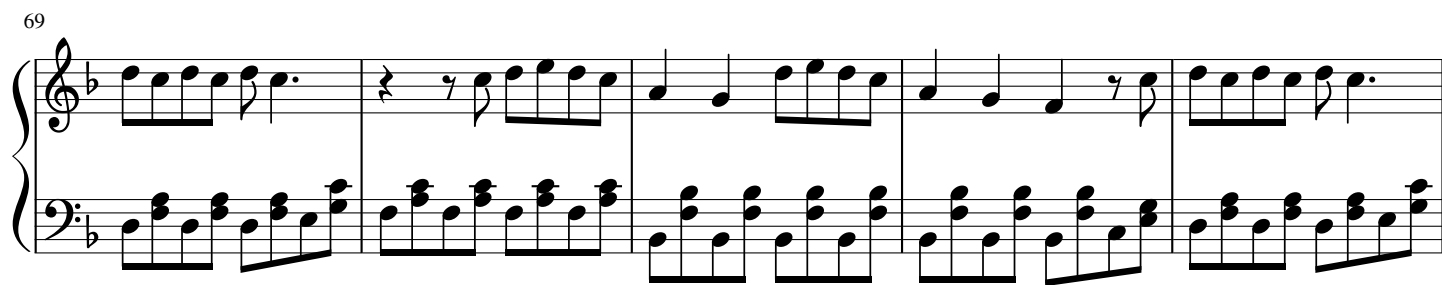
61



65



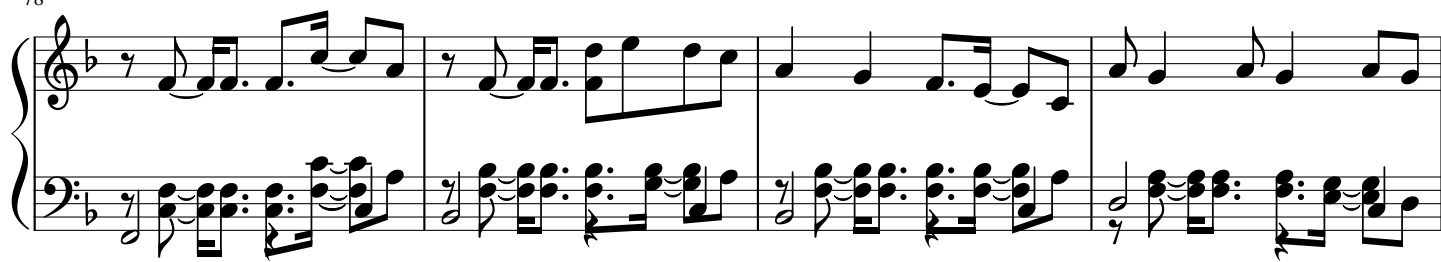
69



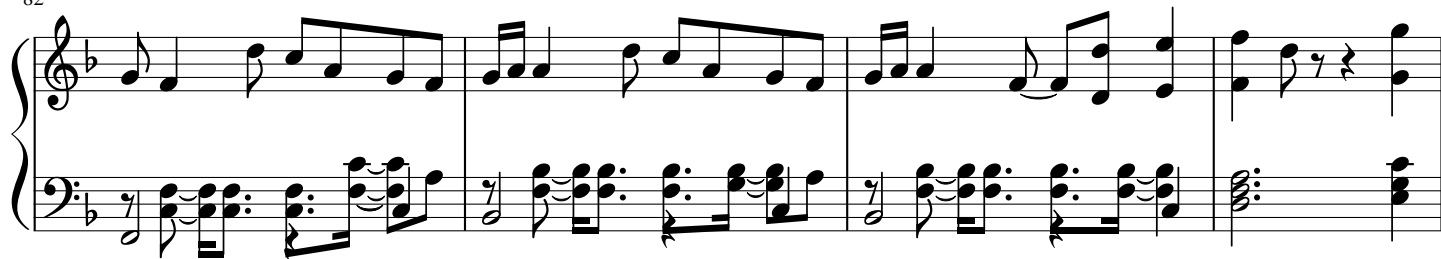
74



78



82



86

