

# Alan Walker - The Spectre

Piano

Chris Chui

♩ = 128

Measures 1-7 of the piano score. The key signature is three sharps (F#, C#, G#) and the time signature is 4/4. The tempo is marked as ♩ = 128. The melody in the right hand consists of eighth and quarter notes, while the left hand provides a steady accompaniment of chords.

Measures 8-13 of the piano score. The melody continues with eighth and quarter notes, and the accompaniment remains consistent with chords.

Measures 14-20 of the piano score. The melody features some rests and eighth notes, while the accompaniment continues with chords.

Measures 21-25 of the piano score. The melody includes eighth notes and quarter notes, and the accompaniment consists of chords.

Measures 26-30 of the piano score. The melody continues with eighth and quarter notes, and the accompaniment features chords and some eighth notes in the left hand.

31

Measures 31-34. Treble clef: eighth and sixteenth notes. Bass clef: eighth-note accompaniment.

35

Measures 35-38. Treble clef: melodic line with a repeat sign at measure 37. Bass clef: eighth-note accompaniment.

39

Measures 39-43. Treble clef: melodic line with a repeat sign at measure 41. Bass clef: eighth-note accompaniment.

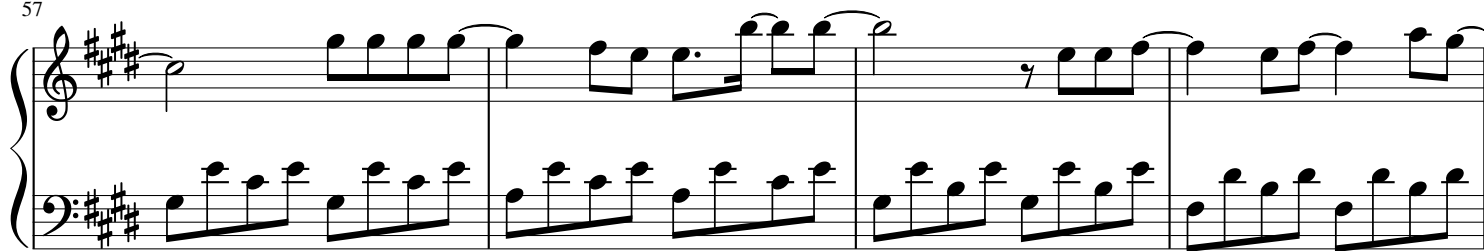
44

Measures 44-49. Treble clef: melodic line with a repeat sign at measure 47. Bass clef: eighth-note accompaniment.

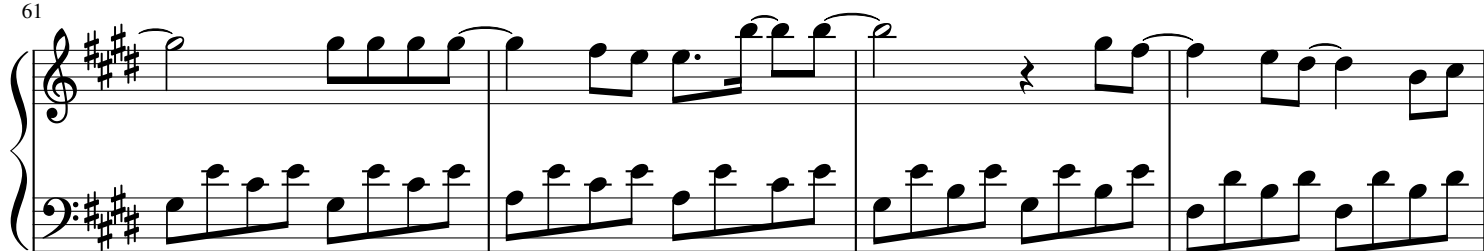
50

Measures 50-56. Treble clef: melodic line with a repeat sign at measure 53. Bass clef: eighth-note accompaniment.

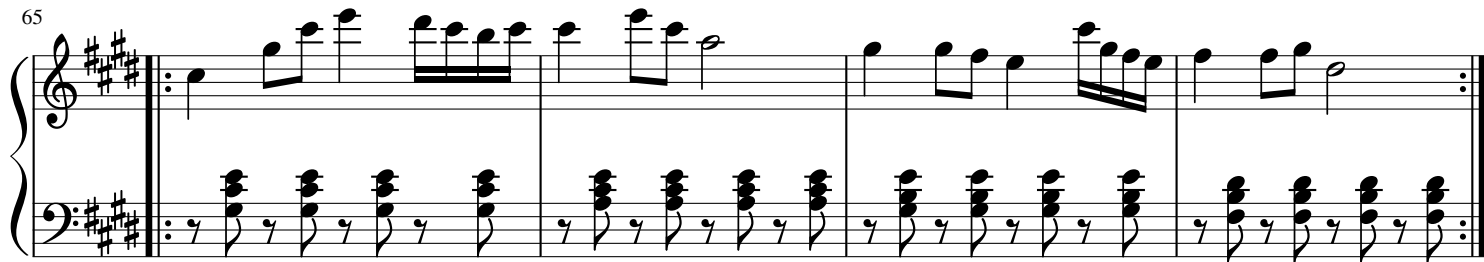
57



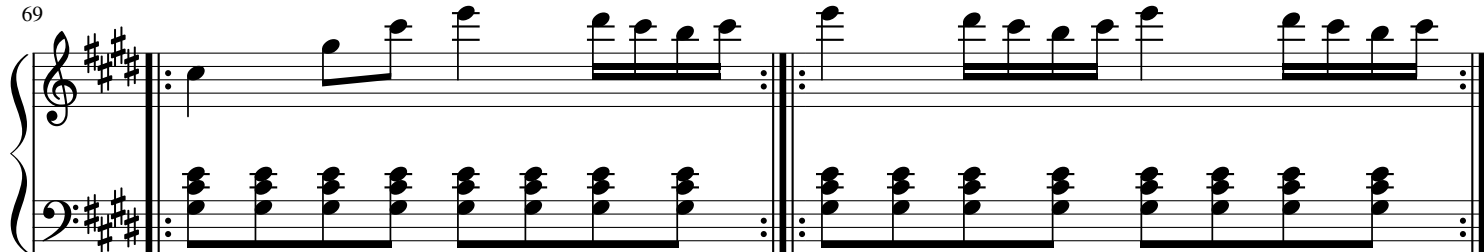
61



65



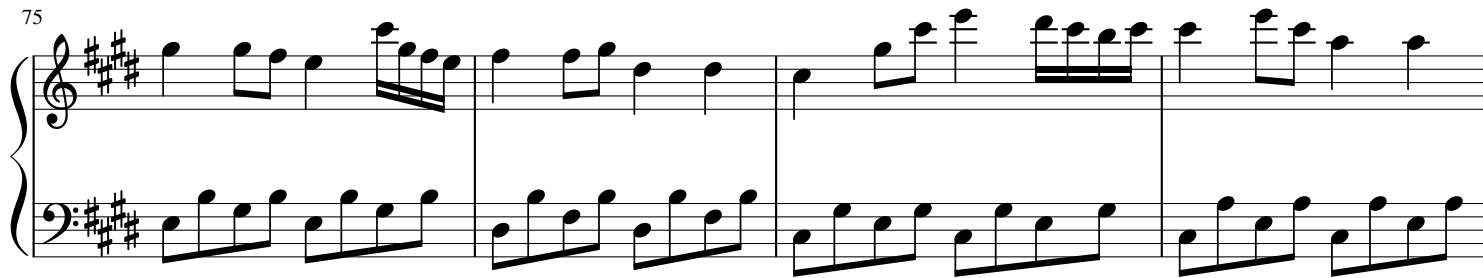
69



71



75



79



83

