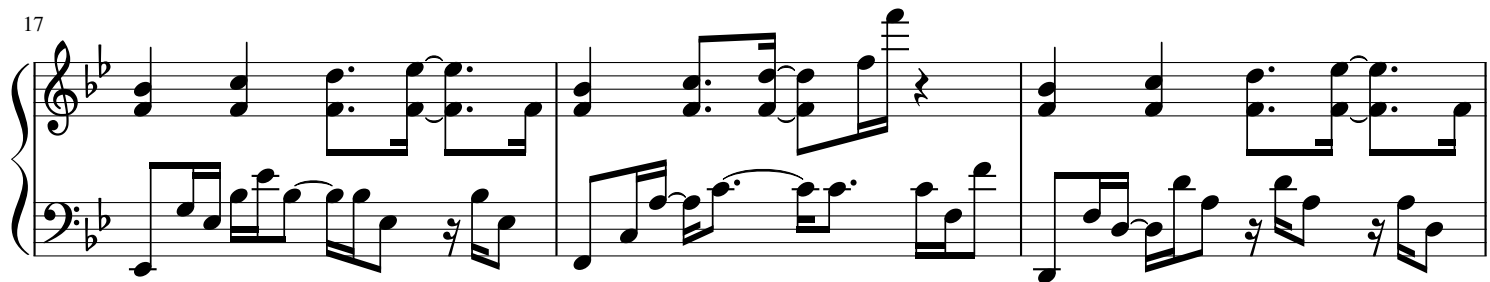
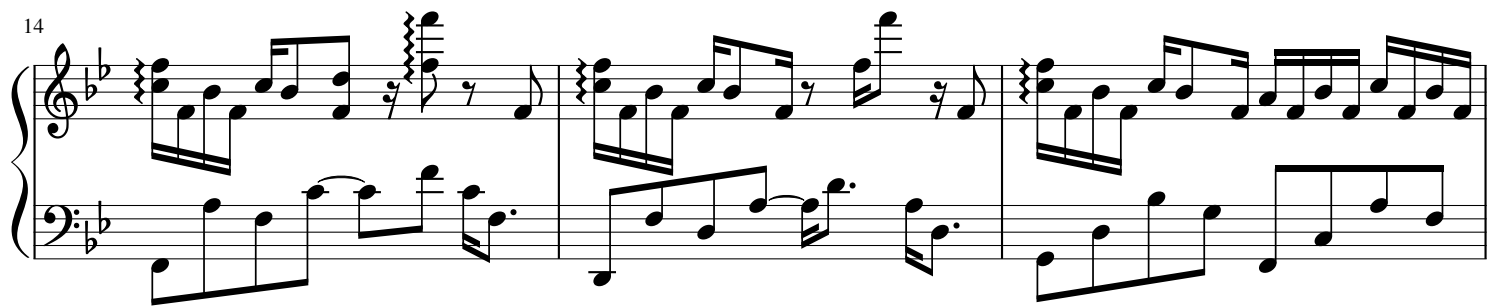
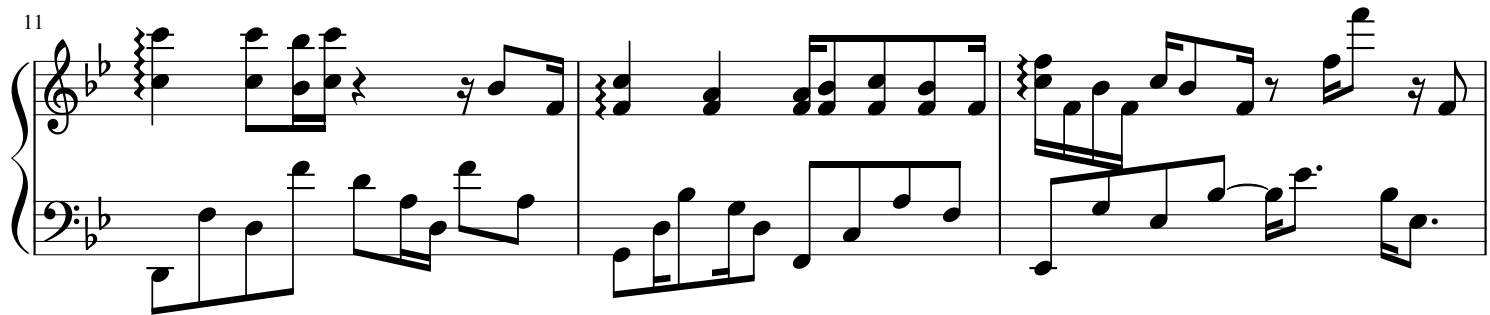
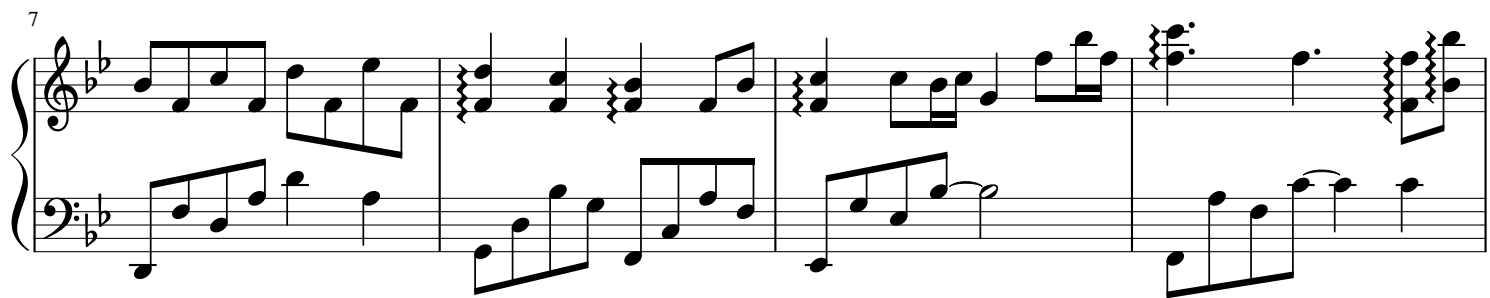
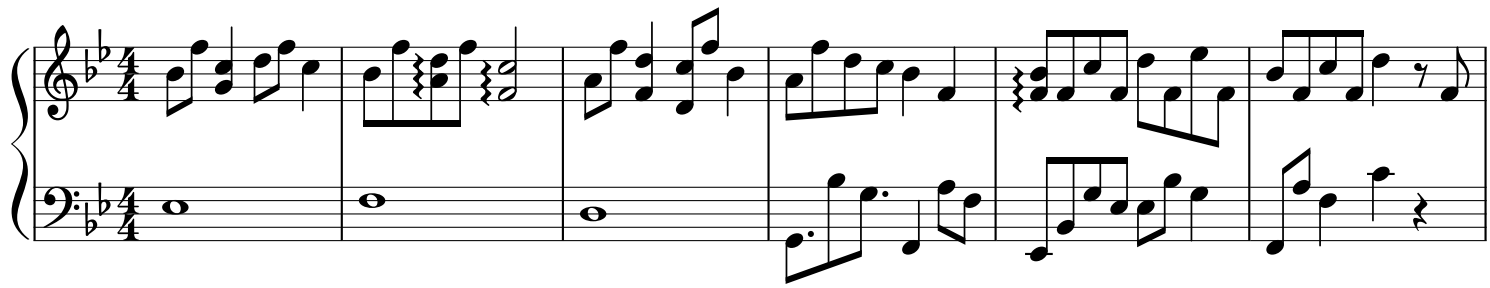


Faye's Theme (Finding Paradise)

Transcription by Umbra Aura

♩ = 68



20

System 1 (Measures 20-23): The right hand features a series of chords and dyads, primarily triads of F, A, and C, with some variations in voicing and the inclusion of a D note. The left hand plays a continuous eighth-note accompaniment pattern, starting on G and moving upwards.

24

System 2 (Measures 24-26): The right hand continues with chords, including a whole-note chord in measure 24. The left hand maintains the eighth-note accompaniment pattern.

27

System 3 (Measures 27-29): The right hand introduces sixteenth-note runs in measure 27, followed by more chords. The left hand continues the eighth-note accompaniment.

30

System 4 (Measures 30-32): The right hand features rapid sixteenth-note runs throughout the system. The left hand continues the eighth-note accompaniment.

33

System 5 (Measures 33-35): The right hand continues with sixteenth-note runs. The left hand includes an 8va (octave up) marking under the first measure and continues the eighth-note accompaniment.

36

Measures 36-38 of a musical score in B-flat major. Measure 36 features a rapid sixteenth-note arpeggiated figure in the right hand and a steady eighth-note bass line in the left hand. Measure 37 continues the arpeggiated pattern in the right hand while the left hand plays a descending eighth-note scale. Measure 38 concludes with a final chord in the right hand and a sustained bass note in the left hand.

39

Measure 39 of the musical score. The right hand contains a whole rest, while the left hand plays a sustained bass note with a fermata, indicating a final or sustained harmonic.