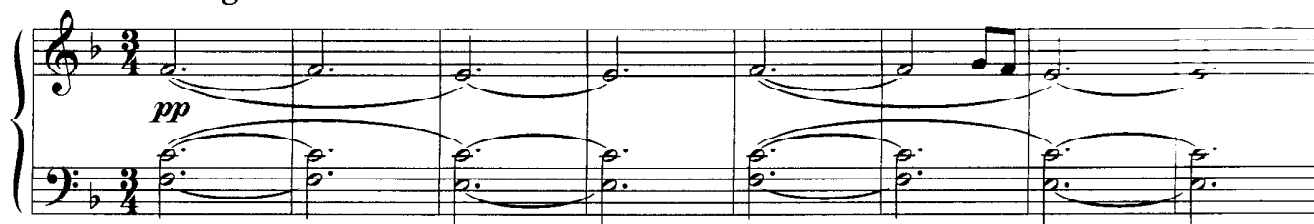


Melodia africana IV

Adagio



1 C.



Andante con moto



35

System 1 (Measures 35-40): Treble clef contains a continuous eighth-note melody. Bass clef contains a steady eighth-note accompaniment. Key signature has one flat.

41

System 2 (Measures 41-46): Treble clef contains a continuous eighth-note melody. Bass clef contains a steady eighth-note accompaniment. Key signature has one flat.

47

System 3 (Measures 47-52): Treble clef contains a melody with a triplet of eighth notes marked *mf* and a triplet of eighth notes at the end. Bass clef contains a steady eighth-note accompaniment. Key signature has one flat.

53

System 4 (Measures 53-58): Treble clef contains a melody with a triplet of eighth notes and a triplet of eighth notes. Bass clef contains a steady eighth-note accompaniment. Key signature has one flat.

59

System 5 (Measures 59-64): Treble clef contains a melody with a triplet of eighth notes and a triplet of eighth notes. Bass clef contains a steady eighth-note accompaniment. Key signature has one flat.

65

System 6 (Measures 65-70): Treble clef contains a melody with a triplet of eighth notes and a triplet of eighth notes. Bass clef contains a steady eighth-note accompaniment. Key signature has one flat.

71

71 72 73 74 75 76

77

77 78 79 80 81 82

83

83 84 85 86 87 88

89

89 90 91 92 93 94 95

pp *p*

3 C.

96

96 97 98 99 100 101

102

102 103 104 105 106 107

108

3

114

3

120

3

126

mf

132

p

138

pp un po' esitando

144

150

156

Allegro deciso

mf

162

168

174

f

impetuoso

180

This system contains measures 180 through 185. The right hand features a melodic line with eighth-note runs and slurs, while the left hand provides a steady eighth-note accompaniment. The key signature has one flat (B-flat).

186

This system contains measures 186 through 191. The musical texture continues with eighth-note patterns in both hands. A crescendo hairpin is visible in the right hand towards the end of the system.

192

mf intenso e cantabile

This system contains measures 192 through 197. The tempo and mood change to 'intenso e cantabile' at measure 192. The right hand now plays dotted half notes, and the left hand continues with eighth notes.

198

This system contains measures 198 through 203. The musical notation remains consistent with the previous system, featuring eighth-note accompaniment and dotted half notes in the right hand.

204

This system contains measures 204 through 209. The musical texture is maintained with eighth-note accompaniment and dotted half notes in the right hand.

210

This system contains measures 210 through 215. The musical notation continues with eighth-note accompaniment and dotted half notes in the right hand.

216

217 218 219 220 221

222

ff travolgente

223 224 225 226 227

228

229 230 231 232 233

234

235 236 237 238 239

240

ff

241 242 243 244 245

246

dim.

Ped. _____

252

pp

1 C.

Ped. _____

258

264

allargando *a tempo*

mf

Ped. _____ 3 C.

270

276

3

282

p dolce

1 C.

288

3

294

3

300

allarg. a tempo

3

306

314

321

pp

328

in trasparenza

335

rall

allargando molto

ppp