

Wreck of the Day

Words and Music by
Anna Nalick

Slowly, in 2

Chord diagrams: C, G, B+, Em

The piano introduction is in 2/4 time, marked *mp*. It features a treble and bass staff. The bass line consists of a steady eighth-note pattern: G2, A2, B2, C3, D3, E3, F#3, G3. The treble staff has whole rests for the first three measures, followed by a melodic phrase in the fourth measure: G4 (quarter), A4 (quarter), B4 (quarter), C5 (half).

Chord diagrams: C, G, B+

The first line of the song features a vocal melody in the treble staff and piano accompaniment in the bass staff. The tempo remains 'Slowly, in 2'. The lyrics are: 'Driv - ing a - way = from the wreck = of the day, = and the light's = al - ways red in the rear -'.

Driv - ing a - way = from the wreck = of the day, = and the light's = al - ways red in the rear -
Driv - ing a - way = from the wreck = of the day, = and I'm think - ing 'bout call - ing on Je -

Chord diagrams: C, G, B+

The piano accompaniment continues with the same eighth-note bass line. The treble staff provides harmonic support with chords and single notes. The lyrics are: 'Driv - ing a - way = from the wreck = of the day, = and I'm think - ing 'bout call - ing on Je -'.

Chord diagrams: Em, C, G

The third line of the song features a vocal melody in the treble staff and piano accompaniment in the bass staff. The tempo remains 'Slowly, in 2'. The lyrics are: 'view, sus, Des - p'rate - ly close = to a cof - fin of hope, - I'd cheat'.

view, sus, 'Cause love does - n't hurt = so I know, - I'm not fall - ing in

The piano accompaniment continues with the same eighth-note bass line. The treble staff provides harmonic support with chords and single notes. The lyrics are: 'view, sus, 'Cause love does - n't hurt = so I know, - I'm not fall - ing in'.

B+ **Em** **C**

des - ti - ny just to be near you. And if this is
love. I'm just fall - ing to piec - es.

mf

B+ **Em** **G+/D#** **G/D** **C#m7b5** **C**

giv-ing up, then I'm giv-ing up. If this is

B+ **Em** **G+/D#** **G/D** **C#m7b5**

giv-ing up, then I'm giv-ing up, giv-ing up on

m *m* *W* *W*

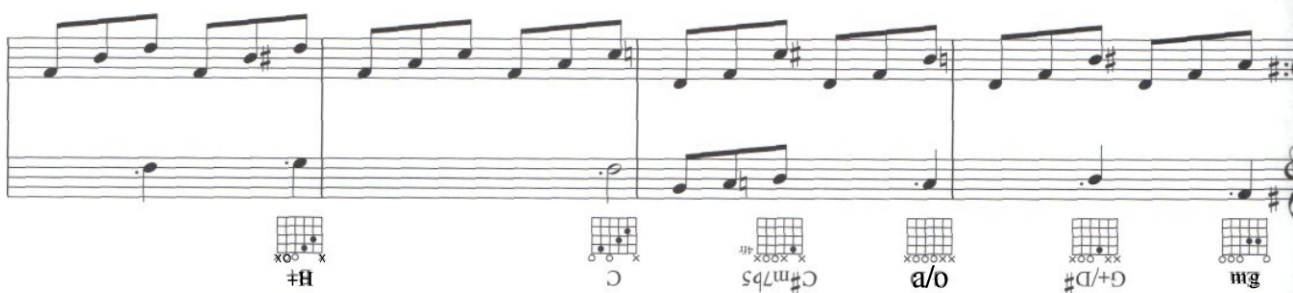
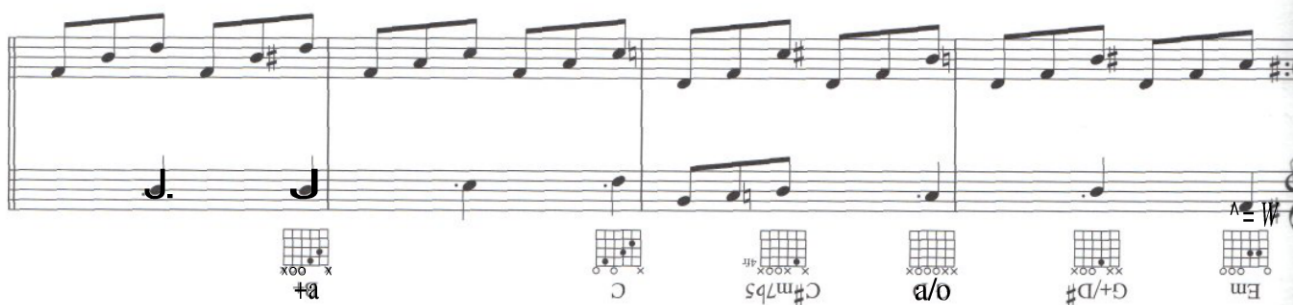
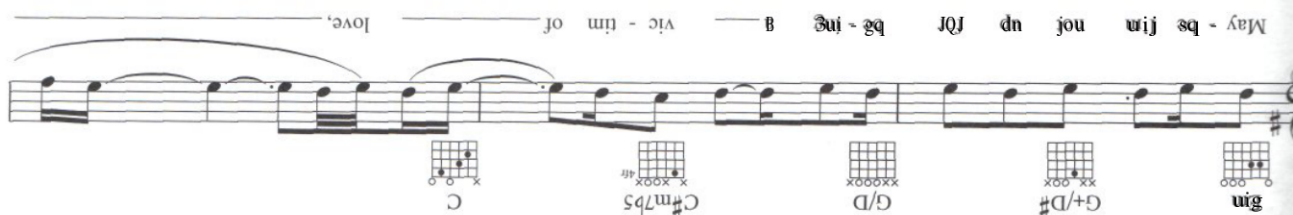
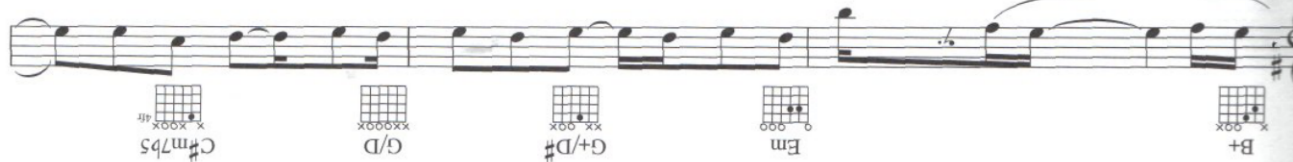
C **C#°** **D**

love, on love.

3rd time to Coda



When all my re - sis - tance will be - lieve -



Chord diagrams: C, B+, C

nough. Ah,

Chord diagrams: G, C, G, C

mm.

Chord diagrams: C#°, D

Chord diagrams: C, G, B+

Driv - ing a - way - from the wreck - of the day, - and it's fi - nal - ly qui - et in my -

mp

Em C G

— head. Driv - ing a - lone, I'm fi - nal - ly on my way

B+ Em D.S. al Coda

home to the com - fort of my bed — And if

Coda Em G+/D#

G/D C#m7b5 C B+

Em G+/D# G/D C#m7b5 C G