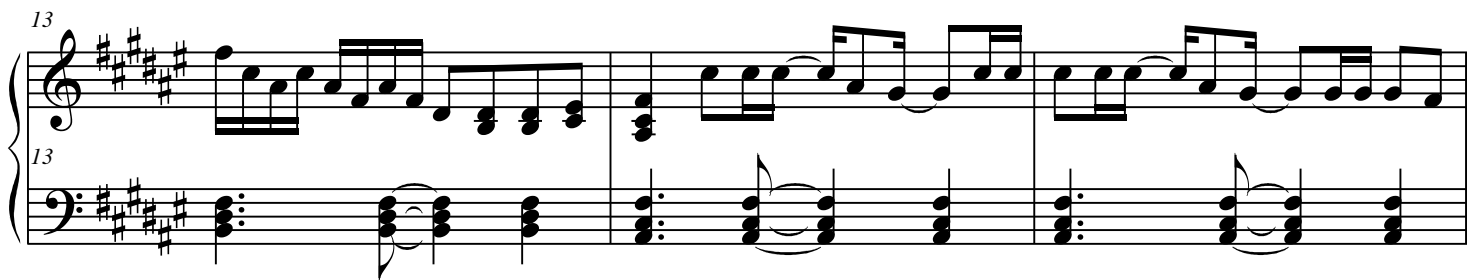
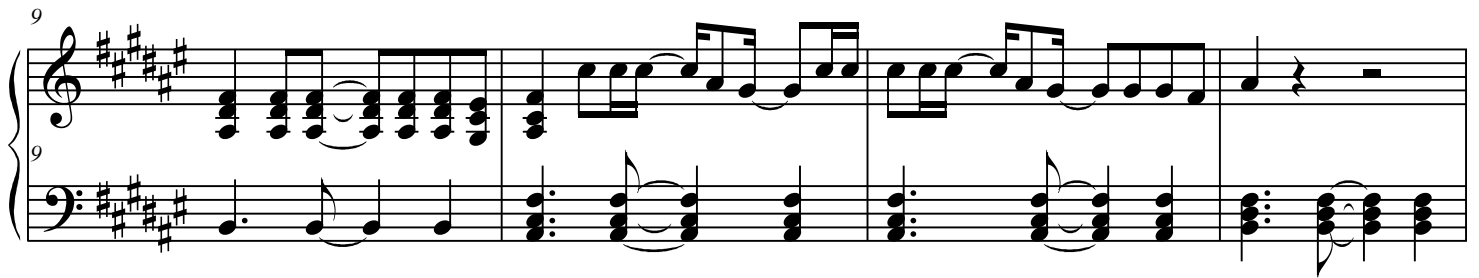
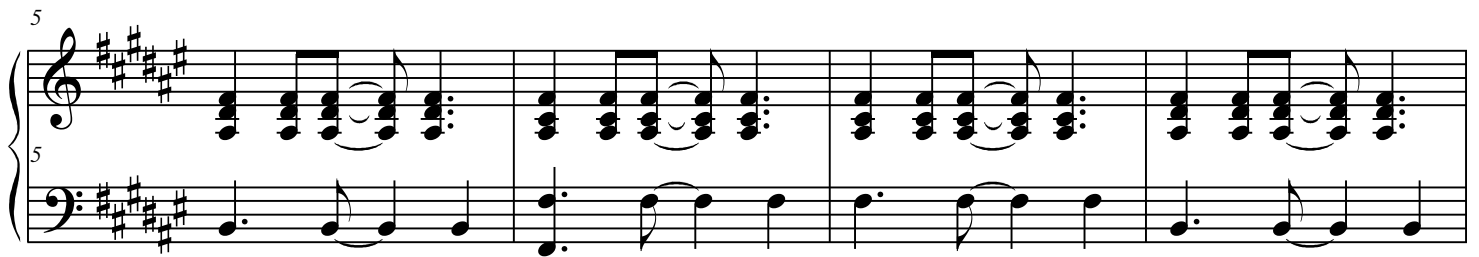
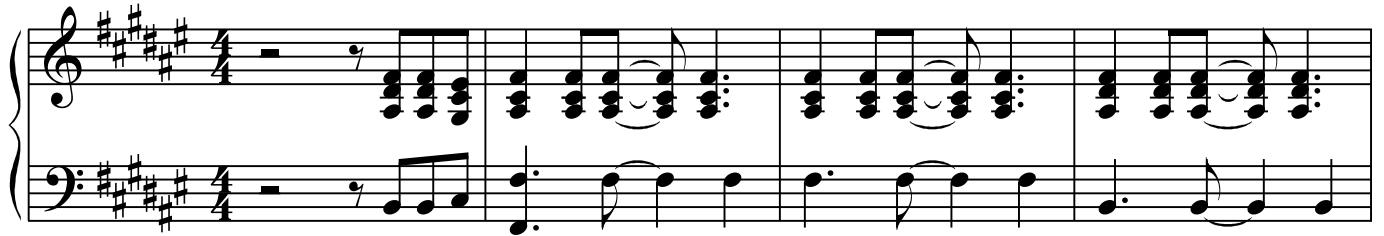


# Jay Z & Alicia Keys - Empire State Of Mind



16

16

This system contains measures 16, 17, and 18. The treble clef staff begins with a whole rest in measure 16, followed by eighth-note runs in measures 17 and 18. The bass clef staff features a steady accompaniment of chords, with some notes beamed together in measures 17 and 18.

19

19

This system contains measures 19, 20, and 21. The treble clef staff has eighth-note runs in measure 19, a whole rest in measure 20, and another eighth-note run in measure 21. The bass clef staff continues the chordal accompaniment, with some notes beamed together in measures 20 and 21.

22

22

This system contains measures 22, 23, and 24. The treble clef staff features eighth-note runs in measures 22 and 23, followed by a whole rest in measure 24. The bass clef staff maintains the chordal accompaniment, with some notes beamed together in measures 23 and 24.

25

25

This system contains measures 25, 26, and 27. The treble clef staff has eighth-note runs in measures 25 and 26, followed by a continuous eighth-note run in measure 27. The bass clef staff continues the chordal accompaniment, with some notes beamed together in measures 26 and 27.

28

28

This system contains measures 28, 29, 30, and 31. The treble clef staff begins with a half note in measure 28, followed by eighth-note runs in measures 29 and 30, and a final eighth-note run in measure 31. The bass clef staff continues the chordal accompaniment, with some notes beamed together in measures 29 and 30.

32

32

36

36

40

40

43

43

46

46

49

49

This system contains measures 49, 50, and 51. The key signature is D major (two sharps). The melody in the right hand features eighth-note runs and quarter notes, while the left hand provides a harmonic accompaniment with chords and moving bass lines.

52

52

This system contains measures 52, 53, and 54. The melody continues with eighth-note patterns and rests. The bass line consists of chords and single notes, maintaining the harmonic structure.

55

55

This system contains measures 55, 56, 57, and 58. The right hand has a more active melody with eighth-note runs. The left hand continues with a steady accompaniment of chords and moving bass notes.

59

59

This system contains measures 59, 60, 61, and 62. The melody in the right hand features a mix of eighth and quarter notes. The left hand provides a consistent harmonic support.

63

63

This system contains measures 63, 64, and 65. The right hand melody includes eighth-note runs and quarter notes. The left hand accompaniment remains consistent with the previous systems.

67

67

This system contains measures 67 through 70. The treble clef staff features a melodic line with eighth and sixteenth notes, including some beamed sixteenth notes. The bass clef staff provides a harmonic accompaniment with chords and single notes. The key signature is three sharps (F#, C#, G#).

71

71

This system contains measures 71 through 74. The treble clef staff continues the melodic line with various note values and rests. The bass clef staff features a more active accompaniment with many beamed eighth notes. The key signature remains three sharps.

75

75

This system contains measures 75 through 78. The treble clef staff shows a continuation of the melody with some longer note values. The bass clef staff maintains the accompaniment pattern with chords and moving lines. The key signature is three sharps.

79

79

This system contains measures 79 through 82, which is the final system on this page. The treble clef staff concludes the melodic phrase. The bass clef staff provides the final accompaniment for these measures. The key signature is three sharps.