

JANIE'S GOT A GUN

Words and Music by STEVEN TYLER
and TOM HAMILTON

Moderate Rock

F(no3rd)



G(no3rd)



A \flat (no3rd)



B \flat (no3rd)



E \flat (no3rd)



Dum, Dum, Dum, Hon-ey, what have you done? Dum, Dum, Dum it's the

mf

1 F(no3rd) 2 F G

sound of my gun. sound, it's the sound. Nyah, nyah,

B \flat F G C 1 Csus

nyah. Nyah, nyah, nyah.

2 C Csus F Gm7 Csus

Ja - nie's got a gun.

F Gm7 Csus

Ja - nie's got a gun.

Her
Her
Her

F Gm7 Csus F Gm7 Csus

whole world's come un - done — from look - in' straight at the sun.
 dog day's just be - gun. — Now ev - 'ry - bod - y is on the run.
 dog day's just be - gun. — Now ev - 'ry - bod - y is on the run.

F Bb C

What did her dad - dy do?
 Tell me now it's un - true.
 What did her dad - dy do? It's

F Bb C

What did he put you through? They said when
 What did her dad - dy do? He jacked a
 Ja - nie's last I. O. U. She had to

Dm(add9) Bb(add#11)

Ja - nie was ar - rest - ed they found him un - der - neath a train.
 lit - tle bit - ty ba - by. The man has got to be in - sane.
 take him down eas - y and put a bul - let in his brain.

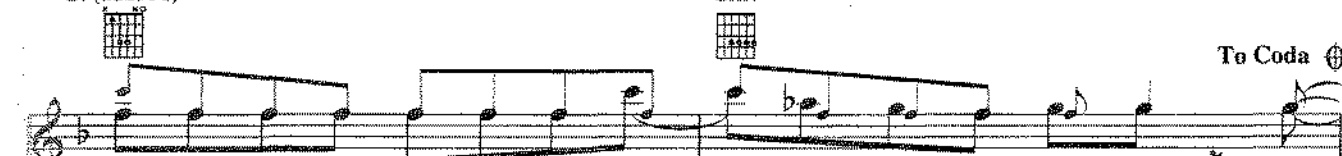
F F(no3rd)Eb(no3rd)/F Ab(no3rd)/F Eb(no3rd)/F F(no3rd) Dm(add9)

But man, he had it com - in'. Now that
 They say the spell that he was un - der, the
 She said 'cause no - bod - y be - lieves me. The

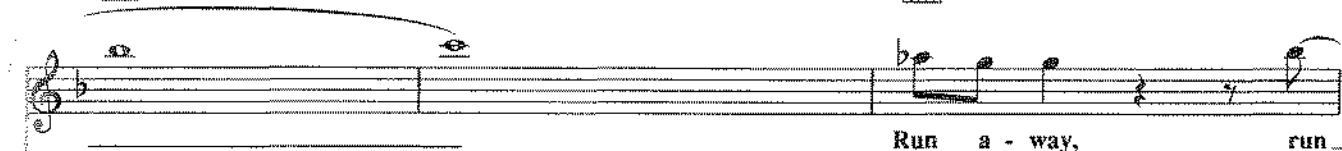
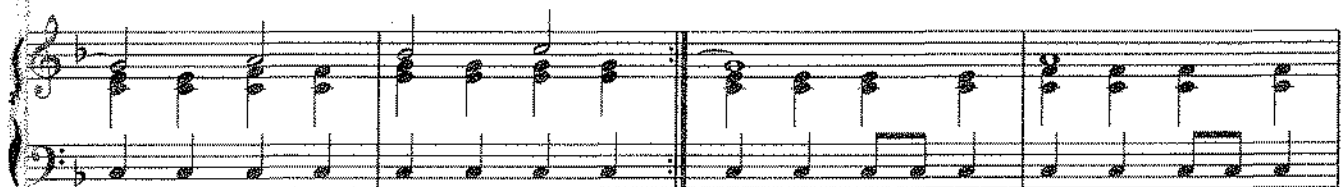
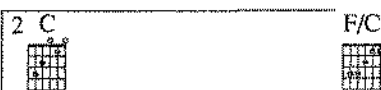
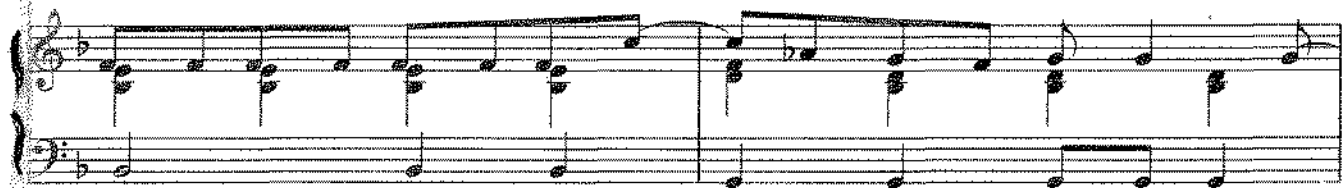
Bb(add#11)

Gm7

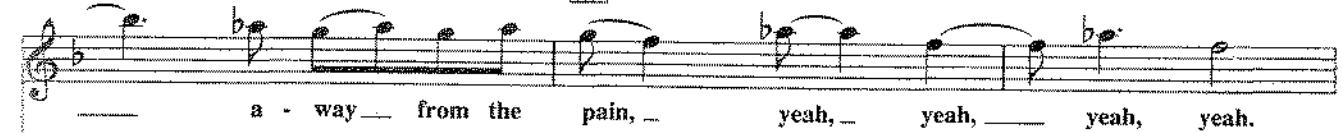
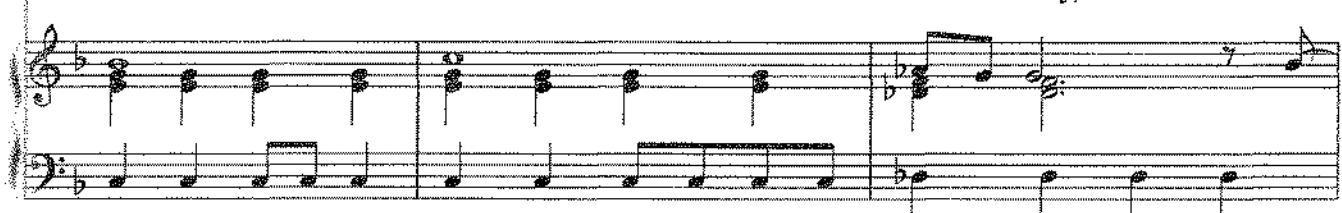
To Coda



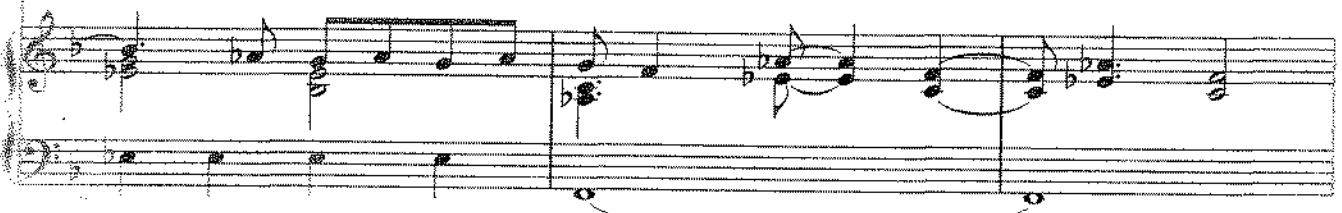
Ja - nie's got a gun she ain't nev - er gon - na be the same. —
 light - ning and the thun - der knew that some - one had to stop the rain. —
 man was such a sleeze. He ain't nev - er gon - na be the same. —



Run a - way, run



a - way from the pain, yeah, yeah, yeah, yeah.



Chord diagrams: D^b, E^b, Fm, E^bno3

Run a - way, run a - way from the pain, yeah, yeah, yeah.

Chord diagrams: Fm7, D^b, E^b

yeah, yeah, yeah, yeah. Run a - way, run a - way,

Chord diagrams: B^bm, Csus

run, run a - way.

Chord diagrams: F, Gm7, Csus

Ja - nie's got a gun.

D.S. al Coda

Chord diagram: C

CODA

F/C



C7



Musical notation system 1: Treble and bass staves. Treble staff has a whole note chord F/C. Bass staff has a whole note chord C7. A slur connects the two staves.

D \flat E \flat 

Fm7



Musical notation system 2: Treble and bass staves. Treble staff has a melody line with lyrics: "Run a - way, run a - way from the pain, yeah, yeah,". Bass staff has a bass line. A slur connects the two staves.

D \flat E \flat 

Musical notation system 3: Treble and bass staves. Treble staff has a melody line with lyrics: "yeah, yeah, yeah. Run a - way, run a - way from the". Bass staff has a bass line. A slur connects the two staves.




Fm

E \flat (no3rd)/F

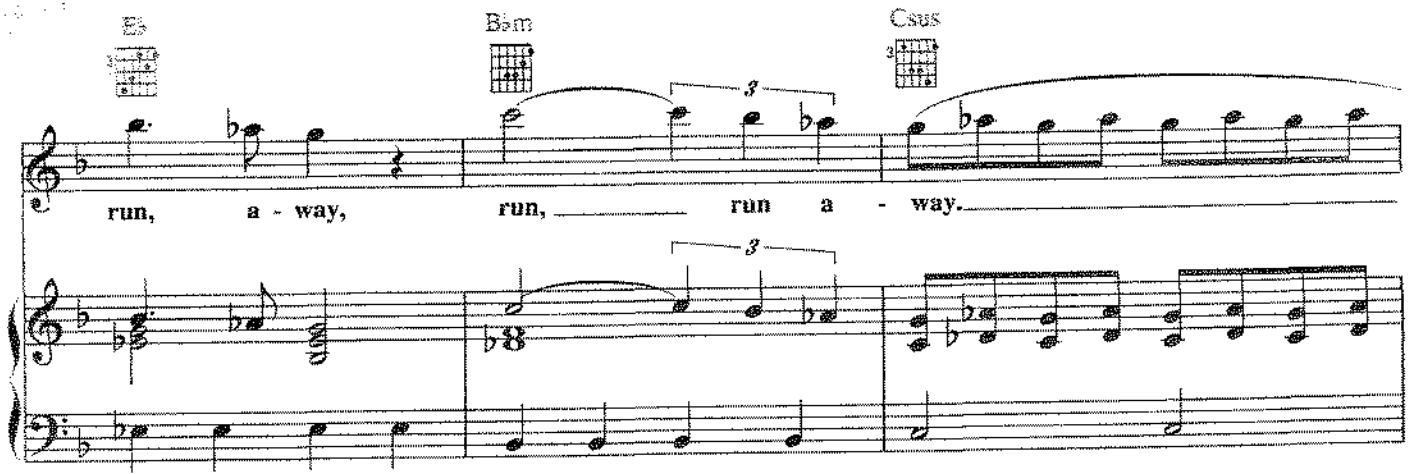
Fm7




D \flat 

Musical notation system 4: Treble and bass staves. Treble staff has a melody line with lyrics: "pain, yeah, yeah, yeah, yeah, yeah, yeah, yeah. Run a - way,". Bass staff has a bass line. A slur connects the two staves.

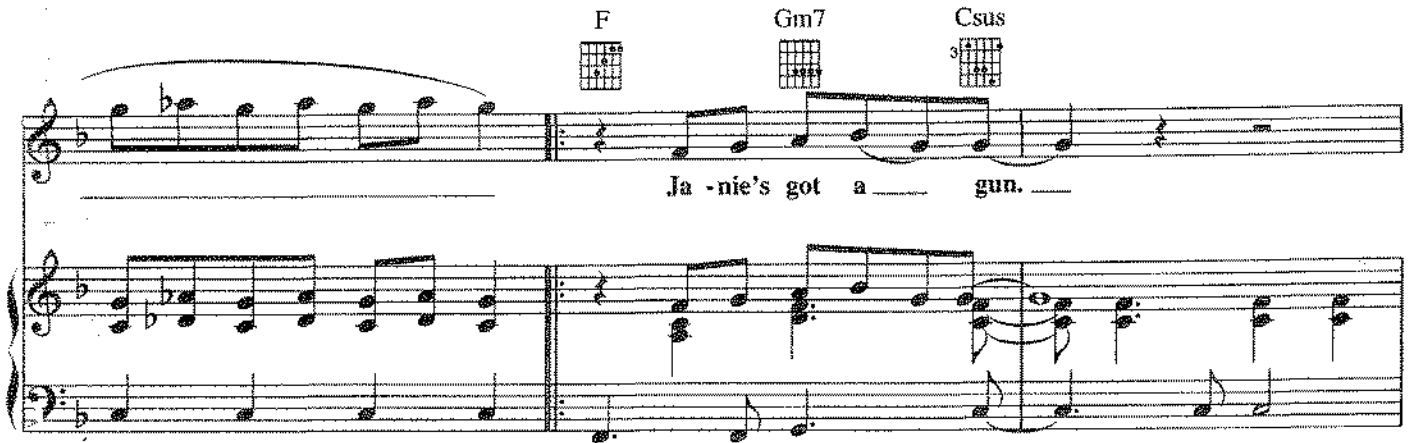




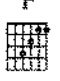
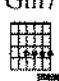
run, a - way, run, run a - way.








Ja - nie's got a gun.



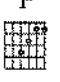

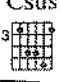







Ja - nie's got a gun. Ja - nie's got a gun.



Ev - 'ry - bod - y is on the run.

Repeat ad lib. and Fade

