

# 2. AUX CYPRÈS DE LA VILLA D'ESTE DEN ZYPRESSEN DER VILLA D'ESTE

## Thrénodie (I)

Andante

mf

f

sempre legato

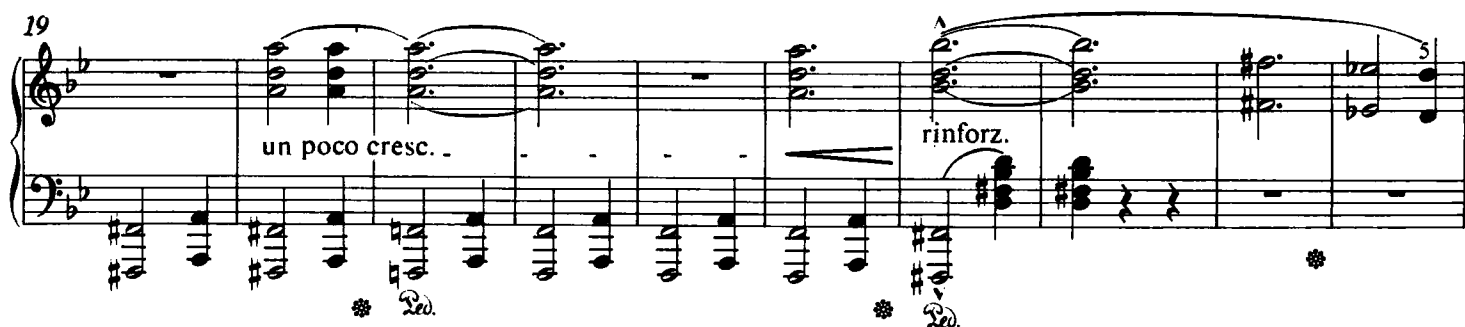


dim. - - - p



un poco cresc. -

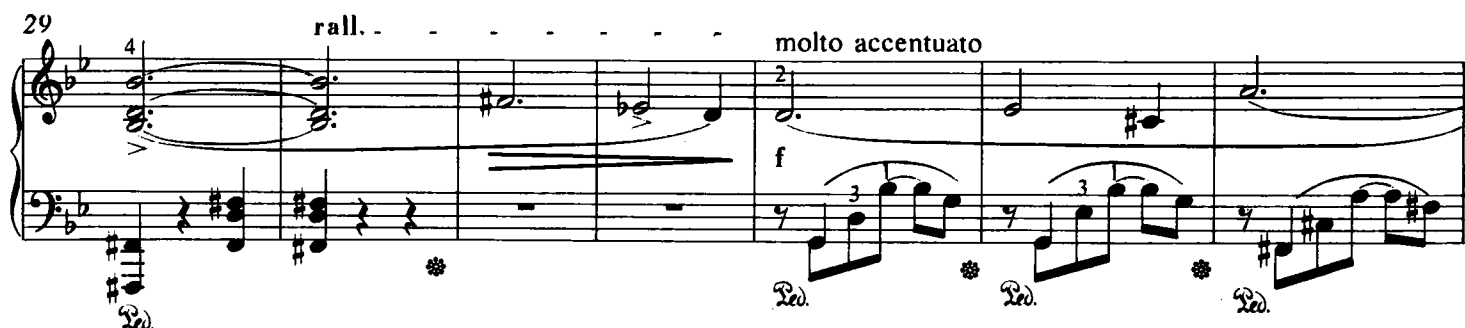
rinforz.



rall. - - -

molto accentuato

f



cresc. -



42

ff appassionato

ff

Reo.

49

un poco dim.

rinforz.

rinforz.

Reo.

56

un poco rall.

v

Reo.

63

tranquillo

p sotto voce

Reo.

69

Reo.

poco a poco accelerando - - -

Measures 75-80. Treble and bass staves. Treble staff has a melodic line with many sharps. Bass staff has a rhythmic accompaniment. Rehearsal marks (Lied.) are present at measures 75, 76, 77, 78, 79, and 80. A crescendo marking 'cresc.' is at measure 80. Performance instructions 'poco a poco' and 'cresc.' are written above the treble staff at measures 79 and 80.

Measures 81-86. Treble and bass staves. Treble staff continues the melodic line. Bass staff continues the rhythmic accompaniment. Rehearsal marks (Lied.) are present at measures 81, 82, 83, 84, 85, and 86.

Measures 87-92. Treble and bass staves. Treble staff has a melodic line with many sharps. Bass staff has a rhythmic accompaniment. Rehearsal marks (Lied.) are present at measures 87, 88, 89, 90, 91, and 92. Performance instructions 'Più agitato' and 'sempre legato' are written above the treble staff at measures 87 and 88. A forte marking 'f' is at measure 87. A tremolo marking 'tremolando' is at measure 90. A marcato marking 'marcato' is at measures 88 and 92. A dotted line with the number 8 is at measure 90.

Measures 93-98. Treble and bass staves. Treble staff has a melodic line with many sharps. Bass staff has a rhythmic accompaniment. Rehearsal marks (Lied.) are present at measures 93, 94, 95, 96, 97, and 98. A tremolo marking 'tremolando' is at measure 93. A dotted line with the number 8 is at measure 93.

Measures 99-104. Treble and bass staves. Treble staff has a melodic line with many sharps. Bass staff has a rhythmic accompaniment. Rehearsal marks (Lied.) are present at measures 99, 100, 101, 102, 103, and 104. A crescendo marking 'cresc.' is at measure 99. A dotted line with the number 8 is at measure 99.

105

più cresc.

un poco accel.

fff

tremolando

8

Reo.

112

rinforz.

Ossia

ff legato

8

Reo.

119

8

Reo.

124

un poco rall.

molto dim.

pp

8

Reo.

131

*f appassionato*

*un poco dim.*

138

*rinforz.*

146

*mp*

156

*mp*

*cresc.*

166

*ff*

175

*p senza agitazione, e molto legato*

183

un poco più marcato (ma poco)

Rev. \* Rev. \* Rev. \* Rev. \* Rev. \*

191

p  
ten.

ten.

ten.

ten.

ten.

ten.

Rev.

Rev.

Rev.

\* Rev. \* Rev. \*

196

cresc.

Rev. \* Rev. \*

201

f

dim.

Rev. \*

207

mf

Rev. \* Rev. \* Rev. \* Rev. \* Rev. \*