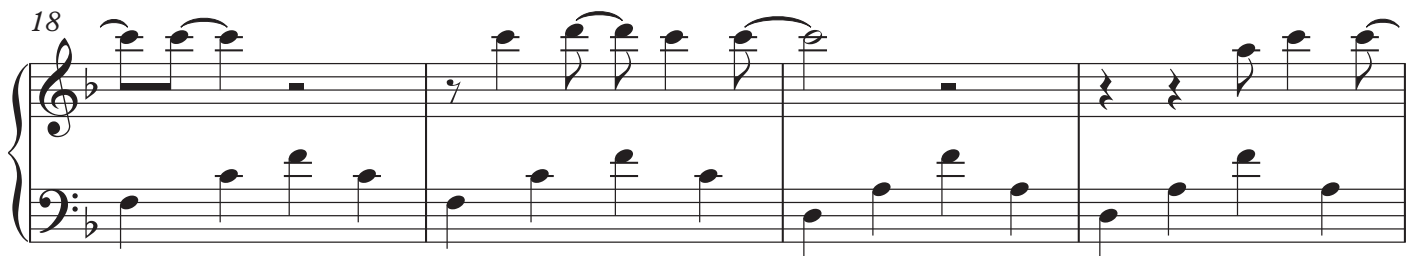
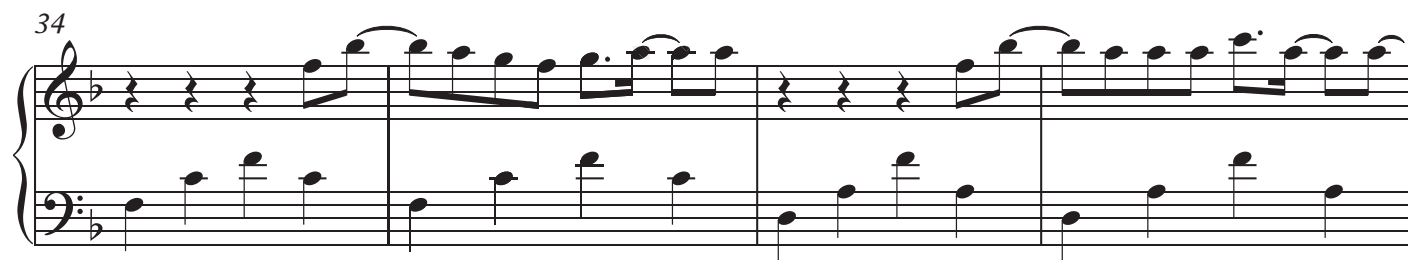
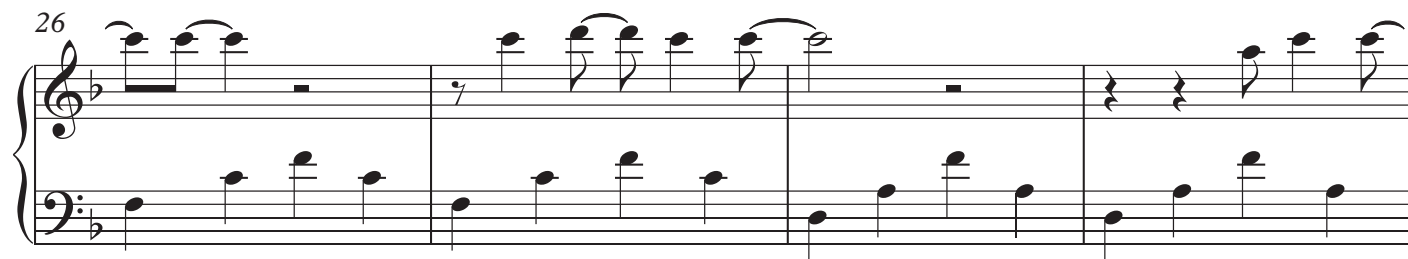


Tonight I'm Getting Over You

Carly Rae Jepsen





46

Measures 46-49 of a musical score in B-flat major. The right hand features a melodic line with eighth and sixteenth notes, while the left hand provides a steady bass line of eighth notes. Measure 49 ends with a repeat sign.

50

Measures 50-53 of a musical score in B-flat major. The right hand continues the melodic development with various note values, and the left hand maintains the eighth-note bass line. Measure 53 ends with a repeat sign.

54

Measures 54-57 of a musical score in B-flat major. The right hand introduces a more complex texture with triplets and sixteenth-note patterns. The left hand continues the eighth-note bass line. Measure 57 ends with a repeat sign.

58

Measures 58-61 of a musical score in B-flat major. The right hand features a melodic line with eighth and sixteenth notes, and the left hand continues the eighth-note bass line. Measure 61 ends with a repeat sign.

62

Measures 62-65 of a musical score in B-flat major. The right hand has a more active melodic line with many beamed sixteenth notes. The left hand continues the eighth-note bass line. Measure 65 ends with a repeat sign.

66

Measures 66-69 of a musical score in B-flat major. The right hand features a melodic line with eighth and sixteenth notes, and the left hand continues the eighth-note bass line. Measure 69 ends with a repeat sign.

70

Measures 70-73 of a musical score in B-flat major. The right hand features a complex melodic line with many beamed sixteenth and thirty-second notes, often in pairs. The left hand provides a steady accompaniment of eighth notes, with some chords. Measure 73 ends with a repeat sign.

74

Measures 74-77 of a musical score in B-flat major. The right hand continues with intricate melodic patterns, including some rests. The left hand maintains the eighth-note accompaniment. Measure 77 ends with a repeat sign.

78

Measures 78-81 of a musical score in B-flat major. The right hand's melody becomes more active with continuous sixteenth-note runs. The left hand's accompaniment remains consistent. Measure 81 ends with a repeat sign.

82

Measures 82-85 of a musical score in B-flat major. The right hand features a series of beamed sixteenth notes, creating a rapid melodic flow. The left hand continues with the eighth-note accompaniment. Measure 85 ends with a repeat sign.

86

Measures 86-89 of a musical score in B-flat major. The right hand has a more varied melodic line with some longer notes and beamed sixteenths. The left hand's accompaniment is steady. Measure 89 ends with a repeat sign.

90

Measures 90-93 of a musical score in B-flat major. The right hand continues with a melodic line of beamed sixteenth notes. The left hand's accompaniment remains consistent. Measure 93 ends with a repeat sign.

94

Measures 94-97 of a musical score in B-flat major. The right hand features a complex melodic line with many beamed sixteenth and thirty-second notes, including triplets and slurs. The left hand provides a steady accompaniment of eighth notes, with some chords in measures 95 and 97.

98

Measures 98-101 of a musical score in B-flat major. Measures 98 and 100 are primarily rests in the right hand, with some chords. Measures 99 and 101 contain more active right-hand figures. The left hand continues with a consistent eighth-note accompaniment.

102

Measures 102-105 of a musical score in B-flat major. Measures 102 and 104 feature dense, fast-moving right-hand passages with many beamed notes. Measures 103 and 105 have more sparse right-hand textures. The left hand accompaniment remains consistent.

106

Measures 106-109 of a musical score in B-flat major. Measures 106 and 108 contain complex right-hand figures with slurs and ties. Measures 107 and 109 have rests in the right hand. The left hand accompaniment is consistent throughout.

110

Measures 110-113 of a musical score in B-flat major. Measures 110 and 112 feature active right-hand passages. Measures 111 and 113 have rests in the right hand. The left hand accompaniment is consistent throughout.