

Rondo a capriccio^{*)}

Op. 129

4.

7

18

19

25

^{*)} Dieses unter L. v. Beethovens Nachlasse vollendet vorgefundene Capriccio ist im Manuskript folgender Maßen betitelt: *Die Wuth über den verlorenen Groschen*. (Fußnote der Original-Ausgabe von 1828). Vergleiche den Revisionsbericht.

29

Measures 29-32 of a musical score. The system consists of two staves. The upper staff is in treble clef with a key signature of one sharp (F#) and contains a melodic line with various fingerings (1, 2, 1, 2, 1, 1, 1, 1) and a *dim.* (diminuendo) marking in measure 32. The lower staff is in bass clef with a key signature of one sharp (F#) and contains a bass line with fingerings (3, 2, 5, 3, 1, 3) and rests.

33

Measures 33-38 of a musical score. The system consists of two staves. The upper staff is in treble clef with a key signature of one sharp (F#) and contains a melodic line with various fingerings (2, 1, 3, 1, 2, 3, 1, 3, 1, 3, 1, 2) and a *p* (piano) marking in measure 33. The lower staff is in bass clef with a key signature of one sharp (F#) and contains a bass line with fingerings (3, 2, 5, 3, 1, 3) and rests.

39

Measures 39-44 of a musical score. The system consists of two staves. The upper staff is in treble clef with a key signature of one sharp (F#) and contains a melodic line with various fingerings (3, 2, 1, 1, 1, 1, 1, 1, 1, 1, 1, 1) and a *p* (piano) marking in measure 39. The lower staff is in bass clef with a key signature of one sharp (F#) and contains a bass line with fingerings (3, 2, 5, 3, 1, 3) and rests.

45

Measures 45-50 of a musical score. The system consists of two staves. The upper staff is in treble clef with a key signature of one sharp (F#) and contains a melodic line with various fingerings (5, 1, 4, 2, 2, 2, 2, 2, 2, 2, 2, 2) and a *f* (forte) marking in measure 45. The lower staff is in bass clef with a key signature of one sharp (F#) and contains a bass line with fingerings (3, 2, 5, 3, 1, 3) and rests.

51

Measures 51-56 of a musical score. The system consists of two staves. The upper staff is in treble clef with a key signature of one sharp (F#) and contains a melodic line with various fingerings (1, 2, 1, 2, 1, 1, 1, 1, 1, 1, 1, 1) and a *f* (forte) marking in measure 51. The lower staff is in bass clef with a key signature of one sharp (F#) and contains a bass line with fingerings (3, 2, 5, 3, 1, 3) and rests.

57

58

68

78

80

87

Autograph:

93

cresc.

f

99

105

f

113

p

fp

121

p

cresc.

128

134

Measures 134-139. Treble staff: 5, 1, 3, 5, 1, 4. Bass staff: 5, 4, 5, 4, 5, 5, 4.

140

Measures 140-145. Treble staff: 2, 2, 2, 2, 2, 2. Bass staff: 3, 2, 4, 2, 4, 2, 4, 2.

146

Measures 146-151. Treble staff: 1, 4, 1, 3. Bass staff: 3, 5, 2, 5, 2. Dynamic: *p*.

152

Measures 152-157. Treble staff: 4, 2, 3, 4, 5, 2. Bass staff: 4, 3, 5, 1, 2, 5, 1, 2, 5, 8, 2, 5. Dynamic: *cresc.*

158

Measures 158-163. Treble staff: 4, 2, 5, 2, 3, 1, 3, 1, 2, 1. Bass staff: 5, 2, 5, 8, 2, 3, 2, 4, 2, 1, 4, 3. Dynamic: *dim.*, *pp*.

165

Measures 165-170. Treble staff: 1, 3, 1, 3, 1, 2, 1, 5. Bass staff: 4, 3, 1. Dynamic: *mf*.

172

Measures 172-179. The score is in G major (one sharp). Measures 172-175 feature a complex piano accompaniment with many beamed sixteenth and thirty-second notes. Measure 176 has a wavy line in the right hand and a fermata in the left hand. Measure 177 has a *cresc.* marking. Fingerings are indicated by numbers 1-5. Measure 179 includes a *f* (forte) dynamic marking.

179

Measures 180-185. The piano accompaniment continues with dense sixteenth-note patterns. The right hand has more melodic movement. Measure 185 includes a *f* (forte) dynamic marking.

185

Measures 186-191. The piano accompaniment features a series of descending and ascending sixteenth-note runs. The right hand has chords and some melodic lines. Measure 191 includes a *f* (forte) dynamic marking.

191

Measures 192-198. The piano accompaniment continues with sixteenth-note patterns. The right hand has chords and some melodic lines. Measure 198 includes a *sf* (sforzando) dynamic marking.

198

Measures 199-201. The piano accompaniment continues with sixteenth-note patterns. The right hand has chords and some melodic lines. Measure 201 includes a *sf* (sforzando) dynamic marking.

201

Measures 202-205. The piano accompaniment continues with sixteenth-note patterns. The right hand has chords and some melodic lines. Measure 205 includes a *sf* (sforzando) dynamic marking.

207

dim.

[illegible]

228

4 5 4 4 4 4 4 4

cresc.

1 2 4 2 1

2 4 5 2 5

286

4 3 4 3 5 4 5 5

cresc.

1 3

245

Exercise 245 is a 12-measure piece in 3/4 time. The melody is written in treble clef with a key signature of one sharp (F#). The bass line is mostly rests. Fingerings are indicated by numbers 1-4 above notes.

251

Measures 251-260. Treble and bass staves. Treble staff has a *dim.* marking. Fingerings are indicated by numbers 1-5. The music features complex chordal textures and melodic lines in both hands.

260

Measures 260-268. Treble and bass staves. Treble staff has a *dim.* marking. Fingerings are indicated by numbers 1-5. The music continues with complex chordal textures and melodic lines.

268

Measures 268-274. Treble and bass staves. Treble staff has a *f* marking. Fingerings are indicated by numbers 1-5. The music features complex chordal textures and melodic lines.

274

Measures 274-280. Treble and bass staves. Treble staff has a *pp* marking. Bass staff has a *leggermente* marking. Fingerings are indicated by numbers 1-5. The music features complex chordal textures and melodic lines.

280

Measures 280-286. Treble and bass staves. Treble staff has a *cresc.* marking. Fingerings are indicated by numbers 1-5. The music features complex chordal textures and melodic lines.

286

Measures 286-292. Treble and bass staves. Treble staff has a *f* marking. Bass staff has a *sf* marking. Fingerings are indicated by numbers 1-5. The music features complex chordal textures and melodic lines.

292

Measures 292-296. Treble clef, key of D major. Fingerings: 1, 2, 4, 2, 4, 1, 1, 1, 1, 2, 4. Dynamics: *sf*, *sf*, *sf*, *sf*. Bass clef: 3/5, 2/4, 1/3, 2/4.

297

Measures 297-301. Treble clef, key of D major. Fingerings: 2, 4, 1, 2, 4, 2, 4, 2, 4. Dynamics: *sf*, *sf*, *sf*, *sf*. Bass clef: 1/3, 1/3, 1/2.

302

Measures 302-306. Treble clef, key of D major. Fingerings: 1, 2, 4, 1, 2, 4, 2, 4, 2, 1, 1. Dynamics: *sf*, *sf*, *sf*, *sf*. Bass clef: 1/3, 1/2.

307

Measures 307-311. Treble clef, key of D major. Fingerings: 1, 5, 3, 4, 2, 3, 1, 1, 3, 1, 4, 1, 2, 3, 1, 3, 5. Dynamics: *ff*. Bass clef: 5/3, 5/4, 5/3, 5/3, 2, 4, 2, 4, 1, 3.

312

Measures 312-316. Treble clef, key of D major. Fingerings: 4, 2, 3, 1, 4, 2, 2, 3, 1, 3, 1, 4, 5, 4, 2, 5, 3, 2. Dynamics: *ff*. Bass clef: 5/3, 5/4, 5/3, 2, 3, 1, 3, 2, 4, 5, 3, 4.

317

Measures 317-321. Treble clef, key of D major. Fingerings: 1, 5, 3, 4, 5, 4, 2, 1, 5, 3, 2, 1, 5, 4, 2, 1, 4, 2, 5, 4, 1, 5, 4. Dynamics: *ff*. Bass clef: 2, 3, 1, 5, 3, 4, 2, 3, 1, 5, 3, 4, 2, 3, 1.

322

Measures 322-326. Treble clef, key of D major. Fingerings: 1 5 3 2, 1 4, 4 2, 5 3 2, 3 4 2, 3, 1 5 4 2. Bass clef, key of D major. Fingerings: 5, 3, 4, 2, 3, 1, 5, 3, 4.

327

Measures 327-331. Treble clef, key of D major. Fingerings: 1 5 3 2, 1 4, 3, 1 5 4 2, 1 5 4, 4, 4, 2, 5 3 2, 5 4, 1 4. Bass clef, key of D major. Fingerings: 1 2 1, 5, 3 4, 1 3 1, 5, 3 4, 2 3 1.

332

Measures 332-337. Treble clef, key of D major. Fingerings: 4, 4, 3, 4, 3, 3, 3, 2 4 2. Bass clef, key of D major. Fingerings: 1, 1, 2, 1, 3 4, 2. *f ben marcato* in measure 337.

338

Measures 338-347. Treble clef, key of D major. Fingerings: 4, 2 4 2, 4, 2 4 3, 5 4, 2 1, 5 3, 5 4, 2 1. Bass clef, key of D major. Fingerings: 4, 2 4 2, 4, 4, 2, 5, 1 2, 5, 1 8, 5, 5.

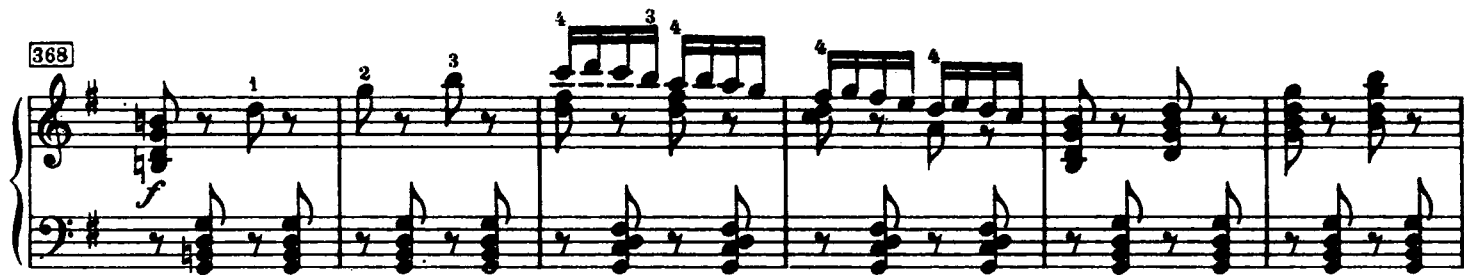
348

Measures 348-357. Treble clef, key of D major. Fingerings: 3, 5 4, 2 1, 5 3, 5 2, 5 2, 4 2, 5 2. Bass clef, key of D major. Fingerings: 5, 2, 2, 5, 5, 2, 5, 1 2, 2, 1 3, 2. *dim.* in measure 354.

358

Measures 358-367. Treble clef, key of D major. Fingerings: 5 2, 4 2, 5 3, 5 2, 5 2, 4, 5 3, 5 2. Bass clef, key of D major. Fingerings: 5, 3, 5, 2, 4, 2 1, 5, 3, 4, 2 1, 4. *p* in measure 359, *pp* in measure 364.

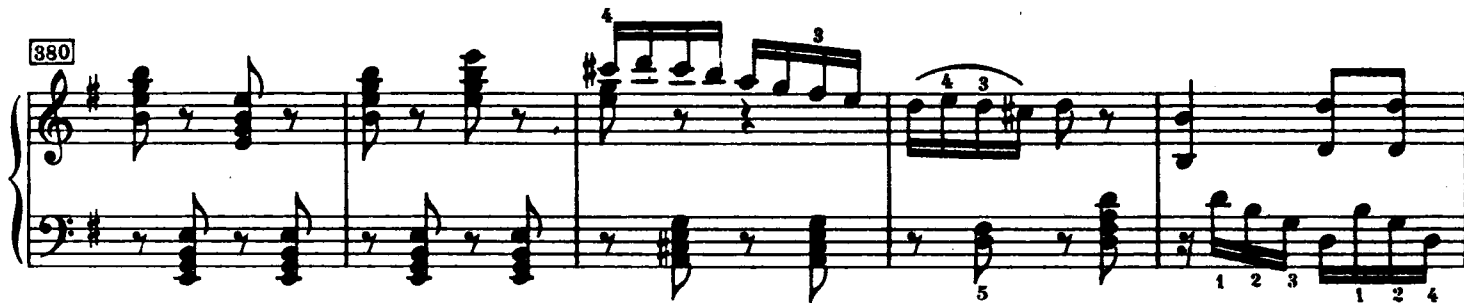
368



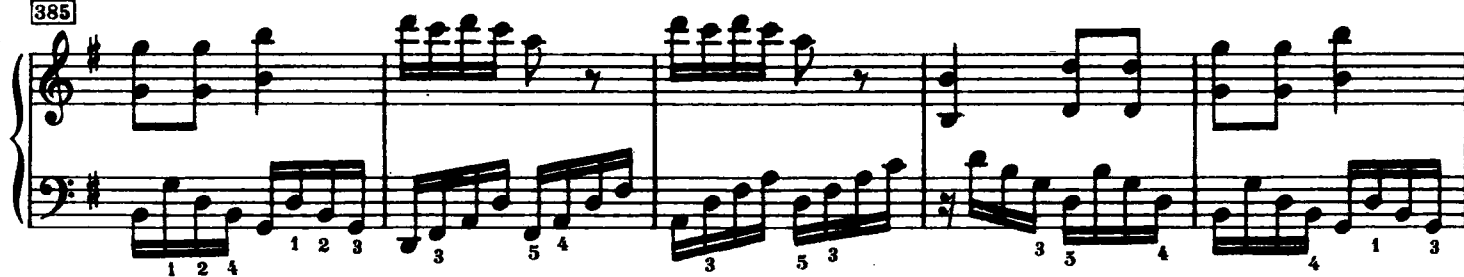
374



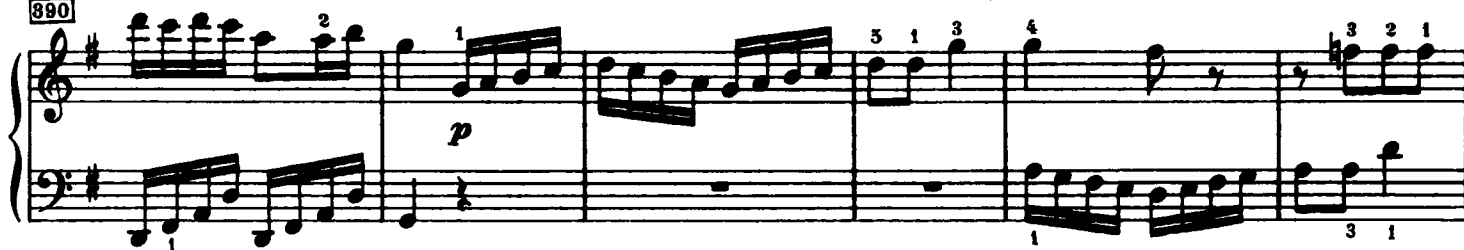
380



385



390



396



402

3 2 1 3 2 5 3 2 5 3 2 1 3 2 1 3 2 1

1 5 4 5 5 5 4 5 4

f *p*

411

3 1 2 3 1 3 1 3 4 3

5 3 4 2 3 1 2 1 5 3 4

417

cresc. *dim.*

2 3 1 2 1 4 5 3 4 2 4 2

422

p *sempre dim.*

5 4 2 5 4 2 5 4 2 5 4 2

427

pp

2 2 2 2 2

432

cresc. *f*

2 3