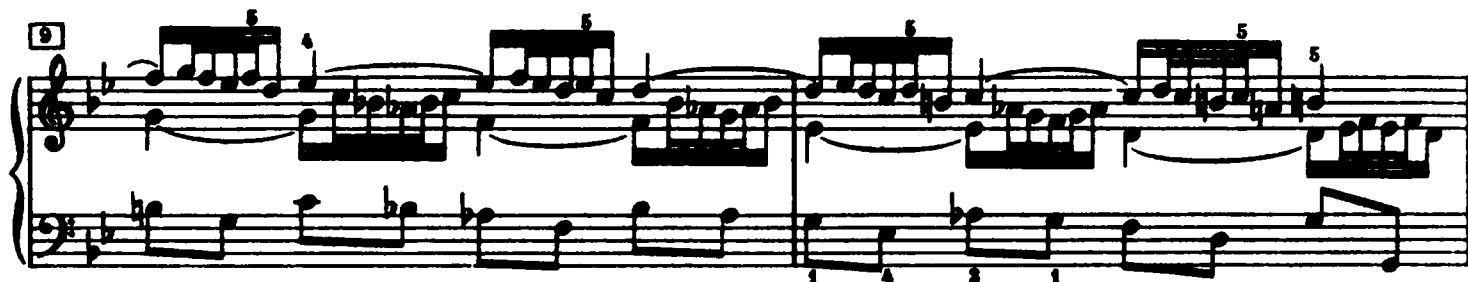
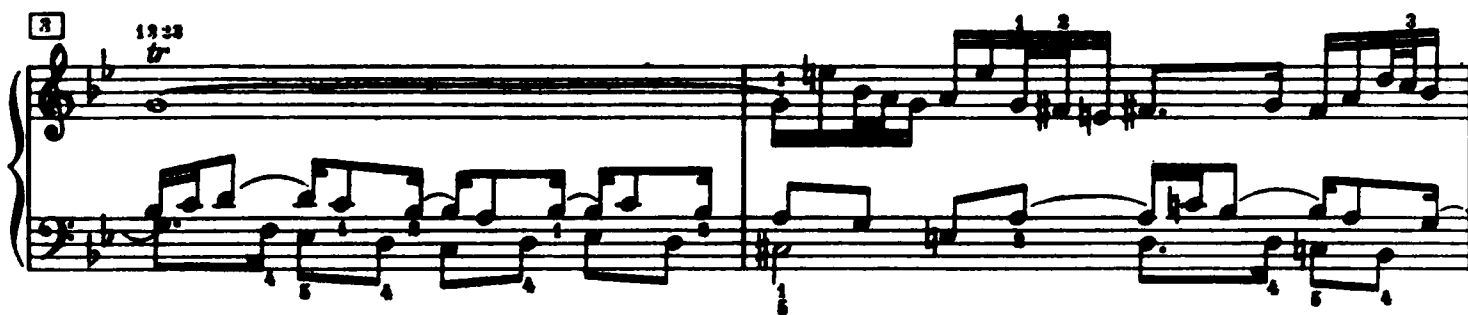


Praeludium XVI



11

Measures 11 and 12 of a musical score. Measure 11 features a treble staff with eighth-note chords and a bass staff with a trill (tr) on a low note. Measure 12 continues with similar textures, including a triplet of eighth notes in the treble and a sixteenth-note run in the bass.

13

Measures 13 and 14. Measure 13 shows a treble staff with a half-note chord and a bass staff with a sixteenth-note run. Measure 14 features a treble staff with a half-note chord and a bass staff with a sixteenth-note run.

15

Measures 15 and 16. Measure 15 features a treble staff with a half-note chord and a bass staff with a sixteenth-note run. Measure 16 continues with similar textures, including a triplet of eighth notes in the treble and a sixteenth-note run in the bass.

16

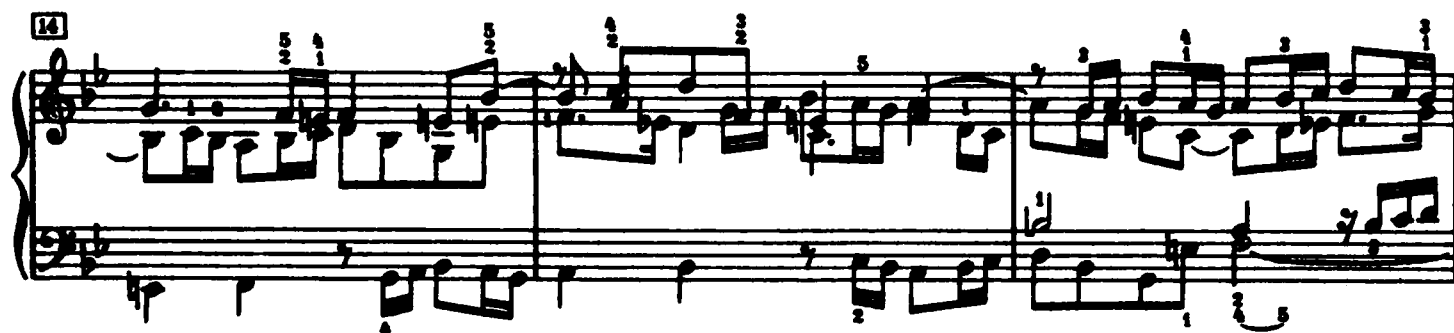
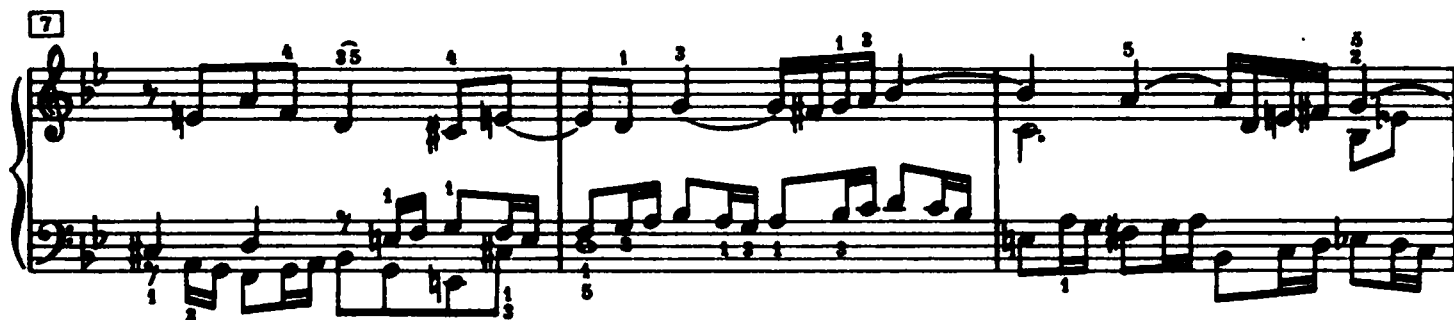
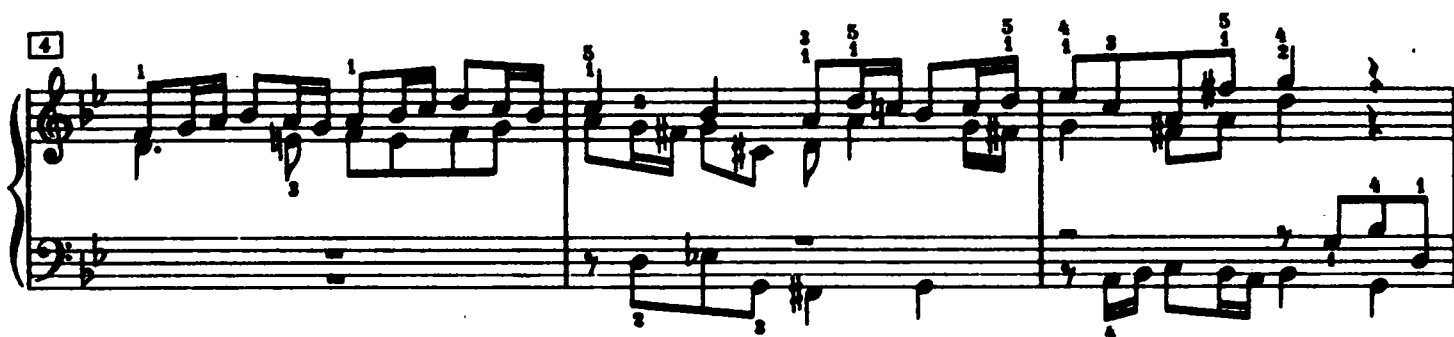
Measures 17 and 18. Measure 17 features a treble staff with a half-note chord and a bass staff with a sixteenth-note run. Measure 18 continues with similar textures, including a triplet of eighth notes in the treble and a sixteenth-note run in the bass.

18

Measures 19 and 20. Measure 19 features a treble staff with a half-note chord and a bass staff with a sixteenth-note run. Measure 20 continues with similar textures, including a triplet of eighth notes in the treble and a sixteenth-note run in the bass.

Fuga XVI

a 4 Voci



Exercise 17, measures 1-3. The score is in 3/4 time and B-flat major. Measure 1: Treble clef has a half note G4 (finger 5), a quarter note A4 (finger 5), and a quarter note B4 (finger 3). Bass clef has a half note F3 (finger 5), a quarter note G3 (finger 1), and a quarter note A3 (finger 4). Measure 2: Treble clef has a half note C5 (finger 4), a quarter note B4 (finger 1), and a quarter note A4 (finger 5). Bass clef has a half note B2 (finger 1), a quarter note C3 (finger 2), and a quarter note D3 (finger 3). Measure 3: Treble clef has a half note G4 (finger 5), a quarter note F#4 (finger 3), and a quarter note E4 (finger 5). Bass clef has a half note D3 (finger 5), a quarter note C3 (finger 1), and a quarter note B2 (finger 4).

20

5 1 5 1 2 1 5 4 3 2 1 5 7 3 1

2 3 3 1 3 2 1 2 1

28

Handwritten musical score for 'The Rose Tree'. The score is written on two staves, Treble and Bass clef, in 3/4 time. The key signature has one flat (B-flat). The melody is in the Treble staff, and the accompaniment is in the Bass staff. The piece consists of 28 measures. The notation includes various note values (quarter, eighth, sixteenth notes), rests, and fingerings. The piece ends with a double bar line and a repeat sign.