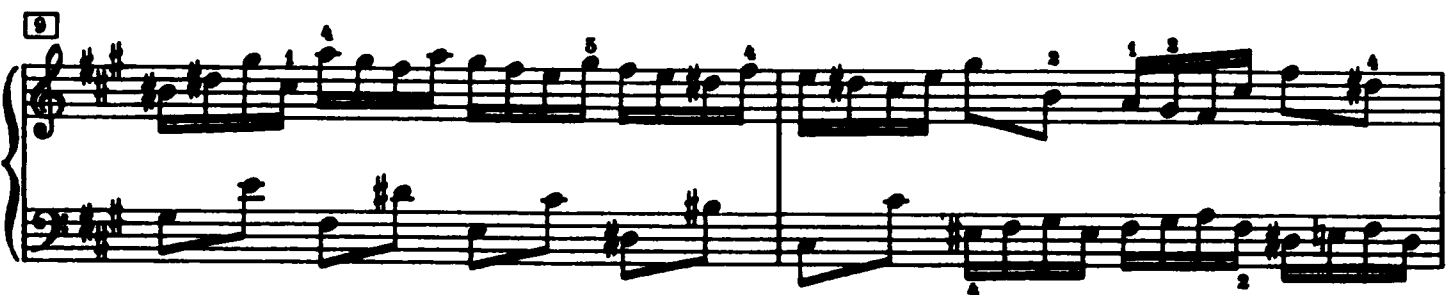
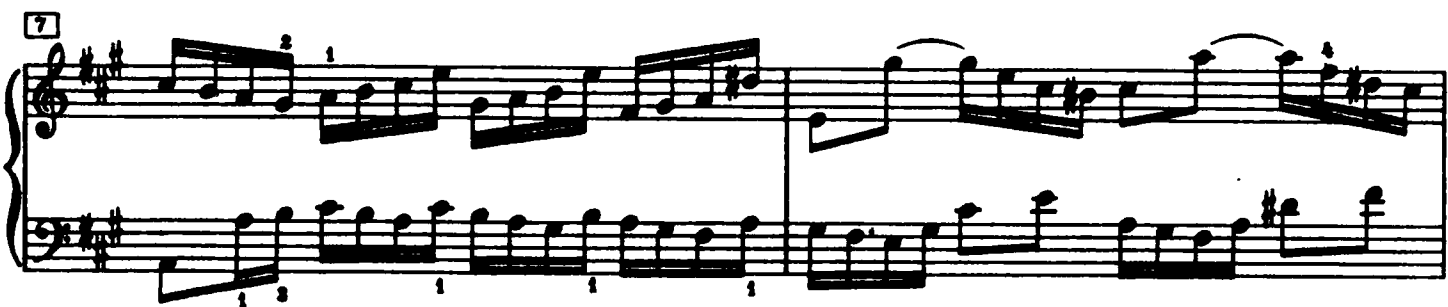
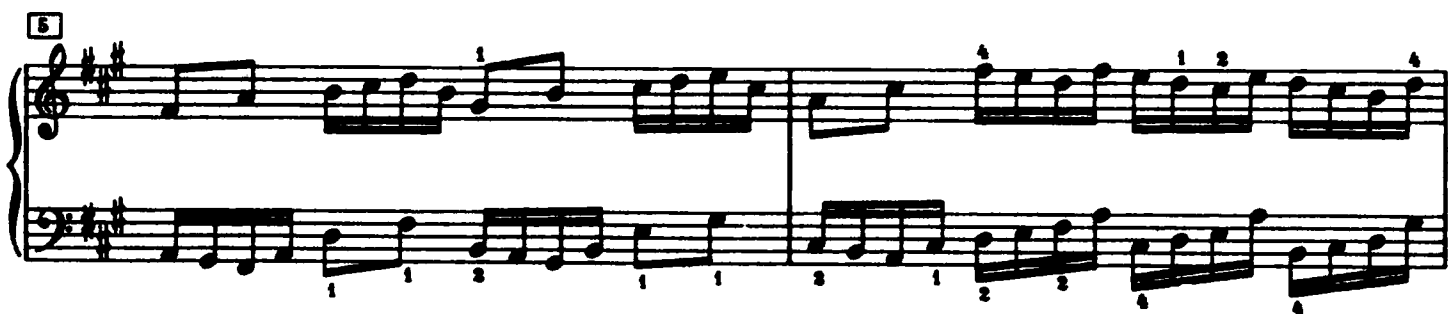


Praeludium XIV



11

14

16

18

20

22

Fuga XIV

a 4 Voci

5

8

11

15

19

21

Handwritten musical notation for system 21, measures 21-24. The system is in treble and bass clefs with a key signature of two sharps (F# and C#). It features complex fingerings and slurs. Measure numbers 21, 22, 23, and 24 are indicated at the start of each measure.

25

Handwritten musical notation for system 25, measures 25-28. The system is in treble and bass clefs with a key signature of two sharps (F# and C#). It features complex fingerings and slurs. Measure numbers 25, 26, 27, and 28 are indicated at the start of each measure.

29

Handwritten musical notation for system 29, measures 29-32. The system is in treble and bass clefs with a key signature of two sharps (F# and C#). It features complex fingerings and slurs. Measure numbers 29, 30, 31, and 32 are indicated at the start of each measure.

31

Handwritten musical notation for system 31, measures 31-34. The system is in treble and bass clefs with a key signature of two sharps (F# and C#). It features complex fingerings and slurs. Measure numbers 31, 32, 33, and 34 are indicated at the start of each measure.

34

Handwritten musical notation for system 34, measures 34-37. The system is in treble and bass clefs with a key signature of two sharps (F# and C#). It features complex fingerings and slurs. Measure numbers 34, 35, 36, and 37 are indicated at the start of each measure.

37

Handwritten musical notation for system 37, measures 37-40. The system is in treble and bass clefs with a key signature of two sharps (F# and C#). It features complex fingerings and slurs. Measure numbers 37, 38, 39, and 40 are indicated at the start of each measure.