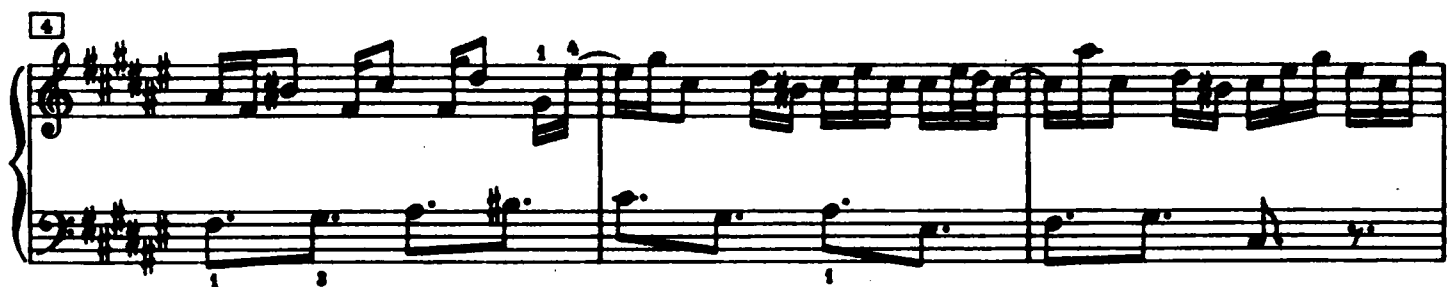


Praeludium XIII



16

Measures 16-18 of a musical score in G major (one sharp). The treble clef staff features a melodic line with a trill on the first measure, followed by eighth and sixteenth note patterns. The bass clef staff provides a harmonic accompaniment with eighth and sixteenth notes. Fingering numbers 1, 2, 3, 4, and 5 are indicated above the treble staff notes.

19

Measures 19-21 of the musical score. The treble clef staff continues the melodic development with trills and eighth notes. The bass clef staff features a more active accompaniment with sixteenth notes. Fingering numbers 1, 2, 3, 4, and 5 are indicated above the treble staff notes.

22

Measures 22-24 of the musical score. The treble clef staff shows a continuation of the melodic theme with trills and eighth notes. The bass clef staff has a simpler accompaniment with eighth notes. Fingering numbers 1, 2, 3, 4, and 5 are indicated above the treble staff notes.

25

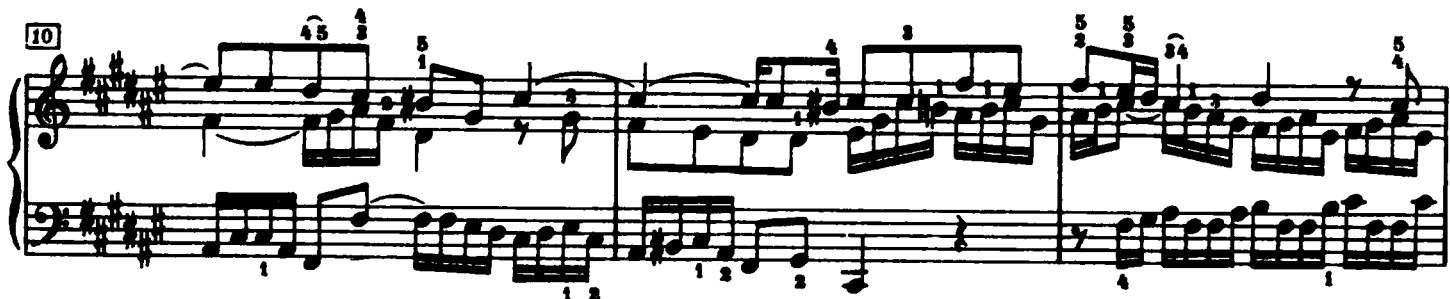
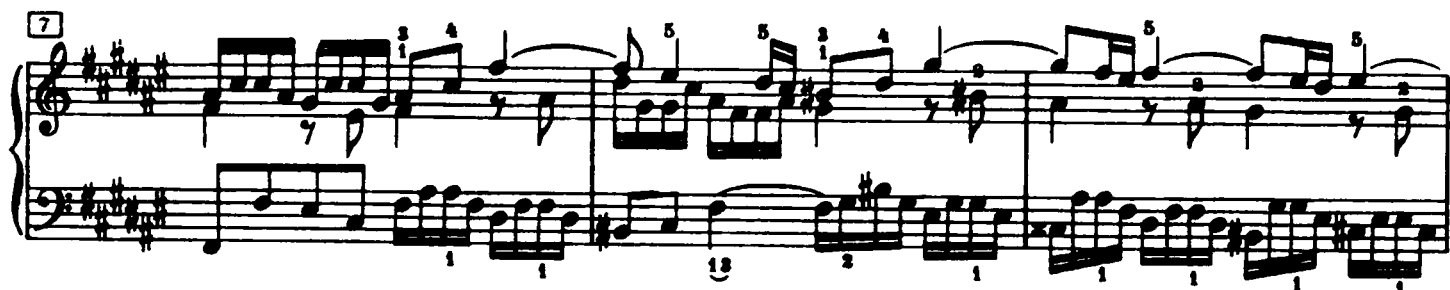
Measures 25-27 of the musical score. The treble clef staff features a melodic line with trills and eighth notes. The bass clef staff has a simple accompaniment with eighth notes. Fingering numbers 1, 2, 3, 4, and 5 are indicated above the treble staff notes.

28

Measures 28-30 of the musical score. The treble clef staff features a melodic line with trills and eighth notes. The bass clef staff has a simple accompaniment with eighth notes. Fingering numbers 1, 2, 3, 4, and 5 are indicated above the treble staff notes.

Fuga XIII

a 3 Voci



Musical score for 'The Merry Widow' (No. 21). The score is written for piano (p) and features a key signature of three sharps (F#, C#, G#) and a 2/4 time signature. The melody is primarily in the right hand, characterized by rapid sixteenth-note passages and trills. The left hand provides a steady accompaniment with eighth and sixteenth notes. The piece concludes with a final chord in the right hand.

24

5 1 5 1

1

[illegible][illegible]

A musical score for the song "The Rose Tree". The score is written for piano (p) and features a treble and bass staff. The key signature is one sharp (F#), and the time signature is 3/4. The melody is in the treble staff, and the accompaniment is in the bass staff. The score includes a key signature change from one sharp to two sharps (F# and C#) in the middle section. The piece concludes with a double bar line and a repeat sign.