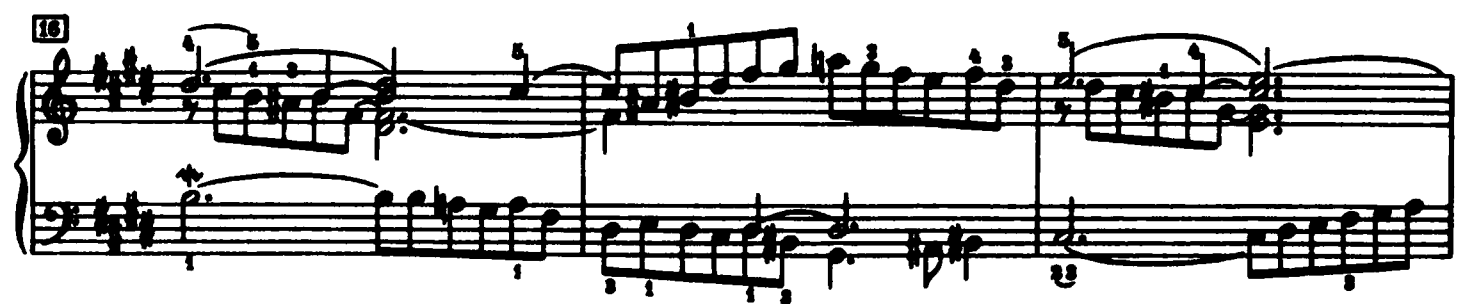
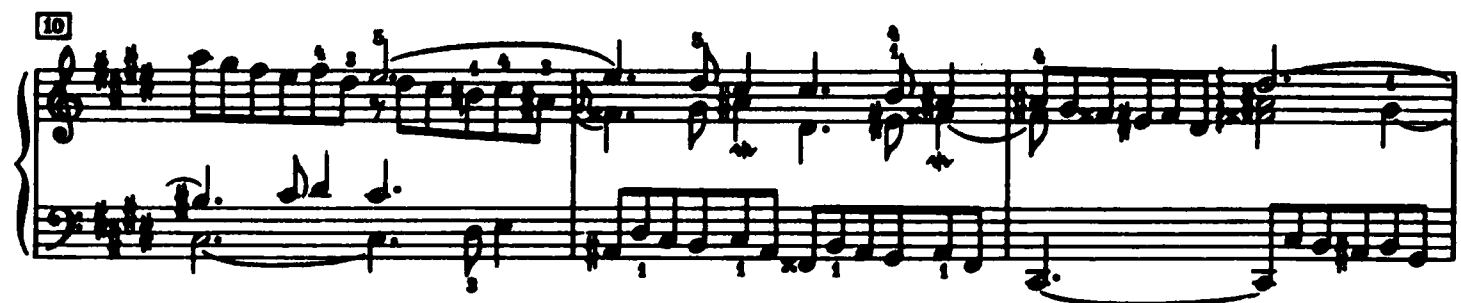
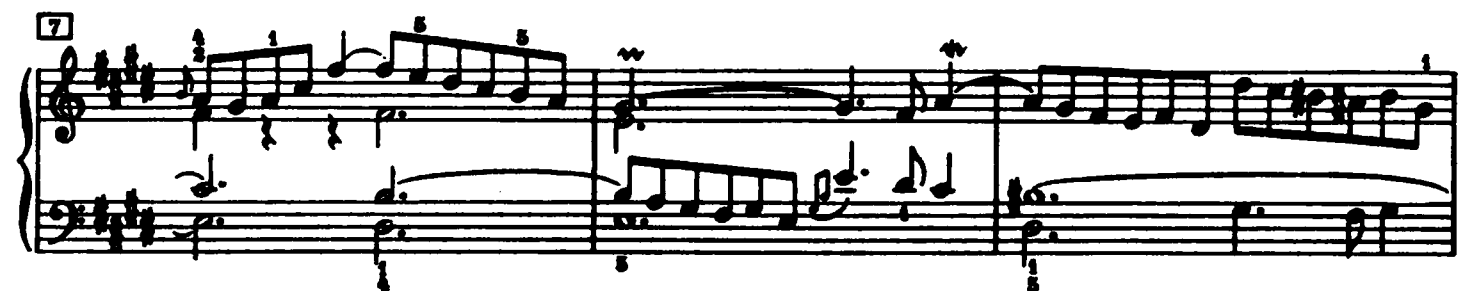
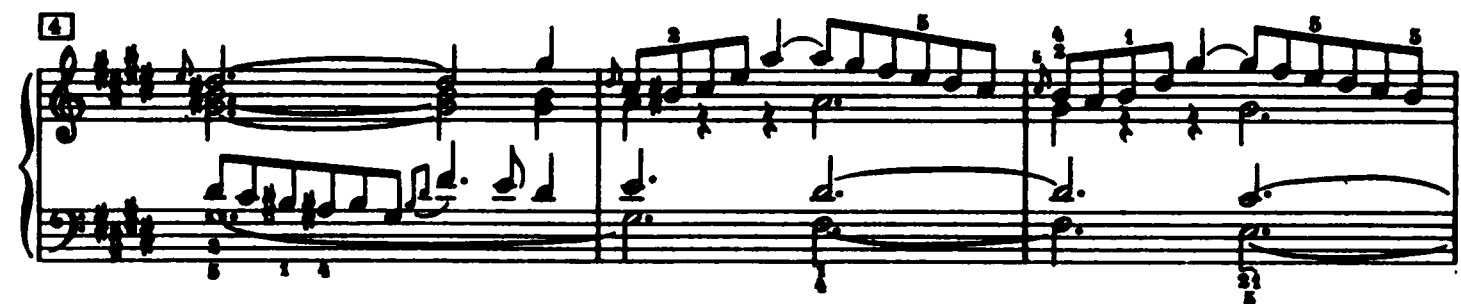
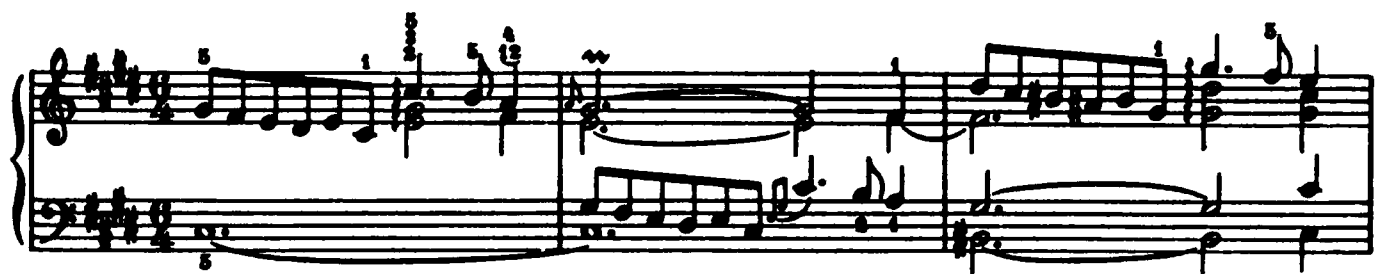


Praeludium IV



19

System 19, measures 19-21. The key signature is three sharps (F#, C#, G#). The music is in 4/4 time. Measure 19 starts with a treble clef and a bass clef. The treble staff has a series of eighth notes and quarter notes, while the bass staff has a more complex rhythm with eighth and sixteenth notes. Measure 20 continues the melodic line in the treble and has a bass line with quarter notes. Measure 21 features a treble staff with a melodic line and a bass staff with a more active line. Fingering numbers 1, 2, 3, 4, 5 are visible.

22

System 22, measures 22-24. Measure 22 continues the melodic development in the treble and has a bass line with quarter notes. Measure 23 features a treble staff with a melodic line and a bass staff with a more active line. Measure 24 features a treble staff with a melodic line and a bass staff with a more active line. Fingering numbers 1, 2, 3, 4, 5 are visible.

25

System 25, measures 25-27. Measure 25 continues the melodic development in the treble and has a bass line with quarter notes. Measure 26 features a treble staff with a melodic line and a bass staff with a more active line. Measure 27 features a treble staff with a melodic line and a bass staff with a more active line. Fingering numbers 1, 2, 3, 4, 5 are visible.

28

System 28, measures 28-30. Measure 28 continues the melodic development in the treble and has a bass line with quarter notes. Measure 29 features a treble staff with a melodic line and a bass staff with a more active line. Measure 30 features a treble staff with a melodic line and a bass staff with a more active line. Fingering numbers 1, 2, 3, 4, 5 are visible.

31

System 31, measures 31-33. Measure 31 continues the melodic development in the treble and has a bass line with quarter notes. Measure 32 features a treble staff with a melodic line and a bass staff with a more active line. Measure 33 features a treble staff with a melodic line and a bass staff with a more active line. Fingering numbers 1, 2, 3, 4, 5 are visible.

34

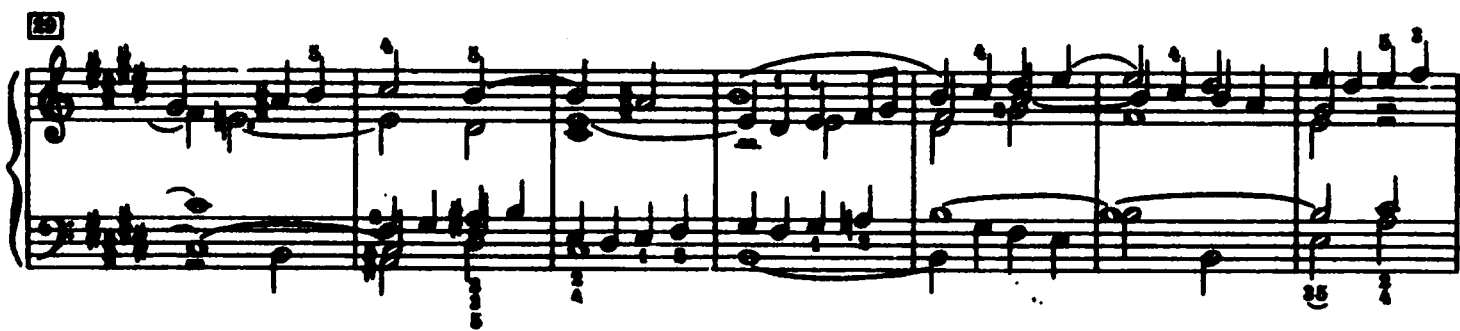
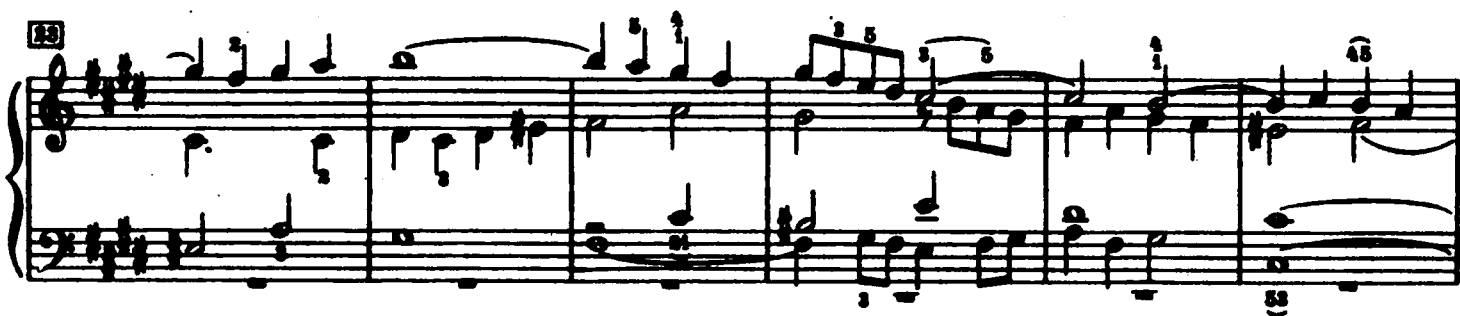
System 34, measures 34-36. Measure 34 continues the melodic development in the treble and has a bass line with quarter notes. Measure 35 features a treble staff with a melodic line and a bass staff with a more active line. Measure 36 features a treble staff with a melodic line and a bass staff with a more active line. Fingering numbers 1, 2, 3, 4, 5 are visible.

37

System 37, measures 37-39. Measure 37 continues the melodic development in the treble and has a bass line with quarter notes. Measure 38 features a treble staff with a melodic line and a bass staff with a more active line. Measure 39 features a treble staff with a melodic line and a bass staff with a more active line. Fingering numbers 1, 2, 3, 4, 5 are visible.

Fuga IV

a 5 Voci



38

System 38: Treble and bass staves. Treble staff has a melodic line with eighth and sixteenth notes, including fingerings 2, 2, 5, 5, 5, 1 5, and 2. Bass staff has a supporting line with chords and fingerings 5 and 3.

41

System 41: Treble staff has a melodic line with a slur over measures 41-42 and fingerings 5, 4 5, and 1. Bass staff has a supporting line with eighth notes and fingerings 1 and 3.

46

System 46: Treble staff has a melodic line with eighth notes and fingerings 1, 2 1, 5, 5, 1 5, and 2. Bass staff has a supporting line with eighth notes and fingerings 5 and 1.

51

System 51: Treble staff has a melodic line with eighth notes and fingerings 5, 3, 1, 5, and 1. Bass staff has a supporting line with eighth notes and fingerings 1, 3, 2, 5, and 5.

56

System 56: Treble staff has a melodic line with eighth notes and fingerings 5, 4, 5, 4 5 4, 1 5, and 1. Bass staff has a supporting line with eighth notes and fingerings 1, 3, 3, 5, and 3.

61

System 61: Treble staff has a melodic line with eighth notes and fingerings 1, 3, 5, 5, 5, 5, and 1. Bass staff has a supporting line with eighth notes and fingerings 1, 1, 1, 1, and 1.

63

System 63: Treble and bass staves in G major. Treble staff features a melodic line with eighth and sixteenth notes, including fingerings 1, 2, 3, 4, 5, 4, 3, 2, 1. Bass staff provides harmonic support with eighth and sixteenth notes. Measure numbers 63, 64, 65, and 66 are indicated above the treble staff.

70

System 70: Treble and bass staves. Treble staff continues the melodic development with fingerings 1, 2, 3, 4, 5, 4, 3, 2, 1. Bass staff features a steady eighth-note accompaniment. Measure numbers 70, 71, 72, and 73 are indicated above the treble staff.

74

System 74: Treble and bass staves. Treble staff has a melodic line with fingerings 1, 2, 3, 4, 5, 4, 3, 2, 1. Bass staff continues the eighth-note accompaniment. Measure numbers 74, 75, 76, and 77 are indicated above the treble staff.

78

System 78: Treble and bass staves. Treble staff features a melodic line with fingerings 1, 2, 3, 4, 5, 4, 3, 2, 1. Bass staff continues the eighth-note accompaniment. Measure numbers 78, 79, 80, and 81 are indicated above the treble staff.

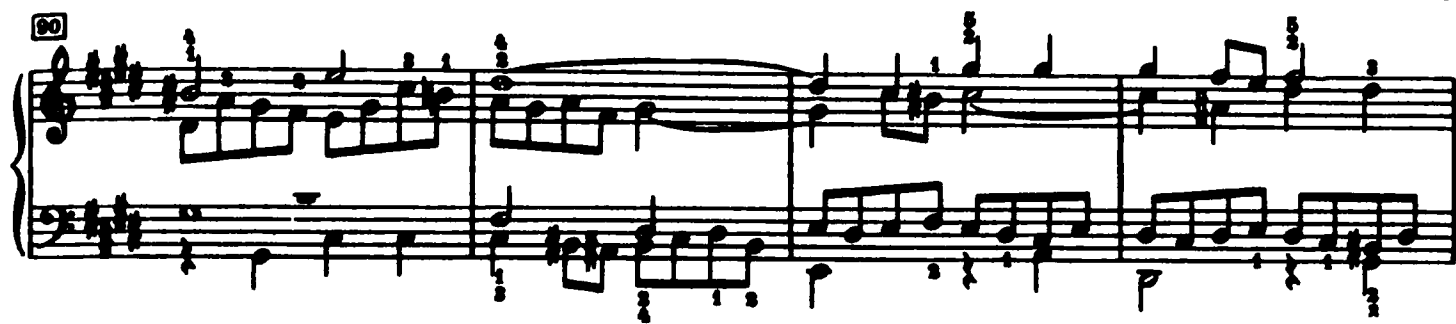
83

System 83: Treble and bass staves. Treble staff features a melodic line with fingerings 1, 2, 3, 4, 5, 4, 3, 2, 1. Bass staff continues the eighth-note accompaniment. Measure numbers 83, 84, 85, and 86 are indicated above the treble staff.

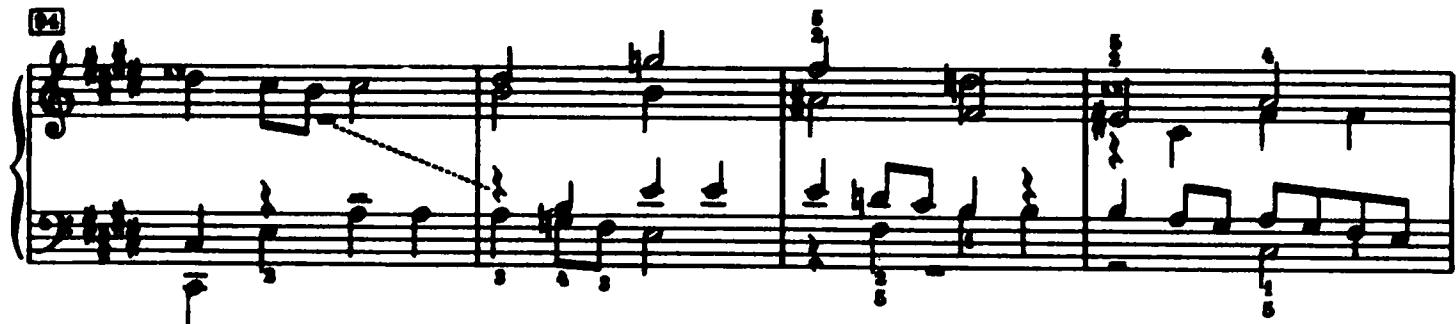
89

System 89: Treble and bass staves. Treble staff features a melodic line with fingerings 1, 2, 3, 4, 5, 4, 3, 2, 1. Bass staff continues the eighth-note accompaniment. Measure numbers 89, 90, 91, and 92 are indicated above the treble staff.

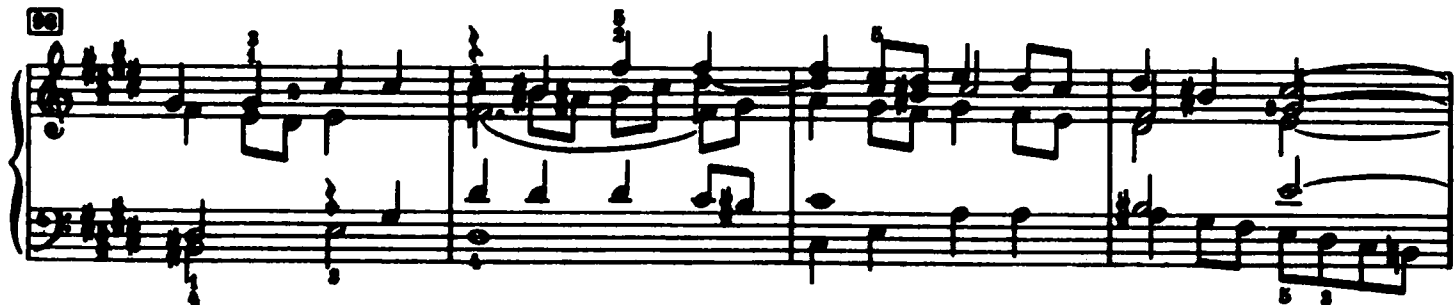
90



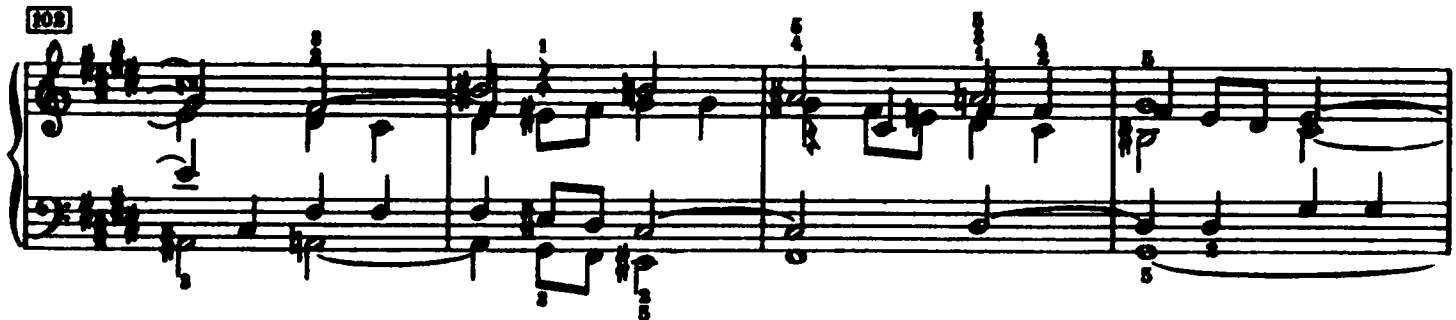
94



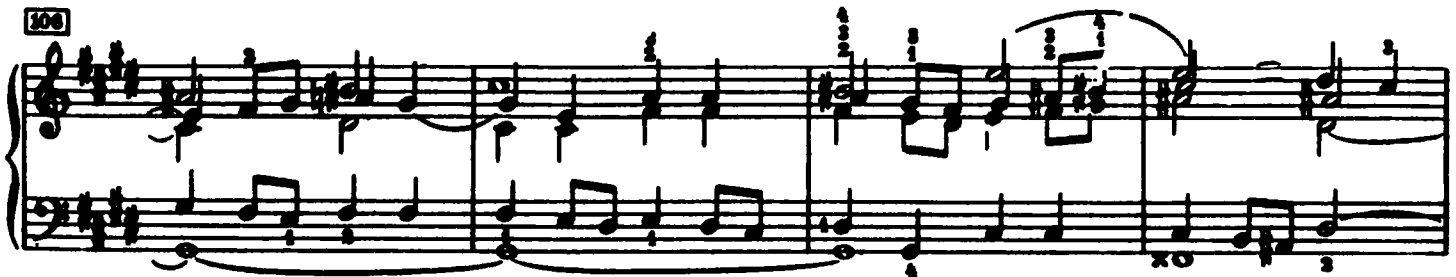
98



102



106



110

