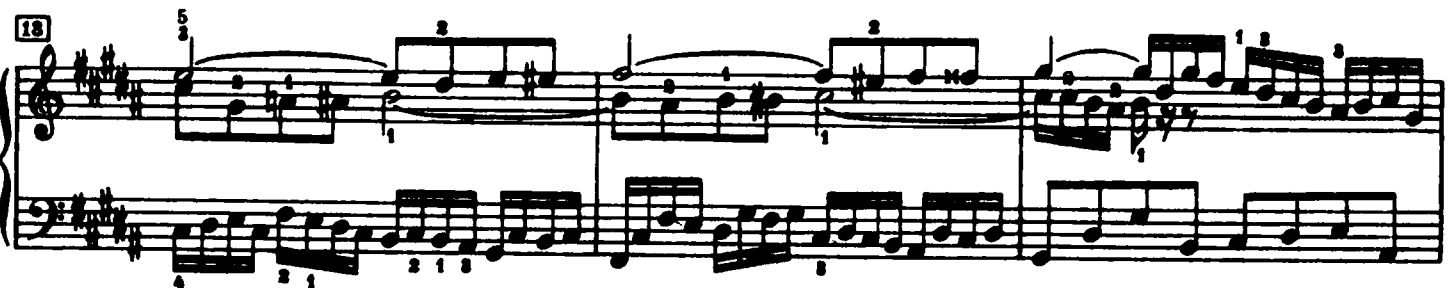
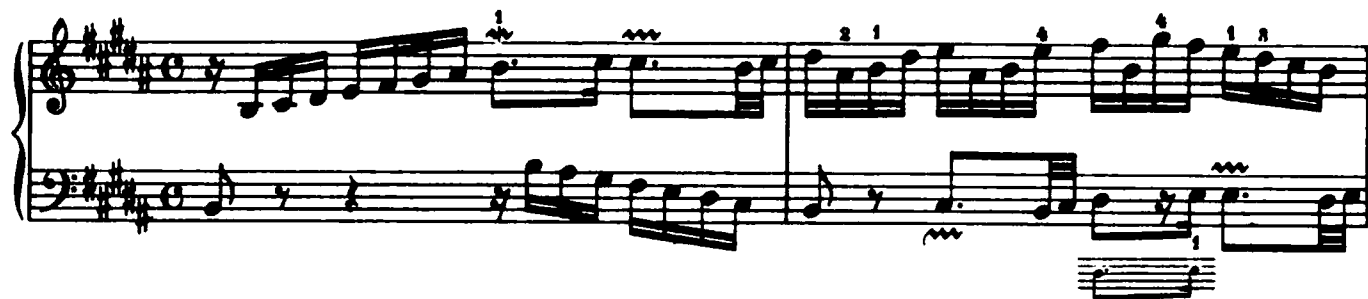


## Praeludium XXIII



16

Measures 16 and 17 of a musical score in D major (two sharps). Measure 16 features a treble staff with eighth-note runs and a bass staff with a steady eighth-note accompaniment. Measure 17 continues the treble staff's melodic line with some rests and a descending eighth-note pattern in the bass.

18

Measures 18 and 19. Measure 18 shows a more active bass staff with eighth-note patterns, while the treble staff has some rests. Measure 19 features a treble staff with a descending eighth-note scale and a bass staff with a similar eighth-note accompaniment.

21

Measures 21, 22, and 23. Measure 21 has a treble staff with eighth-note runs and a bass staff with a steady eighth-note accompaniment. Measure 22 continues the treble staff's melodic line. Measure 23 features a treble staff with a descending eighth-note scale and a bass staff with a similar eighth-note accompaniment.

24

Measures 24 and 25. Measure 24 features a treble staff with a descending eighth-note scale and a bass staff with a steady eighth-note accompaniment. Measure 25 continues the treble staff's melodic line with some rests and a descending eighth-note pattern in the bass.

26

Measures 26 and 27. Measure 26 features a treble staff with a descending eighth-note scale and a bass staff with a steady eighth-note accompaniment. Measure 27 continues the treble staff's melodic line with some rests and a descending eighth-note pattern in the bass.

28

Measures 28, 29, and 30. Measure 28 features a treble staff with a descending eighth-note scale and a bass staff with a steady eighth-note accompaniment. Measure 29 continues the treble staff's melodic line. Measure 30 features a treble staff with a descending eighth-note scale and a bass staff with a similar eighth-note accompaniment.

81

88

96

99

41

44

## Fuga XXIII

**a 4 Voci**

A musical score for the song "The Rose Tree". The score is written for a single melodic line on a treble clef staff. The key signature is one sharp (F#), and the time signature is 4/4. The melody consists of a series of eighth and quarter notes, with some rests. The lyrics "The Rose Tree" are written below the staff, aligned with the notes. The score is presented in a simple, black-and-white format.

9

Handwritten musical score for 'The Rose Tree'. The score is written on two staves, treble and bass clef, with a key signature of three sharps (F#, C#, G#). The melody is in the treble staff, and the accompaniment is in the bass staff. The piece is marked with a '9' in a box at the beginning. The melody features a series of eighth and sixteenth notes, with some rests. The accompaniment consists of a steady eighth-note pattern in the left hand. The piece ends with a double bar line.

[illegible]

21

2 4 5 4 5 3 2 1 4 5 6 7 8 9 10 11 12 13 14 15 16 17 18 19 20 21 22 23 24 25 26 27 28 29 30 31 32 33 34 35 36 37 38 39 40 41 42 43 44 45 46 47 48 49 50 51 52 53 54 55 56 57 58 59 60 61 62 63 64 65 66 67 68 69 70 71 72 73 74 75 76 77 78 79 80 81 82 83 84 85 86 87 88 89 90 91 92 93 94 95 96 97 98 99 100

38

Handwritten musical score for 'The Rose Tree'. The score is written on two staves, treble and bass clef, with a key signature of one sharp (F#). The melody is in the treble staff, and the accompaniment is in the bass staff. The piece consists of 38 measures. The notation includes various musical symbols such as notes, rests, and accidentals. The piece ends with a double bar line and a repeat sign.

39

44

49

54

59

64

68

72

77

82

86

91

95

100

The image displays a page of musical notation for piano, consisting of six systems of staves. Each system includes a treble clef staff and a bass clef staff. The notation is written in a key signature of three sharps (F#, C#, G#) and a 2/4 time signature. The systems are labeled with measure numbers: 72, 77, 82, 86, 91, 95, and 100. The notation includes various musical symbols such as notes, rests, and fingerings, indicating a complex piece of music. The page is numbered 185 in the top right corner.