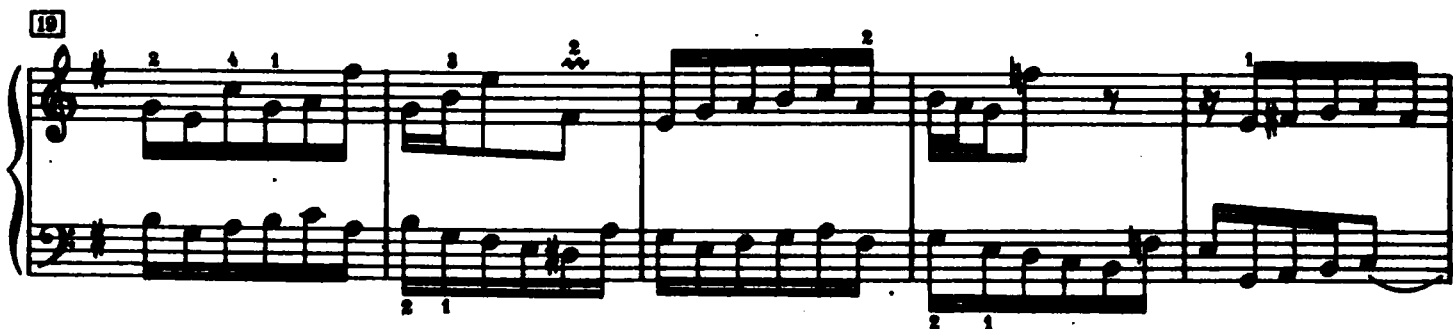
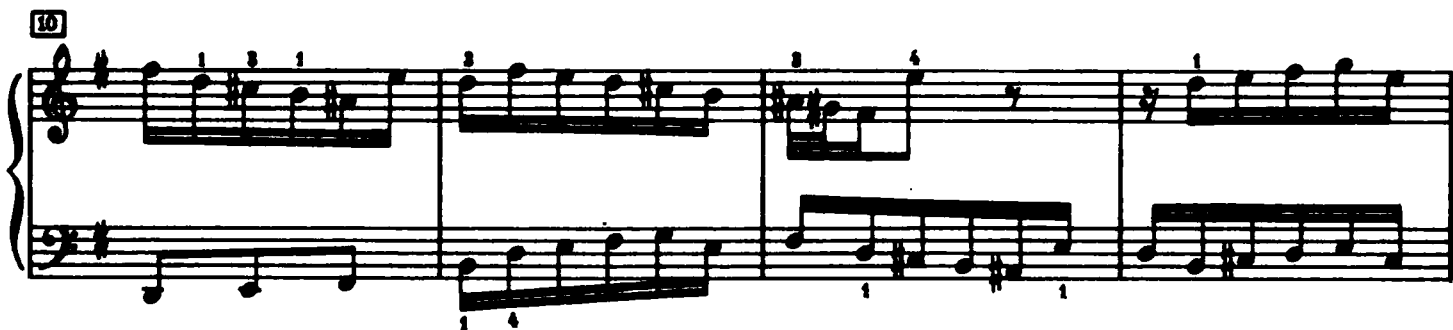
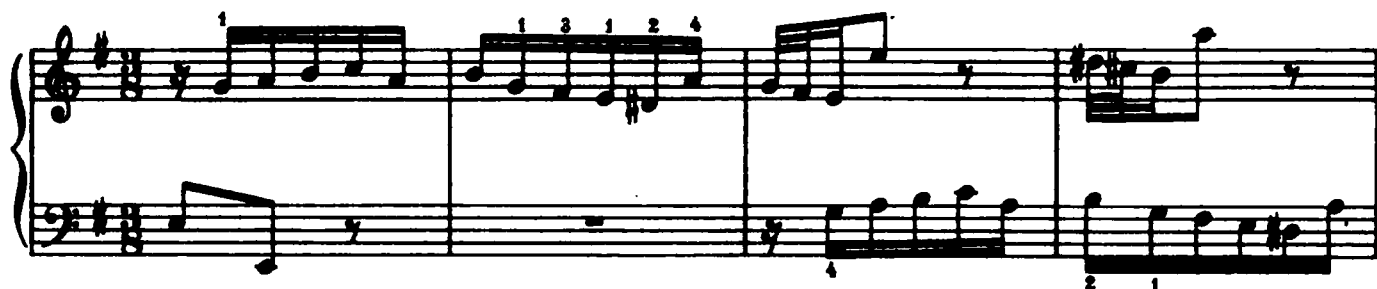


Praeludium X



24

29

34

39

44

49

Measures 49-53. Treble clef, key of D major. Measure 49: Treble has a quarter note D5 with a fermata, bass has a half note D2. Measure 50: Treble has eighth notes E5, F#5, G5, A5, bass has eighth notes D2, E2, F#2, G2. Measure 51: Treble has a half note A5 with a fermata, bass has a half note A2. Measure 52: Treble has eighth notes B5, A5, G5, F#5, bass has eighth notes B2, A2, G2, F#2. Measure 53: Treble has a half note F#5, bass has a half note F#2. Fingering: 4, 8, 5, 1, 4, 5, 4, 1, 2.

54

Measures 54-58. Treble clef, key of D major. Measure 54: Treble has eighth notes G5, A5, B5, A5, G5, bass has eighth notes D2, E2, F#2, G2. Measure 55: Treble has eighth notes F#5, E5, D5, C#5, bass has eighth notes F#2, E2, D2, C#2. Measure 56: Treble has eighth notes B5, A5, G5, F#5, bass has eighth notes B2, A2, G2, F#2. Measure 57: Treble has eighth notes E5, F#5, G5, A5, bass has eighth notes E2, F#2, G2, A2. Measure 58: Treble has a half note A5, bass has a half note A2. Fingering: 1, 5, 2, 5, 1, 2, 2, 5.

59

Measures 59-63. Treble clef, key of D major. Measure 59: Treble has eighth notes G5, A5, B5, A5, G5, bass has eighth notes D2, E2, F#2, G2. Measure 60: Treble has eighth notes F#5, E5, D5, C#5, bass has eighth notes F#2, E2, D2, C#2. Measure 61: Treble has eighth notes B5, A5, G5, F#5, bass has eighth notes B2, A2, G2, F#2. Measure 62: Treble has eighth notes E5, F#5, G5, A5, bass has eighth notes E2, F#2, G2, A2. Measure 63: Treble has a half note A5, bass has a half note A2. Fingering: 2, 1, 3, 1.

64

Measures 64-68. Treble clef, key of D major. Measure 64: Treble has eighth notes G5, A5, B5, A5, G5, bass has eighth notes D2, E2, F#2, G2. Measure 65: Treble has eighth notes F#5, E5, D5, C#5, bass has eighth notes F#2, E2, D2, C#2. Measure 66: Treble has eighth notes B5, A5, G5, F#5, bass has eighth notes B2, A2, G2, F#2. Measure 67: Treble has eighth notes E5, F#5, G5, A5, bass has eighth notes E2, F#2, G2, A2. Measure 68: Treble has a half note A5, bass has a half note A2. Fingering: 2, 1, 5, 1, 5, 1.

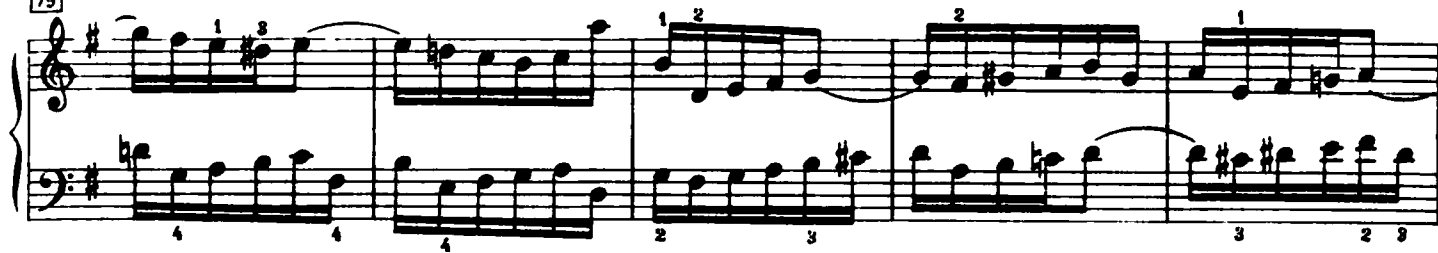
69

Measures 69-73. Treble clef, key of D major. Measure 69: Treble has eighth notes G5, A5, B5, A5, G5, bass has eighth notes D2, E2, F#2, G2. Measure 70: Treble has eighth notes F#5, E5, D5, C#5, bass has eighth notes F#2, E2, D2, C#2. Measure 71: Treble has eighth notes B5, A5, G5, F#5, bass has eighth notes B2, A2, G2, F#2. Measure 72: Treble has eighth notes E5, F#5, G5, A5, bass has eighth notes E2, F#2, G2, A2. Measure 73: Treble has a half note A5, bass has a half note A2. Fingering: 2, 1, (w), 4, 3.

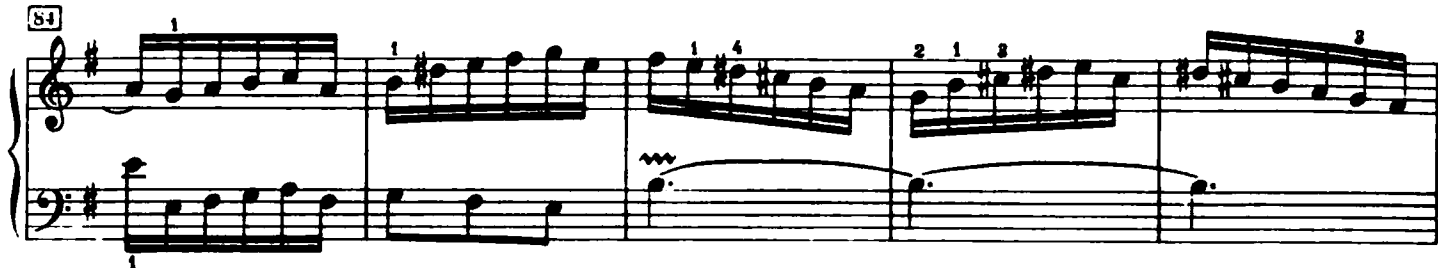
74

Measures 74-78. Treble clef, key of D major. Measure 74: Treble has eighth notes G5, A5, B5, A5, G5, bass has eighth notes D2, E2, F#2, G2. Measure 75: Treble has eighth notes F#5, E5, D5, C#5, bass has eighth notes F#2, E2, D2, C#2. Measure 76: Treble has eighth notes B5, A5, G5, F#5, bass has eighth notes B2, A2, G2, F#2. Measure 77: Treble has eighth notes E5, F#5, G5, A5, bass has eighth notes E2, F#2, G2, A2. Measure 78: Treble has a half note A5, bass has a half note A2. Fingering: 1, 5, 5, 5, 2, 1, 2, 8, 5.

79



84



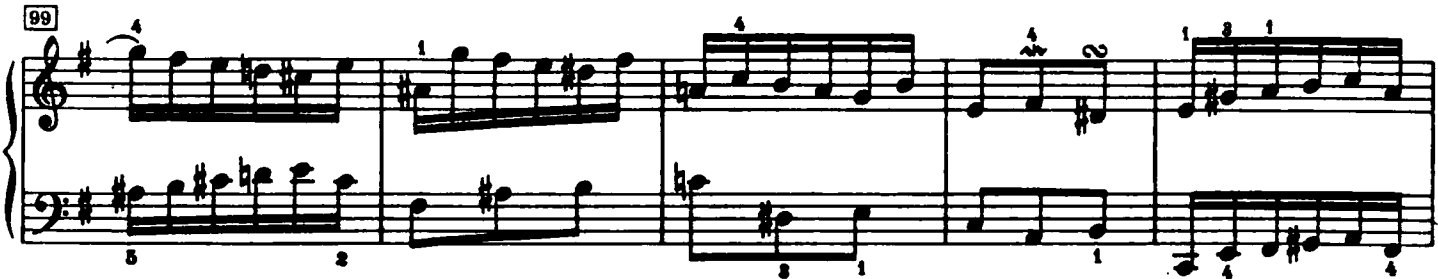
89



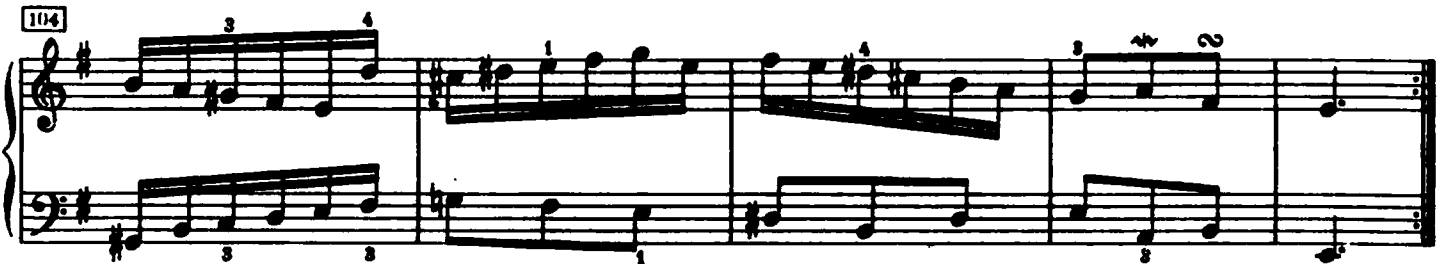
94



99

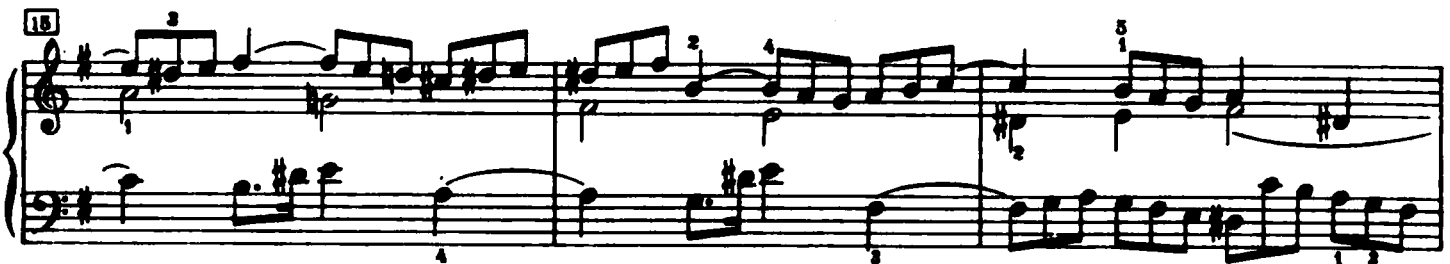
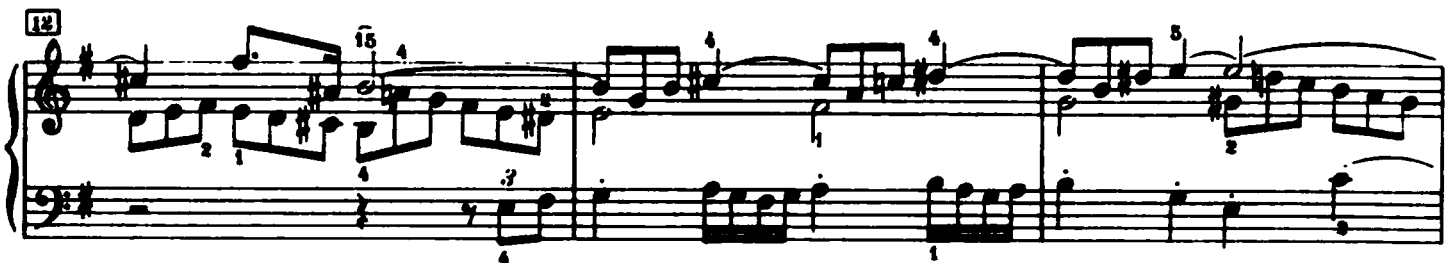


104



Fuga X

a 3 Voci



21

24

27

30

33

36

39

Measures 39-42 of a piano piece. The key signature has one sharp (F#). The music features a complex melodic line in the right hand with many slurs and fingerings (1-5), and a more rhythmic accompaniment in the left hand. Measure numbers 141, 142, 143, and 144 are written below the left hand staff.

43

Measures 43-46 of a piano piece. The right hand continues with intricate melodic patterns, while the left hand provides a steady accompaniment. Measure numbers 145, 146, 147, and 148 are written below the left hand staff.

47

Measures 47-50 of a piano piece. The melodic line in the right hand shows some rests and is heavily slurred. The left hand accompaniment remains active. Measure numbers 149, 150, 151, and 152 are written below the left hand staff.

51

Measures 51-54 of a piano piece. The right hand features a series of slurred eighth and sixteenth notes. The left hand accompaniment consists of chords and moving lines. Measure numbers 153, 154, 155, and 156 are written below the left hand staff.

55

Measures 55-58 of a piano piece. The right hand continues with a flowing melodic line. The left hand accompaniment features some chords and moving lines. Measure numbers 157, 158, 159, and 160 are written below the left hand staff.

59

Measures 59-62 of a piano piece. The right hand has some rests and slurred passages. The left hand accompaniment is more rhythmic. Measure numbers 161, 162, 163, and 164 are written below the left hand staff.

63

63 64 65 66

67

67 68 69 70

71

71 72 73 74

75

75 76 77 78

79

79 80 81 82

83

83 84 85 86

¹⁾ Schluß nach dem Autograph

87 88

89 90