

Praeludium VII



[36]

System 36: Treble and bass staves. Treble staff has a key signature of two flats and a common time signature. It contains a melodic line with eighth and sixteenth notes, including fingerings 1, 2, 1, 4, 1, 1. Bass staff has a rhythmic accompaniment with eighth and sixteenth notes.

[41]

System 41: Treble and bass staves. Treble staff continues the melodic line with fingerings 3, 1, 2, 1, 2, 3, 2, 1, 1. Bass staff has a rhythmic accompaniment with fingerings 1, 1, 4, 1, 1.

[46]

System 46: Treble and bass staves. Treble staff has a melodic line with fingerings 3, 3, 2, 1, 2, 3, 3, 1, 3 (4th). Bass staff has a rhythmic accompaniment with fingerings 4, 1, 1.

[51]

System 51: Treble and bass staves. Treble staff has a melodic line with fingerings 5, 4, 1, 5, 5, 3. Bass staff has a rhythmic accompaniment with fingerings 1, 1.

[56]

System 56: Treble and bass staves. Treble staff has a melodic line with fingerings 3, 4. Bass staff has a rhythmic accompaniment with fingerings 5, 5.

[61]

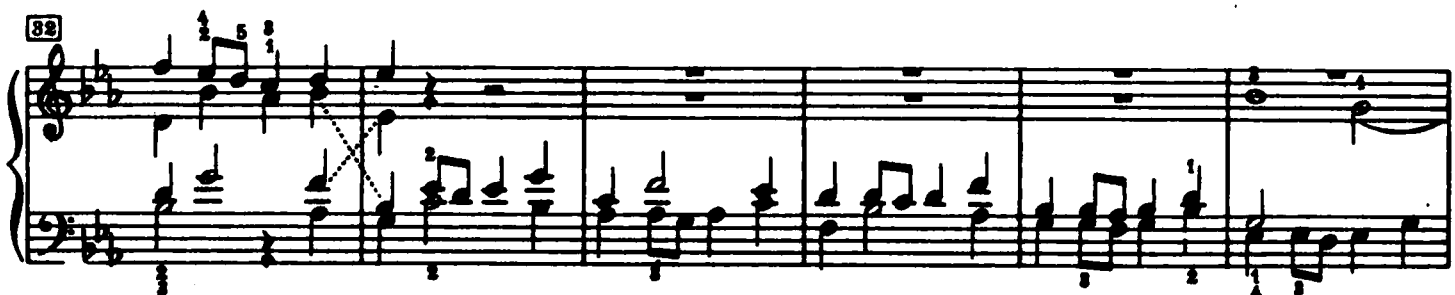
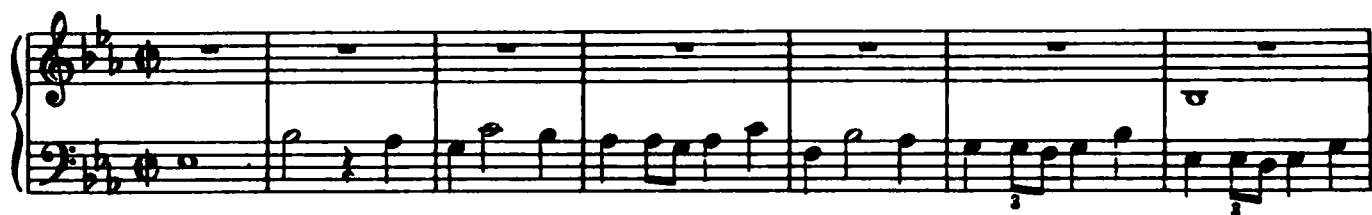
System 61: Treble and bass staves. Treble staff has a melodic line with fingerings 2, 2. Bass staff has a rhythmic accompaniment with fingerings 2, 1, 1, 1, 1, 1.

[66]

System 66: Treble and bass staves. Treble staff has a melodic line with fingerings 5, 4, 4, 5. Bass staff has a rhythmic accompaniment with fingerings 1, 1, 1, 1, 1.

Fuga VII

a 4 Voci



38

Measures 38-43. Treble and bass staves. Treble staff contains many beamed eighth and sixteenth notes with fingerings 5, 3, 4, 5, 4, 3, 2, 1, 5, 4, 3, 2, 1. Bass staff contains beamed eighth and sixteenth notes with fingerings 1, 2, 3, 4, 5, 4, 3, 2, 1.

44

Measures 44-48. Treble staff contains beamed eighth and sixteenth notes with fingerings 3, 4, 3, 4, 5, 1, 2, 1, 3, 2, 1, 3, 5, 1, 2. Bass staff contains beamed eighth and sixteenth notes with fingerings 4, 1, 5, 1.

49

Measures 49-53. Treble staff contains beamed eighth and sixteenth notes with fingerings 2, 1, 3, 2, 1, 3, 2, 1, 4, 5. Bass staff contains beamed eighth and sixteenth notes with fingerings 2, 1, 3, 4, 1, 2.

54

Measures 54-58. Treble staff contains beamed eighth and sixteenth notes with fingerings 3, 4, 2, 1, 3, 4, 5, 3, 2, 1, 4. Bass staff contains beamed eighth and sixteenth notes with fingerings 4, 1, 3, 1, 2, 4, 1, 3, 4.

59

Measures 59-63. Treble staff contains beamed eighth and sixteenth notes with fingerings 5, 2, 1, 5, 5, 4, 5, 2, 1. Bass staff contains beamed eighth and sixteenth notes with fingerings 3, 2, 1, 4, 3, 2, 1, 4, 5, 3.

64

Measures 64-68. Treble staff contains beamed eighth and sixteenth notes with fingerings 5, 4, 5, 4, 5, 2, 4, 3. Bass staff contains beamed eighth and sixteenth notes with fingerings 3, 5, 5, 2, 3, 2, 1, 2.