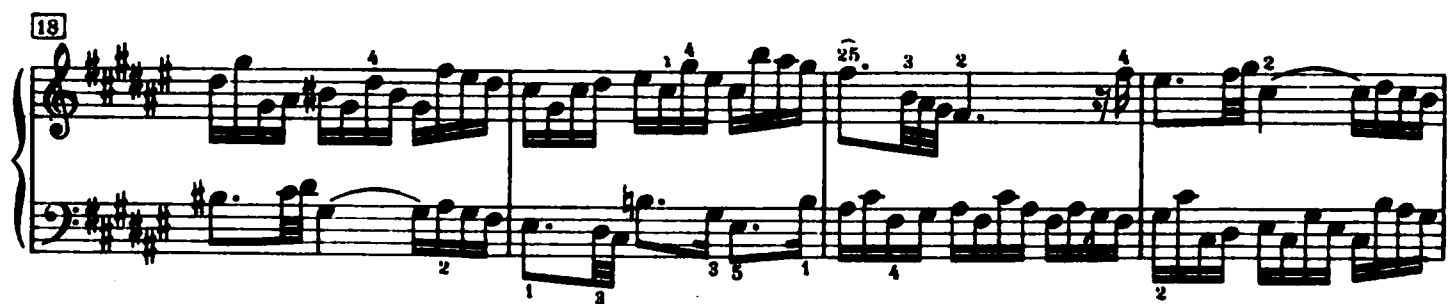
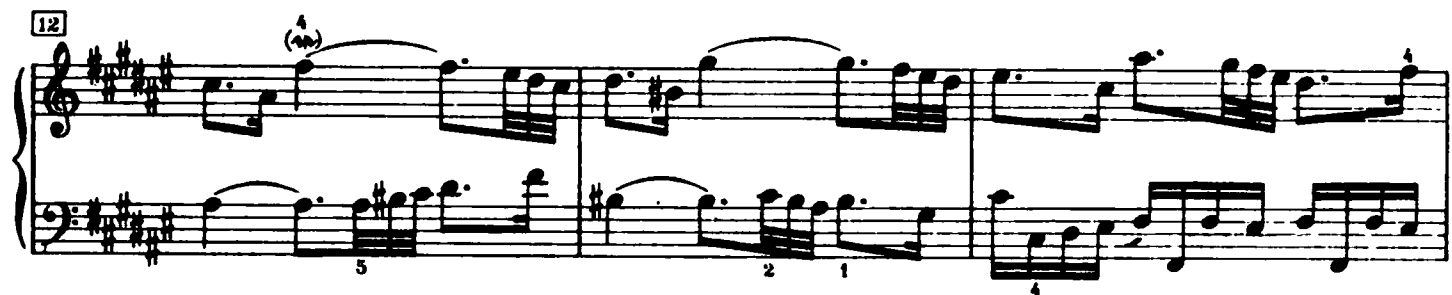
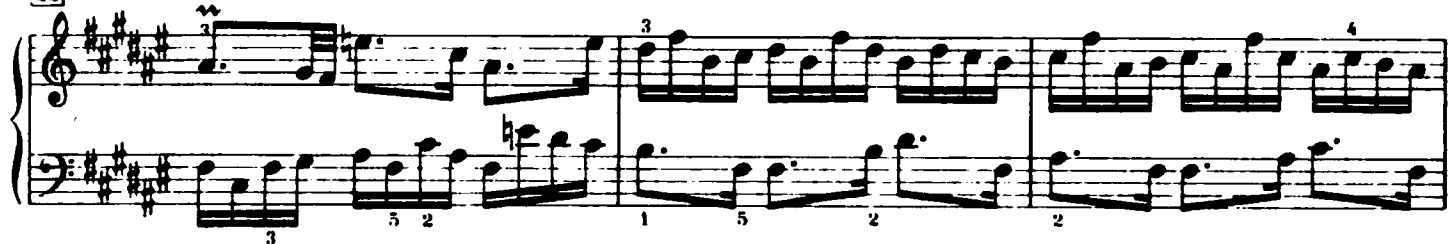


Praeludium XIII



22



25



28



31



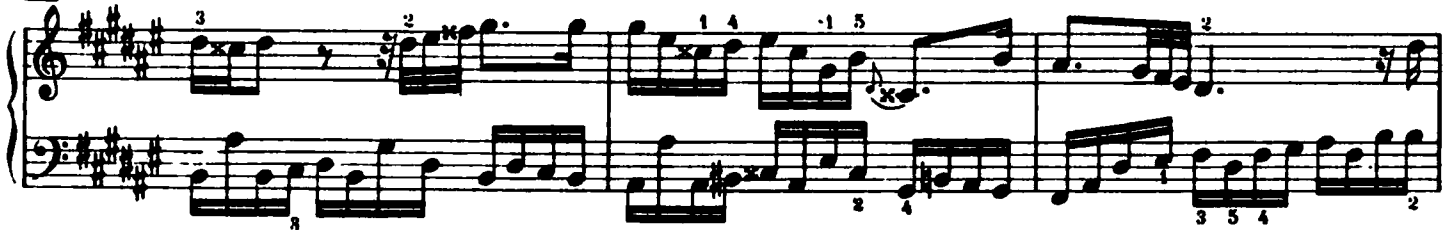
34



37



40



43

Measures 43-46 of a musical score. The key signature has three sharps (F#, C#, G#). The melody in the treble clef features eighth and sixteenth notes with various fingerings (1, 4, 2, 1, 5, 3, 1). The bass line consists of eighth notes with fingerings 1, 2, 2, 1, 5. A trill is marked above the final note of measure 45.

47

Measures 47-49. Measure 47 has a fingering of 1. Measure 48 has fingerings 2, 1, 3. Measure 49 has a fingering of 1. The melody continues with eighth and sixteenth notes. The bass line has fingerings 3, 2, 1, 5, 1, 2.

50

Measures 50-52. Measure 50 has fingerings 1, 3. Measure 51 has a fingering of 5. Measure 52 has a fingering of 4 and a trill. The melody features eighth and sixteenth notes. The bass line has fingerings 4, 4, 4.

53

Measures 53-55. Measure 53 has a fingering of 5. Measure 54 has a fingering of 4. Measure 55 has a fingering of 1. The melody continues with eighth and sixteenth notes. The bass line has fingerings 3, 2, 1, 1.

56

Measures 56-59. Measure 56 has a fingering of 1. Measure 57 has fingerings 1, 4. Measure 58 has a fingering of 4. Measure 59 has a fingering of 4. The melody features eighth and sixteenth notes. The bass line has fingerings 3, 2, 3, 1, 4.

60



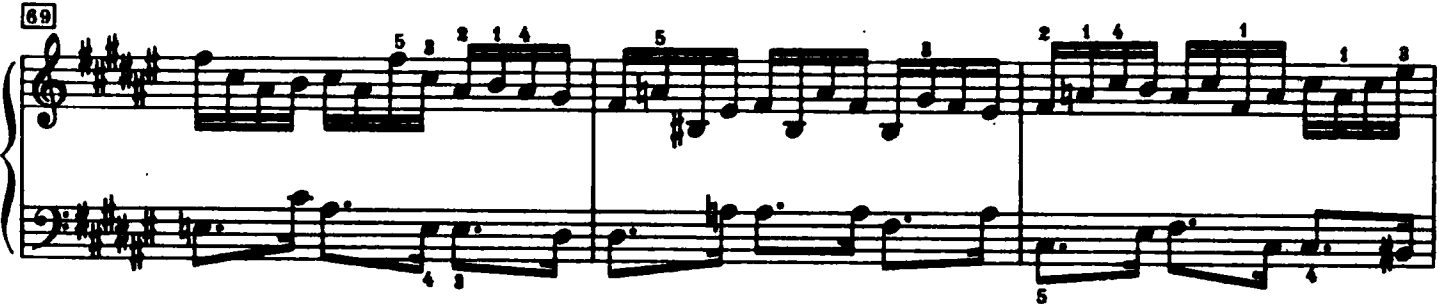
68



66



69

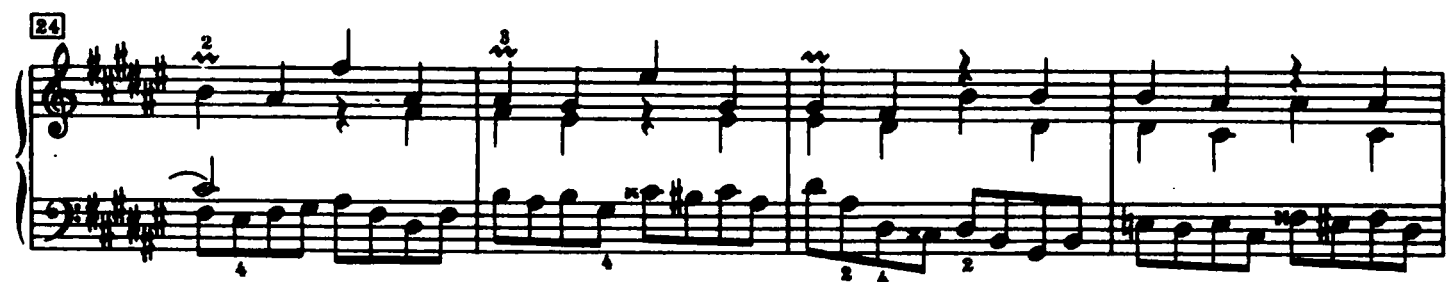
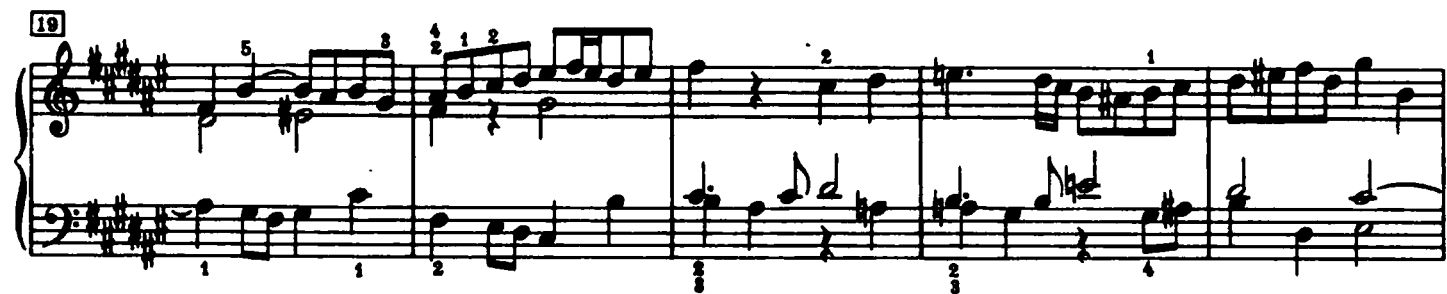
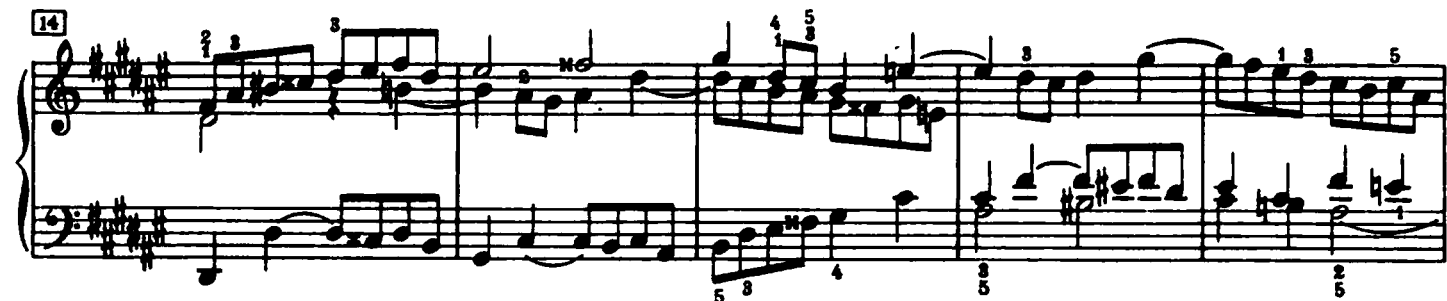
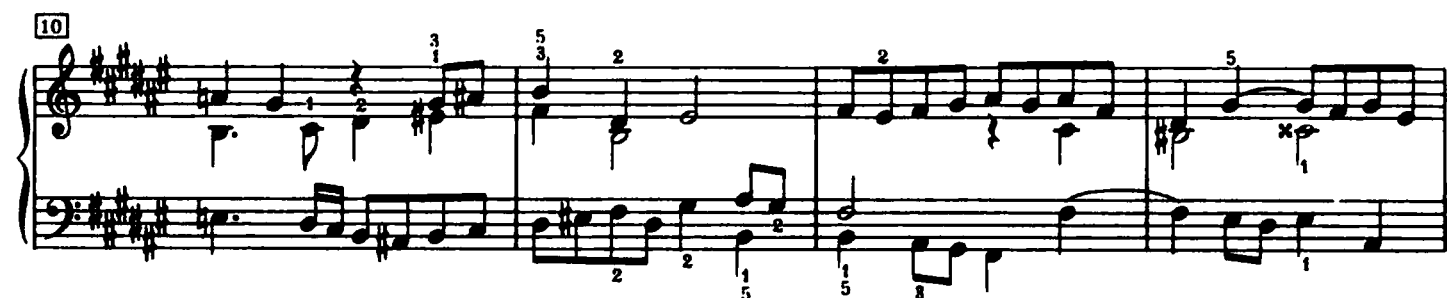


72



Fuga XIII

a 3 Voci



28

2 4 2 2 4 1 2 1 2 4 1 5

32

2 3 2 2 2

37

3 1 4 3 5 4 5 2 4 2

41

1 2 2 2 1 3 2 1 3 2 1 1

45

5 1 2 1 1 1 1 1

49

5 2 1 3 2 1 2 5 3 2 15

68

Measures 68-73 of a musical score in G major (one sharp). The right hand features a melodic line with various ornaments and fingerings (1, 2, 3, 4, 5). The left hand provides a steady accompaniment with eighth and sixteenth notes. Measure 73 ends with a repeat sign.

69

Measures 74-79 of the musical score. The right hand continues the melodic development with more complex ornaments and fingerings. The left hand maintains the accompaniment pattern. Measure 79 ends with a repeat sign.

70

Measures 80-85 of the musical score. The right hand features a series of sixteenth-note runs and ornaments. The left hand continues the accompaniment. Measure 85 ends with a repeat sign.

71

Measures 86-91 of the musical score. The right hand has a more active melodic line with frequent ornaments. The left hand accompaniment includes some sixteenth-note patterns. Measure 91 ends with a repeat sign.

72

Measures 92-97 of the musical score. The right hand features a melodic line with a trill in measure 94 and various ornaments. The left hand accompaniment includes some sixteenth-note patterns. Measure 97 ends with a repeat sign.

73

Measures 98-103 of the musical score. The right hand features a melodic line with a trill in measure 100 and various ornaments. The left hand accompaniment includes some sixteenth-note patterns. Measure 103 ends with a repeat sign.