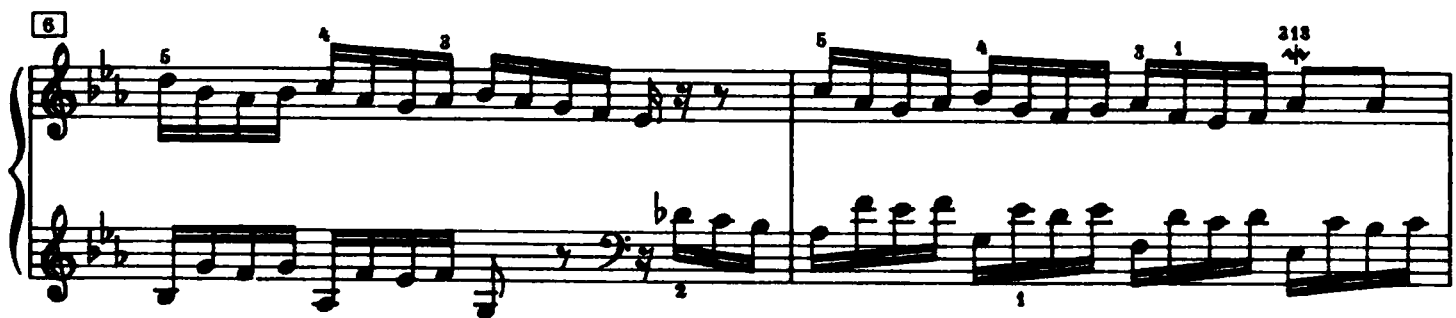
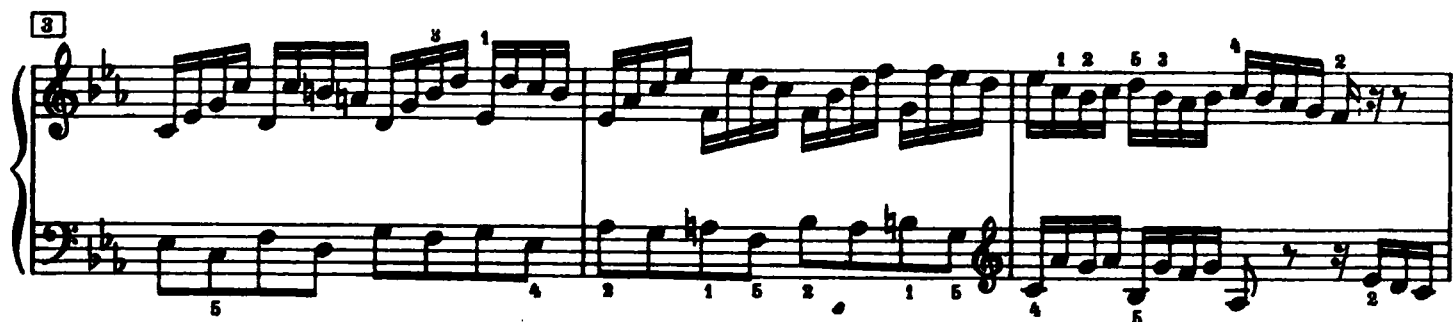
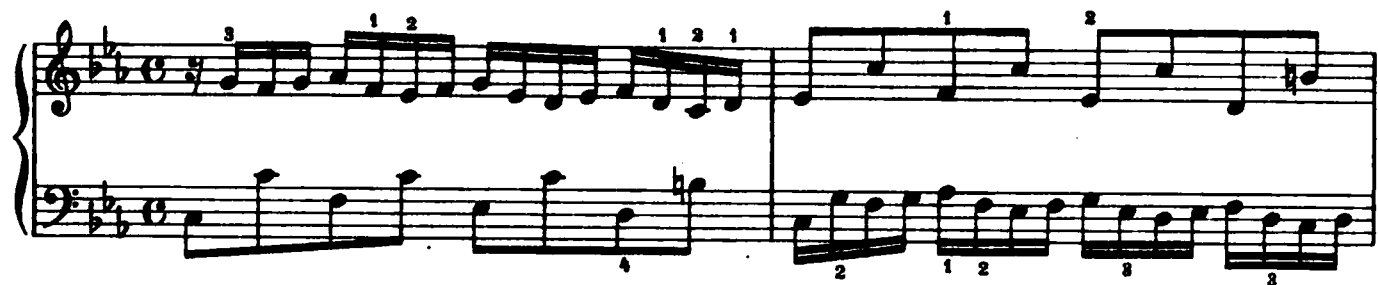


## Praeludium II



13

Measures 13 and 14 of a piano piece. The key signature has two flats (B-flat and E-flat). Measure 13 features a treble clef with eighth-note runs and a bass clef with a triplet of eighth notes. Measure 14 includes a 132-measure repeat sign in the treble and a 4-measure repeat sign in the bass.

15

Measures 15, 16, and 17. Measure 15 has a treble clef with eighth-note runs and a bass clef with eighth notes. Measure 16 includes a 132-measure repeat sign in the treble and a 4-measure repeat sign in the bass. Measure 17 features a treble clef with eighth-note runs and a bass clef with eighth notes.

18

Measures 18 and 19. Measure 18 has a treble clef with eighth-note runs and a bass clef with eighth notes. Measure 19 includes a treble clef with eighth-note runs and a bass clef with eighth notes.

20

Measures 20, 21, and 22. Measure 20 has a treble clef with eighth-note runs and a bass clef with eighth notes. Measure 21 includes a treble clef with eighth-note runs and a bass clef with eighth notes. Measure 22 features a treble clef with eighth-note runs and a bass clef with eighth notes.

23

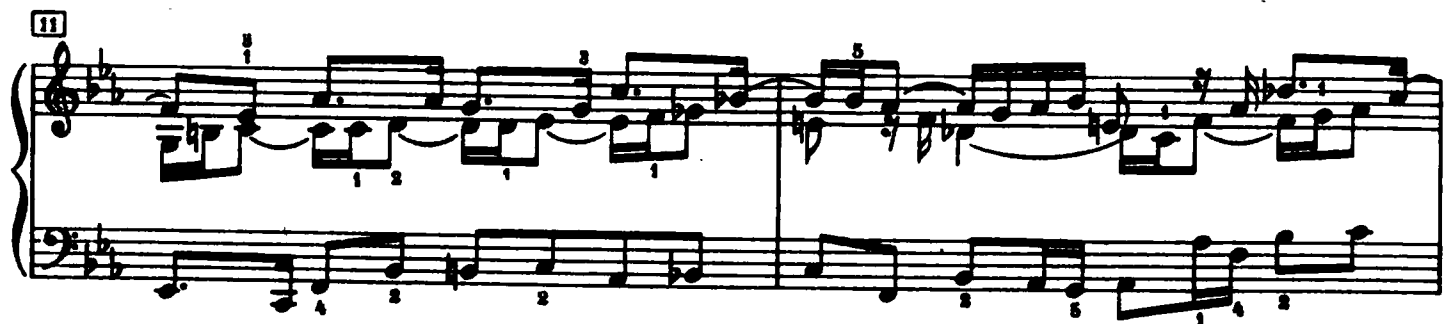
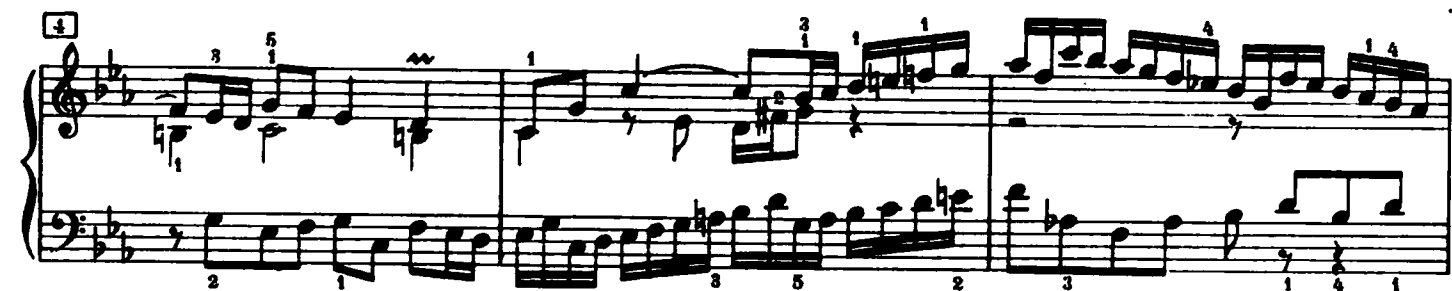
Measures 23, 24, and 25. Measure 23 has a treble clef with eighth-note runs and a bass clef with eighth notes. Measure 24 includes a treble clef with eighth-note runs and a bass clef with eighth notes. Measure 25 features a treble clef with eighth-note runs and a bass clef with eighth notes.

26

Measures 26, 27, and 28. Measure 26 has a treble clef with eighth-note runs and a bass clef with eighth notes. Measure 27 includes a treble clef with eighth-note runs and a bass clef with eighth notes. Measure 28 features a treble clef with eighth-note runs and a bass clef with eighth notes.

## Fuga II

a 4 Voci



13

Measures 13-15 of a piano piece. The key signature has two flats (B-flat and E-flat). Measure 13 features a complex right-hand melody with sixteenth-note runs and a left-hand accompaniment of eighth notes. Measure 14 continues the right-hand melody with a trill and a descending scale. Measure 15 shows a more active left-hand part with eighth-note patterns. Fingering numbers (1-5) are indicated throughout.

16

Measures 16-18. Measure 16 has a right-hand melody with a trill and a left-hand accompaniment of eighth notes. Measure 17 continues the right-hand melody with a trill and a descending scale. Measure 18 shows a more active left-hand part with eighth-note patterns. Fingering numbers (1-5) are indicated throughout.

18

Measures 19-21. Measure 19 features a complex right-hand melody with sixteenth-note runs and a left-hand accompaniment of eighth notes. Measure 20 continues the right-hand melody with a trill and a descending scale. Measure 21 shows a more active left-hand part with eighth-note patterns. Fingering numbers (1-5) are indicated throughout.

21

Measures 22-24. Measure 22 has a right-hand melody with a trill and a left-hand accompaniment of eighth notes. Measure 23 continues the right-hand melody with a trill and a descending scale. Measure 24 shows a more active left-hand part with eighth-note patterns. Fingering numbers (1-5) are indicated throughout.

23

Measures 25-27. Measure 25 features a complex right-hand melody with sixteenth-note runs and a left-hand accompaniment of eighth notes. Measure 26 continues the right-hand melody with a trill and a descending scale. Measure 27 shows a more active left-hand part with eighth-note patterns. Fingering numbers (1-5) are indicated throughout.

26

Measures 28-30. Measure 28 has a right-hand melody with a trill and a left-hand accompaniment of eighth notes. Measure 29 continues the right-hand melody with a trill and a descending scale. Measure 30 shows a more active left-hand part with eighth-note patterns. Fingering numbers (1-5) are indicated throughout.