

Chème varié

suivi d'un Menuet

pour la

GUITARRE

Composé

par



F E R D . S O R .

Op: 3.

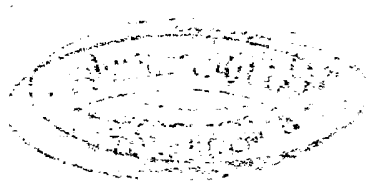
Prix 1 Fr:

Bonn et Cologne

chez N. S I M R O C K .

2288.

1924
919.



Tema. Andante.

F: Sor
Op: 3.

Musical notation for the main theme, consisting of four staves. The first staff begins with a treble clef, a 2/4 time signature, and a key signature of one sharp (F#). The melody is written in the upper voice, with accompaniment in the lower voice. The second staff continues the melody and accompaniment. The third staff features a repeat sign at the beginning. The fourth staff concludes the theme with a double bar line and repeat dots.

Variazione
1.

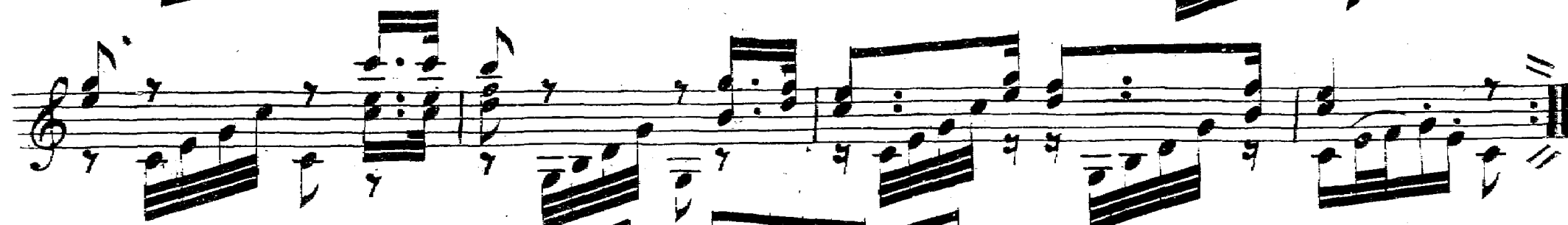
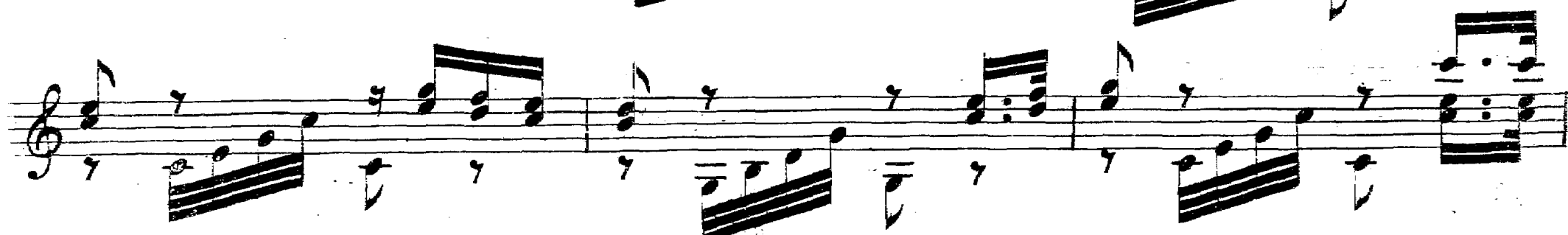
Musical notation for Variation 1, consisting of four staves. The notation continues from the previous section. The first staff of this variation shows a more active melody with many beamed eighth notes. The second staff continues this pattern. The third staff has a repeat sign. The fourth staff ends with a double bar line and repeat dots.

Variazione
2.

Musical notation for Variation 2, consisting of two staves. The notation continues from the previous section. The first staff of this variation shows a more active melody with many beamed eighth notes. The second staff continues this pattern and ends with a double bar line and repeat dots.



Variation
3.



Variazione
5.



Variazione
6.

